

Excellent Integrated System Limited

Stocking Distributor

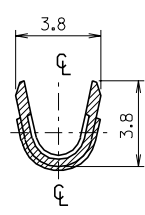
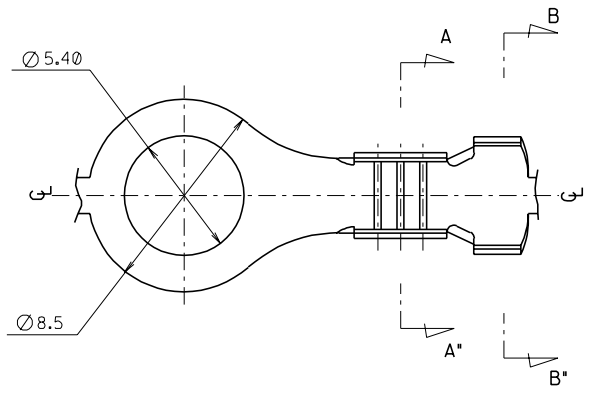
Click to view price, real time Inventory, Delivery & Lifecycle Information:

[Molex Connector Corporation](#)
[0357501210](#)

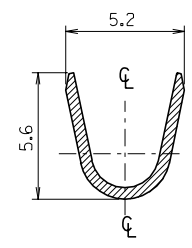
For any questions, you can email us directly:

sales@integrated-circuit.com

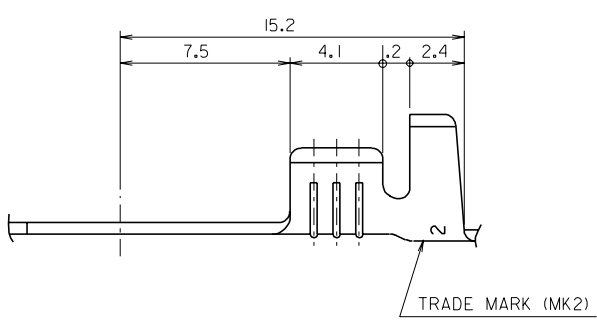
ENG. NO. SD 35750-12*0
EDP NO.
SIMILAR ITEM
PROJECT NO.
DO NOT SCALE DRAWING DIMENSION IN METRIC



SECTION:A-A*



SECTION:B-B*



NOTES

1. MATERIAL: BRASS 0.5 THK'
2. FINISH: 35750-1200: NONE
35750-1210: POST-TIN PLATING
35723-1004: TIN LEAD PLATING
3. RECOMMENDED LENGTH OF WIRE STRIP IS 5.4-6.0

LTR		REVISION RECORD	ECN	DR/CHK	DATE	DIE FEED	APPL FEED	WBDW	IBDW	APP'D BY	SCALE	CAD (6:1)	WIRE RANGE AWG: #18-#14 MM ² :	GENERAL TOLERANCES DIM. : +0.3 ANGLE : +0.2	MOLEX-KOREA CO.,LTD. REVISE ONLY ON CAD SYSTEM	
C		REVISD			92.4.30										TITLE: Ø 5.4 RING TERMINAL	
B		REVISD			91.12.3										IOF I	
A		CAD DRAWING RELEASED			91.11.2					W.Y.YANG					REV C	
8		7		6		5		4		3		2		1		MK-9