

## Excellent Integrated System Limited

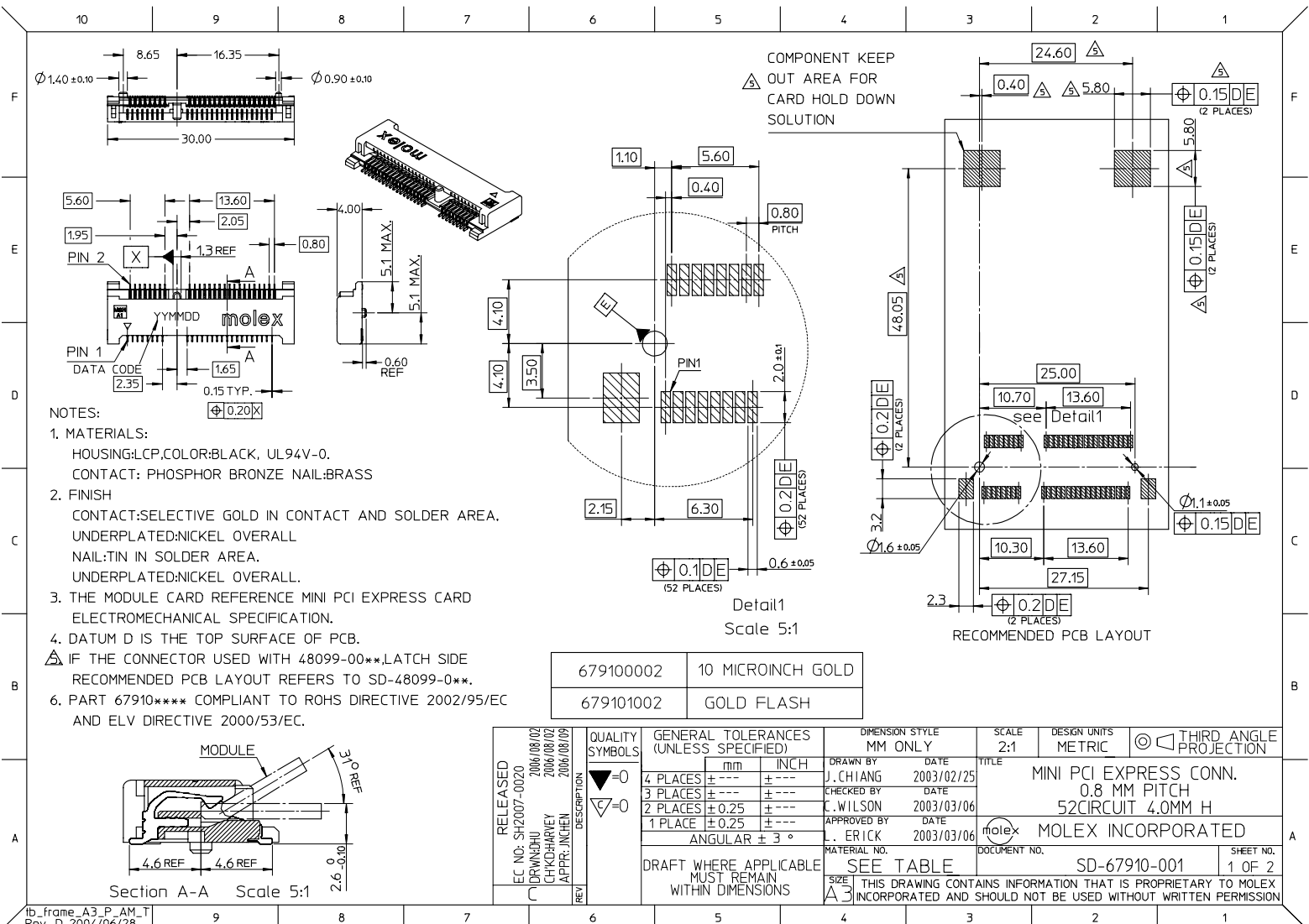
Stocking Distributor

Click to view price, real time Inventory, Delivery & Lifecycle Information:

[Molex Connector Corporation](#)  
[0679100002](#)

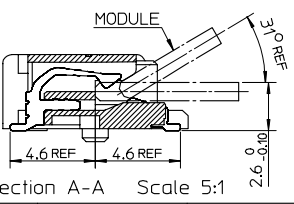
For any questions, you can email us directly:

[sales@integrated-circuit.com](mailto:sales@integrated-circuit.com)



679100002	10 MICROINCH GOLD
679101002	GOLD FLASH

RELEASED EC NO: SH2007-0020 2006/08/02 DRVN:JHJ 2006/08/02 CHKD:RHYEY 2006/08/09 APPR: JHCHEH	QUALITY SYMBOLS ▽=0 ▽=0	GENERAL TOLERANCES (UNLESS SPECIFIED) <table border="1"> <tr> <th></th> <th>mm</th> <th>INCH</th> </tr> <tr> <td>4 PLACES</td> <td>± .15</td> <td>± .006</td> </tr> <tr> <td>3 PLACES</td> <td>± .20</td> <td>± .008</td> </tr> <tr> <td>2 PLACES</td> <td>± 0.25</td> <td>± .010</td> </tr> <tr> <td>1 PLACE</td> <td>± 0.25</td> <td>± .010</td> </tr> </table> ANGULAR ± 3°		mm	INCH	4 PLACES	± .15	± .006	3 PLACES	± .20	± .008	2 PLACES	± 0.25	± .010	1 PLACE	± 0.25	± .010	DIMENSION STYLE MM ONLY	SCALE 2:1	DESIGN UNITS METRIC	THIRD ANGLE PROJECTION
				mm	INCH																
4 PLACES	± .15	± .006																			
3 PLACES	± .20	± .008																			
2 PLACES	± 0.25	± .010																			
1 PLACE	± 0.25	± .010																			
DRAWN BY J. CHIANG 2003/02/25	CHECKED BY C. WILSON 2003/03/06	APPROVED BY A. ERICK 2003/03/06	MATERIAL NO. SEE TABLE	DOCUMENT NO. SD-67910-001	TITLE MINI PCI EXPRESS CONN. 0.8 MM PITCH 52CIRCUIT 4.0MM H	SHEET NO. 1 OF 2															

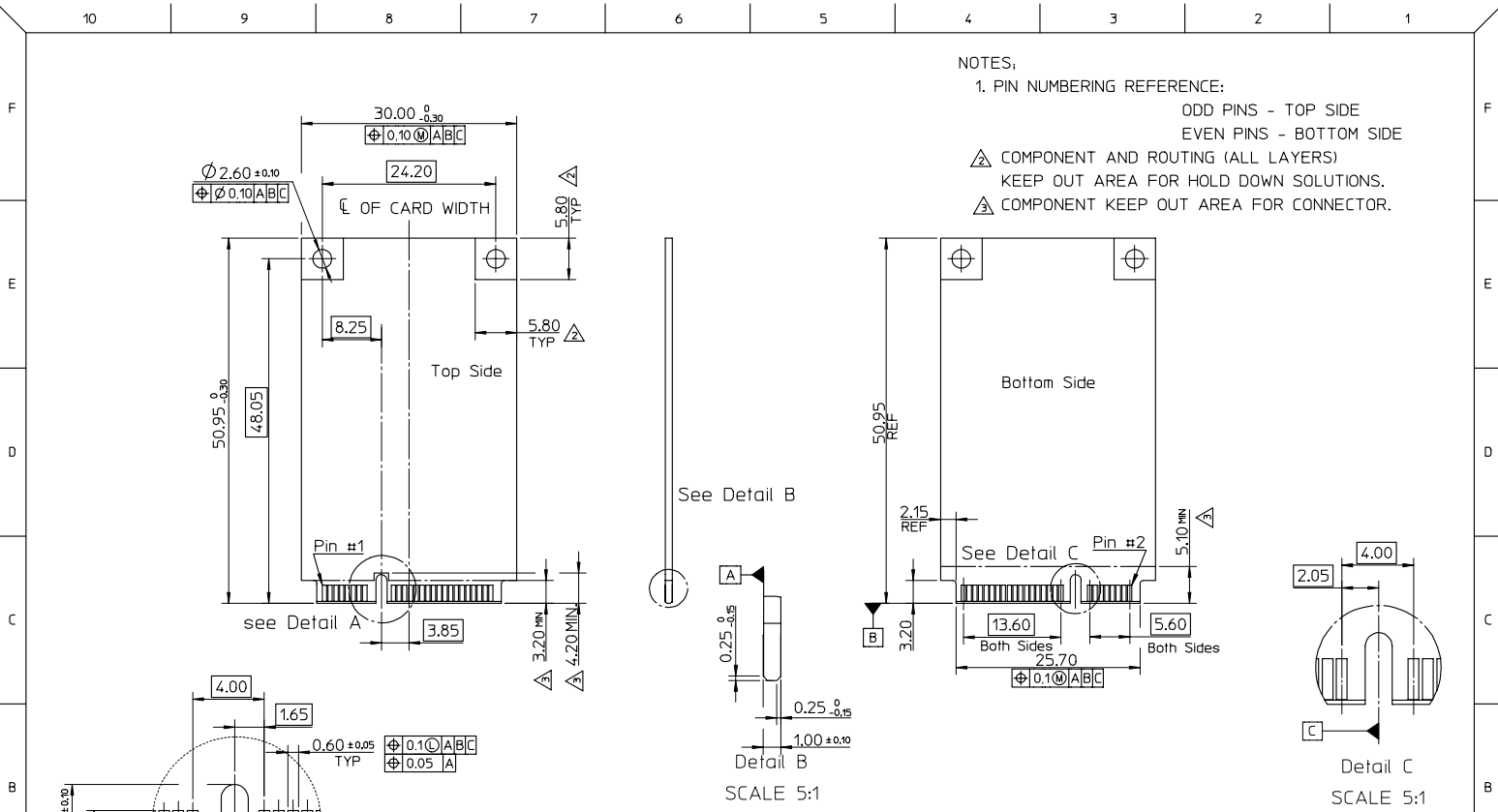


NOTES:

1. PIN NUMBERING REFERENCE:

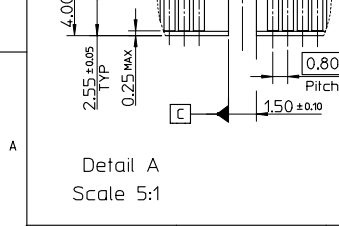
ODD PINS - TOP SIDE  
EVEN PINS - BOTTOM SIDE

- △ COMPONENT AND ROUTING (ALL LAYERS)  
KEEP OUT AREA FOR HOLD DOWN SOLUTIONS.
- △ COMPONENT KEEP OUT AREA FOR CONNECTOR.



Detail B  
SCALE 5:1

Detail C  
SCALE 5:1



Detail A  
Scale 5:1

RELEASED EC NO: SH2007-0020 2006/08/02 DRAWN BY: CHKDHARNEY 2006/08/02 CHKDHARNEY APPR: JICHEN 2006/08/09	QUALITY SYMBOLS	GENERAL TOLERANCES (UNLESS SPECIFIED)		DIMENSION STYLE MM ONLY		SCALE 1:1	DESIGN UNITS METRIC	THIRD ANGLE PROJECTION
	▽=0	4 PLACES	±	---	---	---	---	MINI PCI EXPRESS CONN. 0.8 MM PITCH 52CIRCUIT 4.0MM H <b>MOLEX INCORPORATED</b> DOCUMENT NO. SD-67910-001 SHEET NO. 2 OF 2
	▽=0	3 PLACES	±	---	---	---	---	
		2 PLACES	±	0.25	±	---	---	
	1 PLACE	±	0.25	±	---	---		
		ANGULAR ± 3 °		DRAWN BY: J. CHIANG DATE: 2003/02/25				
		DRAFT WHERE APPLICABLE MUST REMAIN WITHIN DIMENSIONS		CHECKED BY: C. WILSON DATE: 2003/03/06				
				APPROVED BY: A. ERICK DATE: 2003/03/06				
				MATERIAL NO. SEE TABLE				
				SIZE: THIS DRAWING CONTAINS INFORMATION THAT IS PROPRIETARY TO MOLEX INCORPORATED AND SHOULD NOT BE USED WITHOUT WRITTEN PERMISSION				