

Excellent Integrated System Limited

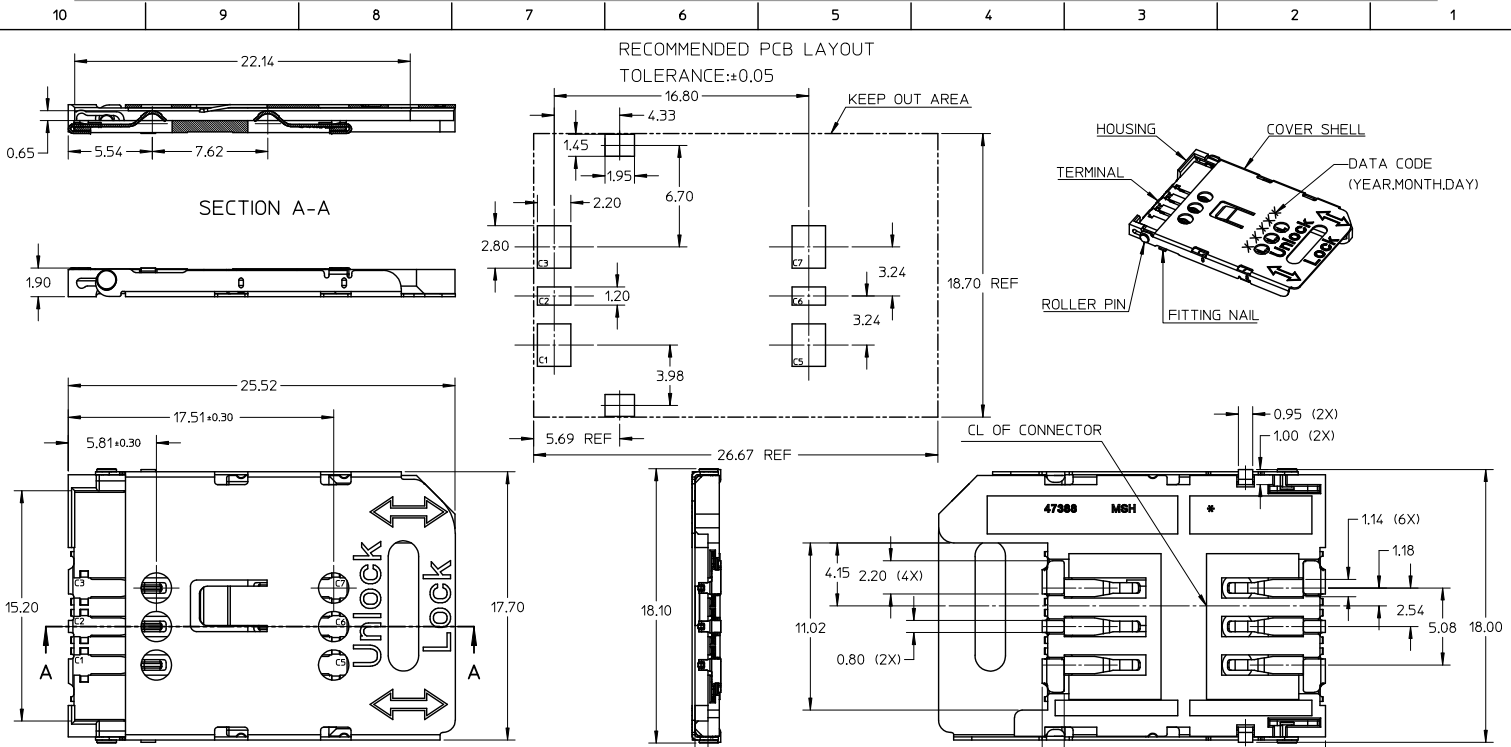
Stocking Distributor

Click to view price, real time Inventory, Delivery & Lifecycle Information:

[Molex Connector Corporation](#)
[0473882001](#)

For any questions, you can email us directly:

sales@integrated-circuit.com



NOTES:
 1.MATERIALS:
 HOUSING: LCP, GLASS FILLED, UL 94V-0, COLOR IS BLACK.
 TERMINAL:PHOSPHOR BRONZE, THICKNESS: 0.15mm.
 COVER SHELL:STAINLESS STEEL,THICKNESS: 0.2mm.
 ROLLER PIN:BRASS
 FITTING NAIL:BRASS THICKNESS 0.2mm
 2.FINISH:
 TERMINAL:
 CONTACT AREA:0.75 MICRON GOLD PLATE OVER 1.27 MICRON MIN NICKEL.
 SOLDER AREA:3.8 MICRON TIN PLATE OVER 1.27 MICRON MIN NICKEL.
 ROLLER PIN:2.54 MICRON MIN NICKEL OVERALL.
 FITTING NAIL:2.54 MICRON MIN TIN OVER 1.27 MICRO NICKEL OVERALL
 3.COPLANARITY:0.1 MAX.AMONG ALL SOLDER TAILS.
 4.PRODUCT SPECIFICATION:PS-47388-201
 5.PACKAGING INFORMATION:PK-47388-001

ADD PCB INFO EC NO: S2012-0371 DRAWN BY: 2011/11/15 CHKD: JIAN2 APPR: KILLIM 2011/11/28 2011/11/28	QUALITY SYMBOLS ▽=0 ▽=0	GENERAL TOLERANCES (UNLESS SPECIFIED)		DIMENSION STYLE MM ONLY		SCALE NTS	DESIGN UNITS METRIC	THIRD ANGLE PROJECTION
		4 PLACES ±--- ±--- 3 PLACES ±--- ±--- 2 PLACES ±0.25 ±--- 1 PLACE ±--- ±--- ANGULAR ± 1°	DRAWN BY: YWANG DATE: 2007/05/28 CHECKED BY: XIXU DATE: 2007/05/28 APPROVED BY: JNCHEN DATE: 2007/05/28	TITLE 1.90MM SIM CARD READER CONNECTOR		MOLEX INCORPORATED		DOCUMENT NO. SD-47388-201
DRAFT WHERE APPLICABLE MUST REMAIN WITHIN DIMENSIONS		MATERIAL NO. 473882001		THIS DRAWING CONTAINS INFORMATION THAT IS PROPRIETARY TO MOLEX INCORPORATED AND SHOULD NOT BE USED WITHOUT WRITTEN PERMISSION				