

## Excellent Integrated System Limited

Stocking Distributor

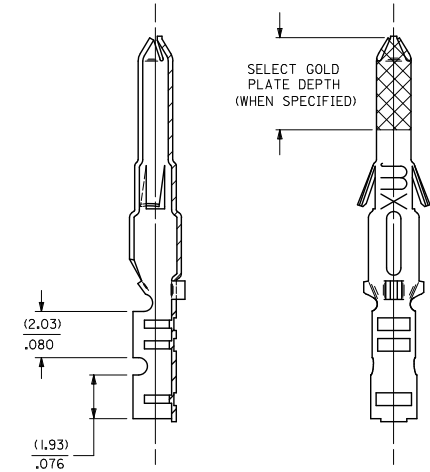
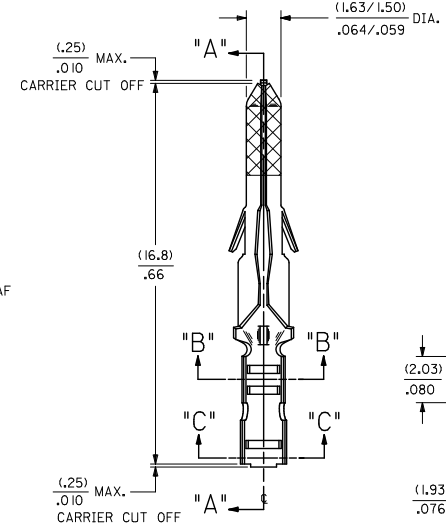
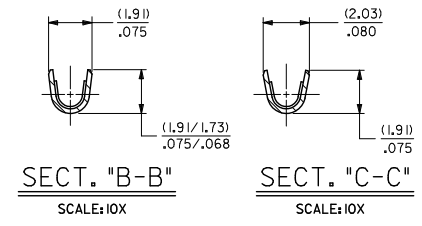
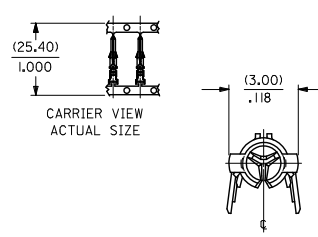
Click to view price, real time Inventory, Delivery & Lifecycle Information:

[Molex Connector Corporation](#)  
[0002062131](#)

For any questions, you can email us directly:

[sales@integrated-circuit.com](mailto:sales@integrated-circuit.com)

PART NO.	ENG. NO.	
02-06-2131	1854-(90)I	
02-06-2132	1854-(90)DL	
02-06-2134	1854-(90)I	OBSOLETE
02-06-6137	1854-(59)I	
02-06-6136	1854-(59)DL	
02-06-6138	1854-(56)I	
02-06-6139	1854-(56)DL	
02-06-6130	1854-(55)I	
02-06-6135	1854-(55)DL	
02-06-6143	1854-(228)	
02-06-6144	1854-(228)L	
02-06-6145	1854-(603)I	OBSOLETE



SECT. "A-A"

**LEGEND**

1854-(\*\*\*\*)\*

- P=PREPLATE
- BLANK=POSTPLATE
- FINISH CODE
- FORM
- BLANK=CHAIN
- I=CHAIN WITH INTERLEAF
- PAPER ON REEL.
- L=LOOSE

- NOTES:
- MATERIAL: BRASS
  - FINISHES:
    - 901 HOT TIN DIP (.00051)/.000020 MIN.
    - 228 SELECT GOLD PLATE (.00075)/.000030 MIN. IN CONTACT AREA, SELECT TIN (.00250)/.000100 MIN. IN CRIMP AREA OVER (.00125)/.000050 MIN. NICKEL OVERALL, WITH .000010/(0.00025) MAX. SELECT GOLD FLASH IN AREA INDICATED.
    - 561 SELECT GOLD PLATE (.00076)/.000030 MIN. IN CONTACT AREA, (.00127)/.000050 MIN. NICKEL OVERALL.
    - 591 SELECT GOLD PLATE (.00127)/.000050 MIN. IN CONTACT AREA, OVER (.00127)/.000050 MIN. NICKEL OVERALL WITH (.00025)/.000010 MAX. GOLD FLASH OVERALL.
    - 550 SELECT GOLD PLATE (.00038)/.000015 MIN. IN CONTACT AREA, OVER (.00076)/.000030 MIN. NICKEL OVERALL WITH (.00025)/.000010 MAX. GOLD FLASH OVERALL.
  - PRODUCT SPECIFICATION: PS-02-0-6
  - PACKAGE INFORMATION: NOT AVAILABLE
  - TERMINAL FOR USE WITH (157)/.062 DIA. SERIES HOUSINGS AND WILL ACCEPT 24 THRU 30 AWG WIRE WITH (102/2.29)/.040/.090 INSULATION DIAMETER.

REDRAWN EC NO: UCP2011-0053 2010/07/08 DRAWN: AELHAG 2010/07/08 CHKD: J.BELL 2010/08/06 APPR: F.SMITH 2010/08/06 DESCRIPTION AQ REV	QUALITY SYMBOLS	GENERAL TOLERANCES (UNLESS SPECIFIED)	DIMENSION STYLE	SCALE	DESIGN UNITS	THIRD ANGLE PROJECTION															
		<table border="1"> <thead> <tr> <th></th> <th>mm</th> <th>INCH</th> </tr> </thead> <tbody> <tr> <td>4 PLACES</td> <td>± .010</td> <td>± .004</td> </tr> <tr> <td>3 PLACES</td> <td>± .015</td> <td>± .006</td> </tr> <tr> <td>2 PLACES</td> <td>± 0.25</td> <td>± .010</td> </tr> <tr> <td>1 PLACE</td> <td>± 0.35</td> <td>± .014</td> </tr> </tbody> </table> ANGULAR ± 1/2°		mm	INCH	4 PLACES	± .010	± .004	3 PLACES	± .015	± .006	2 PLACES	± 0.25	± .010	1 PLACE	± 0.35	± .014	IN/MM DRAWN BY: AELHAG DATE: 2010/07/08 CHECKED BY: J.BELL DATE: 2010/07/08 APPROVED BY: F.SMITH DATE: 2010/08/06	8:1	INCH	CRIMP TERMINAL, MALE .062 DIA. FOR 24-30 AWG WIRE
		mm	INCH																		
4 PLACES	± .010	± .004																			
3 PLACES	± .015	± .006																			
2 PLACES	± 0.25	± .010																			
1 PLACE	± 0.35	± .014																			
	DRAFT WHERE APPLICABLE MUST REMAIN WITHIN DIMENSIONS	MATERIAL NO. SEE CHART	MOLEX INCORPORATED DOCUMENT NO. SD-1854-*			SHEET NO. 1 OF 1															