

## Excellent Integrated System Limited

Stocking Distributor

Click to view price, real time Inventory, Delivery & Lifecycle Information:

[Molex Connector Corporation](#)

[0191150032](#)

For any questions, you can email us directly:

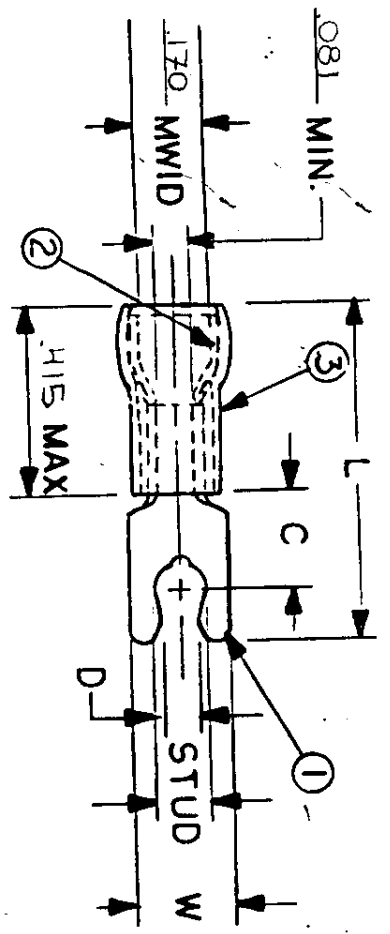
[sales@integrated-circuit.com](mailto:sales@integrated-circuit.com)



FILE NO. BB-CD-805-03

**NOTES:**

- ① MAT'L: COPPER, STOCK TKN .031 <sup>±.001</sup>  
 PLATING: ELECTRO-TIN (.0003 MIN.)
- ② TIN-PLATED BRASS FUNNEL FERRULE
- ③ NYLON INSULATION (BLUE)
- ④ UL LISTING #E3224H  
 CSA LISTING 18689



MWID = MAX. WIRE INSULATION DIA.

WIRE SIZE: 16-14 AWG.  
 1.0-2.5 MM<sup>2</sup>

PART NUMBER	"W" ±.010	"C" MIN.	"L" MAX.	"D" ±.005	AVAILABLE STUD SIZES	DIMENSIONAL TOLERANCES UNLESS OTHERWISE SPECIFIED		REFERENCE	SCALE:	NTS	DATE	TITLE:	DWG. NO.	A	CUSTOMER DWG.
						DEC. ±	ANG. ±								
BB-8716	.310	.261	.886	.139	08 (.173 <sup>±.005</sup> )						4-5-95	SNAP SPADE SHORT TONGUE TERMINAL. AVIKRIP-300 SERIES			
BB-8717	.330	.261	.934	.156	10 (.198 <sup>±.005</sup> )										

