



Distributor of Molex Connector Corporation: Excellent Integrated System Limited

Datasheet of 0191150025 - CONN SNAP SPADE #6 14-16AWG

Contact us: sales@integrated-circuit.com Website: www.integrated-circuit.com

Excellent Integrated System Limited

Stocking Distributor

Click to view price, real time Inventory, Delivery & Lifecycle Information:

[Molex Connector Corporation](#)

[0191150025](#)

For any questions, you can email us directly:

sales@integrated-circuit.com



FILE NO. BB-CD-805-02

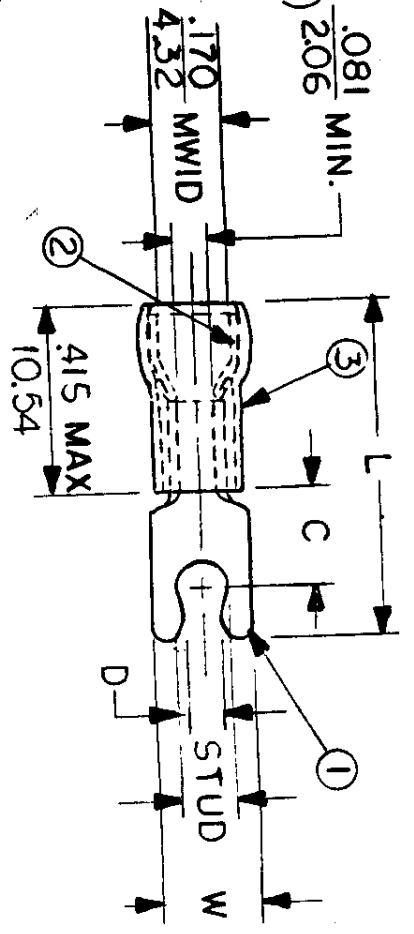
- NOTES:**
- ① MAT'L: COPPER (STOCK TKN. $\frac{.031}{.79}$)
 - ② PLATING: ELECTRO TIN (.0003 MIN)
 - ③ TIN-PLATED BRASS FUNNEL FERRULE
 - ④ NYLON INSULATION (COLOR CODED BLUE) $\frac{.081}{2.06}$ MIN.

STUD SIZES: ($\pm .005$)

- 02 = .094
- 04 = .119
- 06 = .146
- 08 = .173
- 10 = .198
- 14 = .265
- 56 = .328
- 38 = .390

"UL" LISTING # E32244
 "CSA" LISTING # 18689

WIRE SIZE: 16 - 14 AWG²
 10 - 2.5 MM²



ALL DIMENSIONS = INCHES (MWID) = DENOTES MAXIMUM WIRE INSULATION DIAMETER

PART NUMBER	"W" $\pm .010$	"C" MIN.	"L" MAX.	"D" $\pm .005$	AVAILABLE STUD SIZES	DIMENSIONAL TOLERANCES UNLESS OTHERWISE SPECIFIED		REFERENCE	SCALE: NTS	DATE	TITLE:	DWG. NO.
						DEC.	ANG.					
BB-8707	$\frac{.250}{6.35}$	$\frac{.230}{5.84}$	$\frac{.825}{20.96}$	$\frac{1.05}{2.67}$	05 ($\frac{.127 \pm .005}{3.23}$)					11-9-84	SNAP SPADE SHORT TONGUE TERMINAL	A
BB-8707-	$\frac{.250}{6.35}$	$\frac{.230}{5.84}$	$\frac{.825}{20.96}$	$\frac{1.14}{2.90}$	06					11-29-84	AVIKRIMP 800-SERIES	CUSTOMER DWG

