



**Distributor of Molex Connector Corporation: Excellent Integrated System Limited**  
Datasheet of 0357253710 - Connector Quick Connect Receptacle 14-18 AWG 0.250"  
(6.35mm) Crimp

Contact us: [sales@integrated-circuit.com](mailto:sales@integrated-circuit.com) Website: [www.integrated-circuit.com](http://www.integrated-circuit.com)

---

## **Excellent Integrated System Limited**

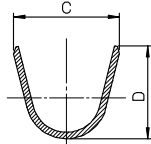
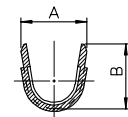
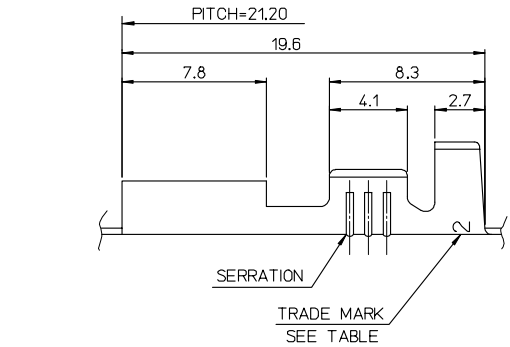
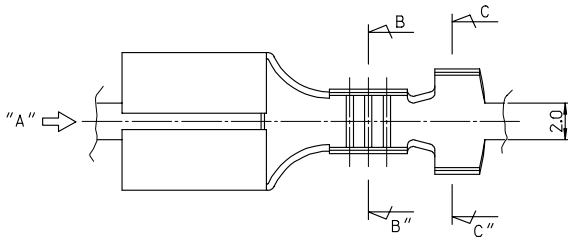
Stocking Distributor

Click to view price, real time Inventory, Delivery & Lifecycle Information:

[Molex Connector Corporation](#)  
[0357253710](#)

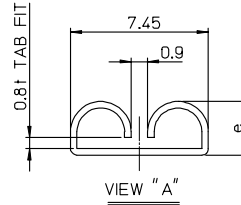
For any questions, you can email us directly:  
[sales@integrated-circuit.com](mailto:sales@integrated-circuit.com)

Contact us: [sales@integrated-circuit.com](mailto:sales@integrated-circuit.com) Website: [www.integrated-circuit.com](http://www.integrated-circuit.com)



**NOTES**

1. MATERIAL : BRASS, 0.35mm THICKNESS
2. RECOMMENDED LENGTH OF WIRE STRIP IS 5.2-5.8 mm
3. FINISH, TENSION : SEE TABLE



ENG. NO.	a	b	c	d	e	WIRE RANGE	PLATED	TRADE MARK	TENSION
35725-3600	5.2	4.6	6.3	6.3		AWG #14-#12			
35725-3700	3.5	3.5	5.7	5.0	2.9	AWG #18-#14	(UNPLATED)	MK2	STANDARD TENSION
35725-3800	2.85	2.9	3.8	3.8		AWG #22-#20			
35725-3610	5.2	4.6	6.3	6.3		AWG #14-#12	(POST-TIN PLATING)	MK2	STANDARD TENSION
35725-3710	3.5	3.5	5.7	5.0	2.9	AWG #18-#14			
35725-3810	2.85	2.9	3.8	3.8		AWG #22-#20			
35725-3601	5.2	4.6	6.3	6.3		AWG #14-#12	(UNPLATED)	L MK2	LOW TENSION
35725-3701	3.5	3.5	5.7	5.0	2.95	AWG #18-#14			
35725-3801	2.85	2.9	3.8	3.8		AWG #22-#20			

REVISED EC NO: KOR2008-0030 DRAWN: H.PARK01 2007/09/10 CHKDWT: JANG 2007/09/10 APPR: YUNSIKIM 2007/09/10	QUALITY SYMBOLS	GENERAL TOLERANCES (UNLESS SPECIFIED) <table border="1"> <thead> <tr> <th></th> <th>mm</th> <th>INCH</th> </tr> </thead> <tbody> <tr> <td>4 PLACES</td> <td>± 0.3</td> <td>± 0.012</td> </tr> <tr> <td>3 PLACES</td> <td>± 0.4</td> <td>± 0.016</td> </tr> <tr> <td>2 PLACES</td> <td>± 0.5</td> <td>± 0.020</td> </tr> <tr> <td>1 PLACE</td> <td>± 0.6</td> <td>± 0.024</td> </tr> </tbody> </table> ANGULAR ± 1°		mm	INCH	4 PLACES	± 0.3	± 0.012	3 PLACES	± 0.4	± 0.016	2 PLACES	± 0.5	± 0.020	1 PLACE	± 0.6	± 0.024	DIMENSION STYLE MM ONLY	SCALE 5:1	DESIGN UNITS METRIC	THIRD ANGLE PROJECTION
			mm	INCH																	
4 PLACES	± 0.3	± 0.012																			
3 PLACES	± 0.4	± 0.016																			
2 PLACES	± 0.5	± 0.020																			
1 PLACE	± 0.6	± 0.024																			
DESCRIPTION A	DRAFT WHERE APPLICABLE MUST REMAIN WITHIN DIMENSIONS	DRAWN BY JS. KANG	DATE 93/04/27	TITLE .250 SLIP-ON RECEPTACLE TERMINAL																	
		CHECKED BY BK. CHOI	DATE 93/04/27	MOLEX INCORPORATED																	
		APPROVED BY CW. LEE	DATE 93/04/27	MATERIAL NO. SEE TABLE	DOCUMENT NO. SD-35725-3**0	SHEET NO. 1 OF 01															
THIS DRAWING CONTAINS INFORMATION THAT IS PROPRIETARY TO MOLEX INCORPORATED AND SHOULD NOT BE USED WITHOUT WRITTEN PERMISSION																					