

Excellent Integrated System Limited

Stocking Distributor

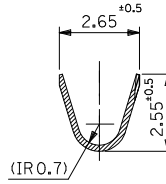
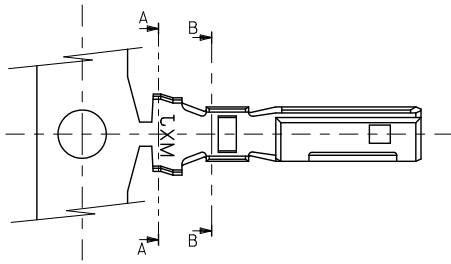
Click to view price, real time Inventory, Delivery & Lifecycle Information:

[Molex Connector Corporation](#)
[0500398000](#)

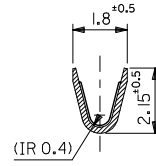
For any questions, you can email us directly:

sales@integrated-circuit.com

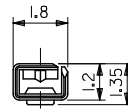
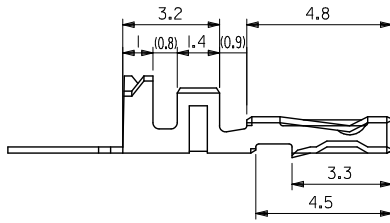
10 9 8 7 6 5 4 3 2 1



断面 A-A
SECT.A-A

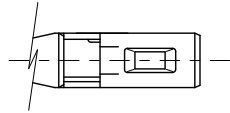


断面 B-B
SECT.B-B



注記
NOTICE

1. 適合ハウジングアセンブリ :
52117-02**
52117-03**
52117-04**
- 1.APPLICABLE HOUSING ASSEMBLY:
52117-02**
52117-03**
52117-04**
2. 嵌合相手 : 50038-8*00
- 2.MATE: 50038-8*00



50039-8100	バネ状 LOOSE
50039-8000	溝鎖状 CHAIN
MATERIAL NO.	形状 FORM

材料 MATERIAL	リン青銅 錫メッキ(+0.2) PHOSPHOR BRONZE TIN PLATING(+0.2)
適用電線範囲 WIRE RANGE	AVS-0.3/0.3F AVSS-0.5/0.5F AVSS-0.3/0.3F CAVS-0.5 CAVS-0.3 CAVS-0.5 ISO-0.5 AWG #22/#20
被覆外径 INS. RANGE	φ1.4-1.9

REVISED EC NO: JTR2012-0084 2012/02/29 DRAWN: SANDO 2012/03/02 CHKD: SANDO 2012/03/16 APPR: MIYAMOTO DESCRIPTION D1	GENERAL TOLERANCES (UNLESS SPECIFIED)		DIMENSION STYLE MM ONLY	SCALE 8:1	DESIGN UNITS METRIC	THIRD ANGLE PROJECTION
	10 UNDER	± 0.2	DRAWN BY M. ASAOKA	DATE 1996/06/10	TITLE 2.5 WATERPROOF CONN CRIMP REC	
	10 OVER 30 UNDER	± 0.25	CHECKED BY M. SAKANO	DATE 1996/06/10	MOLEX INCORPORATED	
	30 OVER	± 0.3	APPROVED BY MENOMOTO	DATE 1996/06/10	MATERIAL NO.	DOCUMENT NO. SD-50039-001
ANGULAR ±3 °			SEE CHART		THIS DRAWING CONTAINS INFORMATION THAT IS PROPRIETARY TO MOLEX INCORPORATED AND SHOULD NOT BE USED WITHOUT WRITTEN PERMISSION	
DRAFT WHERE APPLICABLE MUST REMAIN WITHIN DIMENSIONS						