

Excellent Integrated System Limited

Stocking Distributor

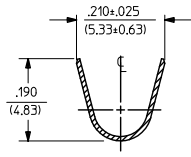
Click to view price, real time Inventory, Delivery & Lifecycle Information:

[Molex Connector Corporation](#)
[0002095100](#)

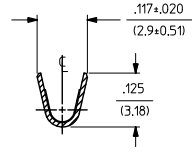
For any questions, you can email us directly:

sales@integrated-circuit.com

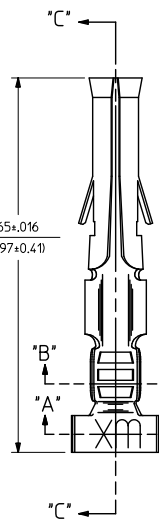
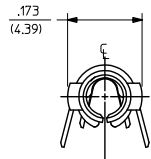
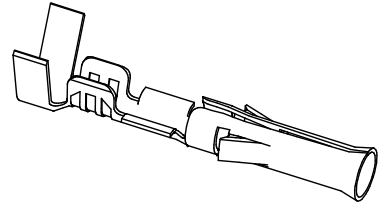
PART NO.	ENG. NO.	INTERLEAF PAPER OPTION
02-09-1104	1189-A(P9011L)	
02-09-1102	1189-A(P901)	
02-09-5111	1189-A(P591L)	
02-09-5102	1189-A(P591)	
02-09-5106	1189-A(P550L)	
02-09-5100	1189-A(P550)	
02-09-6102	1189-A(P901-I)	YES



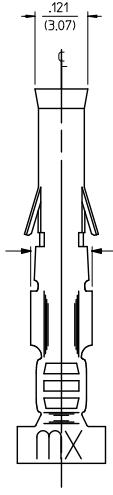
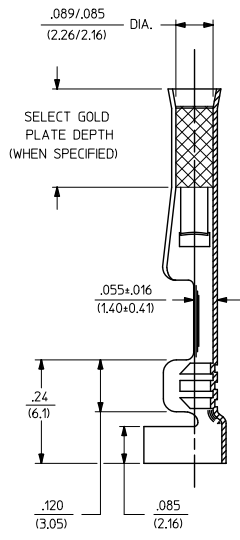
SECT. "A-A"



SECT. "B-B"



SECT. "C-C"



LEGEND

1189-A(****)*-*

FORM: BLANK=CHAIN, L=LOOSE

FINISH CODE: P=PREPLATE, BLANK=POSTPLATE

INTERLEAF PAPER OPTION: BLANK: INTERLEAF PAPER ON FIRST FEW WRAPS ONLY, I: INTERLEAF PAPER THROUGH OUT REEL.

- NOTES:
- MATERIAL: CARTRIDGE BRASS, ALLOY #C26000, .010/(0.25) THICK
 - FINISH CODES:
 - 901 HOT TIN DIP .000020/(0.0005) MIN.
 - 591 SELECT GOLD PLATE .000050/(0.00127) MIN. IN CONTACT AREA, OVER .000050/(0.00127) MIN. NICKEL OVERALL WITH .000010/(0.00025) MAX. GOLD FLASH OVERALL.
 - 550 SELECT GOLD PLATE .000015/(0.00038) MIN. IN CONTACT AREA, OVER .000030/(0.00076) MIN. NICKEL OVERALL WITH .000010/(0.00025) MAX. GOLD FLASH OVERALL.
 - *THE PRIMARY SHIPPING CARTON WILL BE LABELED, *COMPLIANT TO RoHS DIRECTIVE 2002/95/EC AND ELV ANNEX OF DIRECTIVE 2000/53/EC*, AND CARTONS WITHOUT THIS LABEL MAY CONTAIN PRODUCT WITH TIN-LEAD.
 - THIS PART CONFORMS TO PROD. SPEC. 02-09.
 - PACKAGING INFORMATION: NOT AVAILABLE
 - TERMINAL FOR USE WITH .093/(2.36) SERIES HOUSINGS AND WILL ACCEPT 14 THRU 20 AWG WIRE.
 - INSERTION FORCE: 3.5 LBS. MAX. WHEN TERMINAL IS INSERTED INTO AN .093 SERIES HOUSING.
 - RETENTION: 20 LBS. MIN. FROM HOUSING.



ADD P/N 02-09-6102 EC NO: UCP2012-2714 DRAWN: HMG 2017/02/28 CHKD: JELL 2017/02/28 APPR: SMTH 2017/04/25	QUALITY SYMBOLS ▽=0 ▽=0	GENERAL TOLERANCES (UNLESS SPECIFIED)		DIMENSION STYLE IN/MM		SCALE 6:1	DESIGN UNITS INCH	THIRD ANGLE PROJECTION		
		4 PLACES ± --- ± ---	3 PLACES ± --- ± .010	2 PLACES ± 0.25 ± .014	1 PLACE ± 0.35 ± ---	ANGULAR ± 1/2°	DRAWN BY GEP DATE 1987/10/26	CHECKED BY RW DATE 1987/10/26	APPROVED BY RAS DATE 1987/10/26	
		DRAFT WHERE APPLICABLE MUST REMAIN WITHIN DIMENSIONS			SEE CHART	TITLE CRIMP TERMINAL, FEMALE, .093/(2.36) DIA. 14-20 AWG		MOLEX INCORPORATED		SHEET NO. 1 OF 1
		MATERIAL NO. SEE CHART			DOCUMENT NO. SD-1189-*		THIS DRAWING CONTAINS INFORMATION THAT IS PROPRIETARY TO MOLEX INCORPORATED AND SHOULD NOT BE USED WITHOUT WRITTEN PERMISSION			