

Excellent Integrated System Limited

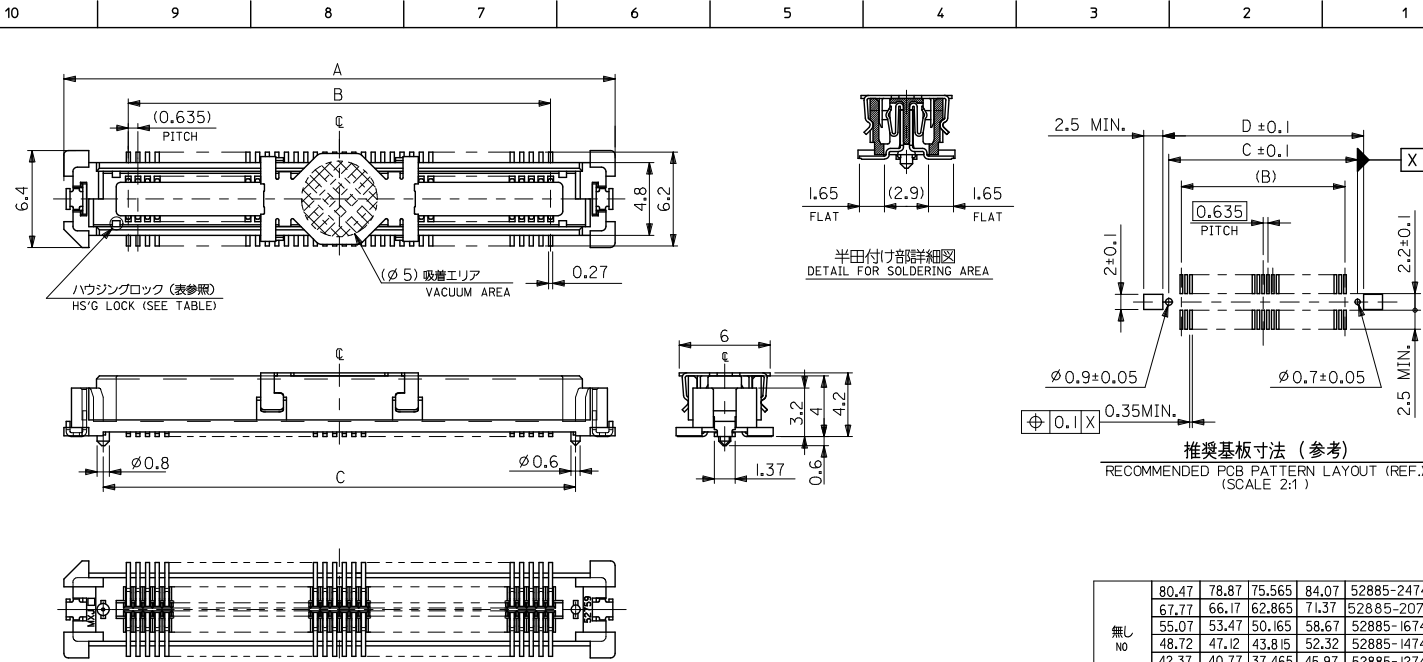
Stocking Distributor

Click to view price, real time Inventory, Delivery & Lifecycle Information:

[Molex Connector Corporation](#)
[0528850374](#)

For any questions, you can email us directly:

sales@integrated-circuit.com



注) NOTES

1. 材質 MATERIAL
 ハウジング: ガラス入りULCP, 白色, UL94V-0
 HOUSING: G.F.LCP, WHITE, UL94V-0
 ターミナル: 銅合金 (t = 0.2)
 TERMINAL: COPPER ALLOY
 吸着カバー: ステンレス (t = 0.2)
 VACUUM COVER: STAINLESS STEEL
 補強金具: 銅合金 (t = 0.25)
 FITTING NAIL: COPPER ALLOY

2. メッキ仕様 PLATING
 ターミナル: 接点部: 金メッキ 0.25 マイクロメートル以上
 CONTACT AREA: GOLD 0.25 MICROMETER MINIMUM
 半田付け部: 錫メッキ 1.0 マイクロメートル以上
 SOLDER TAIL AREA: TIN 1.0 MICROMETER MINIMUM
 下地メッキ: ニッケルメッキ 1.5 マイクロメートル以上
 UNDER-PLATING: NICKEL 1.5 MICROMETER MINIMUM
 補強金具: 錫メッキ 1.0 マイクロメートル以上
 FITTING NAIL: TIN 1.0 MICROMETER MINIMUM
 下地メッキ: ニッケルメッキ 1.0 マイクロメートル以上
 UNDER-PLATING: NICKEL 1.0 MICROMETER MINIMUM

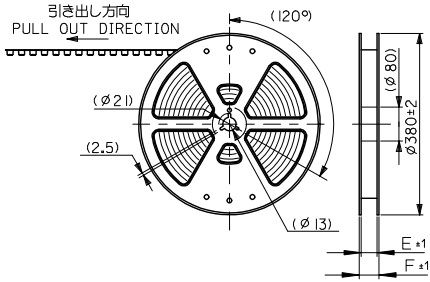
3. テールのバラツキ寸法 TAIL COPLANARITY
 240種以下のテール平坦度は0.1MAX.,
 240種以上のテール平坦度は0.12MAX.とする。
 TAILS COPLANARITY TO BE 0.1MAX.
 IN 240 CIRCUITS, TAILS COPLANARITY TO BE 0.12MAX.

4. エンボス対応洗いの種類については、SD-52885-004を参照下さい。
 FOR THE EMBOSSED PACKAGE PRODUCTS, SEE SD-52885-004.

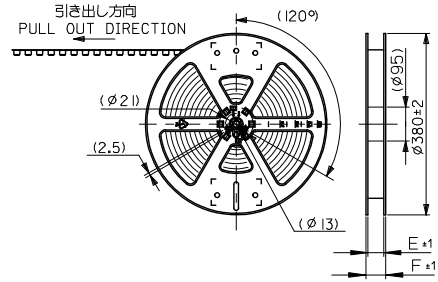
無し NO	80.47	78.87	75.565	84.07	52885-2474	240
	67.77	66.17	62.865	71.37	52885-2074	200
	55.07	53.47	50.165	58.67	52885-1674	160
	48.72	47.12	43.815	52.32	52885-1474	140
	42.37	40.77	37.465	45.97	52885-1274	120
	36.02	34.42	31.115	39.62	52885-1074	100
	32.85	31.25	27.94	36.45		90
	29.67	28.07	24.765	33.27		80
	26.5	24.9	21.59	30.1		70
	23.32	21.72	18.415	26.92		60
有り YES	20.15	18.55	15.24	23.75		50
	16.97	15.37	12.065	20.57		40
	13.8	12.2	8.89	17.4		30
	10.62	9.02	5.715	14.22		20
ハウジングロック HSG LOCK	D	C	B	A	エンボス梱包 EMBOSSED PACKAGING	種数 CKT. NO.
CONNECTORS SERIES No.					52885-72	

REVISED EC NO. J2010-2458 DRAWN: KAIHO 2010/06/04 CHKDK: TOJO 2010/06/10 APPR: SASAO 2010/06/11	GENERAL TOLERANCES (UNLESS SPECIFIED)		DIMENSION STYLE MM ONLY		SCALE ---	DESIGN UNITS METRIC	THIRD ANGLE PROJECTION
	10 UNDER	±0.2	DRAWN BY M. NAGATA	DATE 2004/02/25	TITLE 0.635 PITCH B TO B S/T REC. HSG ASSY -LEAD FREE-		
	10 OVER 30 UNDER	±0.25	CHECKED BY K. TOJO	DATE 2004/02/25	MOLEX INCORPORATED		
	30 OVER	±0.3	APPROVED BY M. SASAO	DATE 2004/02/25	DOCUMENT NO. SD-52885-003		
	ANGULAR ±3°		MATERIAL NO.		SHEET NO. 1 OF 1		
DRAFT WHERE APPLICABLE MUST REMAIN WITHIN DIMENSIONS		SEE CHART		THIS DRAWING CONTAINS INFORMATION THAT IS PROPRIETARY TO MOLEX INCORPORATED AND SHOULD NOT BE USED WITHOUT WRITTEN PERMISSION			

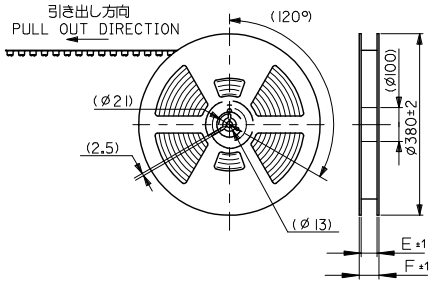
10 9 8 7 6 5 4 3 2 1



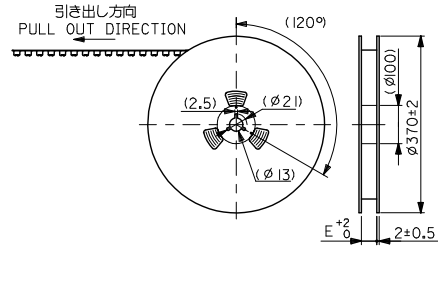
キャリアテープ幅: 24mm~56mm
CARRIER TAPE WIDTH: 24mm~56mm



キャリアテープ幅: 72mm
CARRIER TAPE WIDTH: 72mm



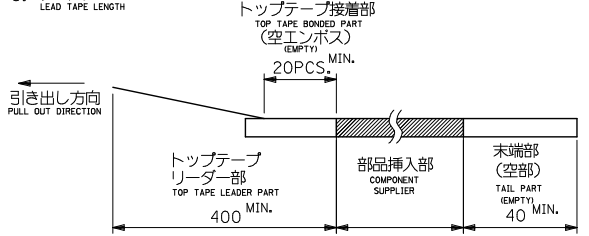
キャリアテープ幅: 88mm
CARRIER TAPE WIDTH: 88mm



キャリアテープ幅: 104mm
CARRIER TAPE WIDTH: 104mm

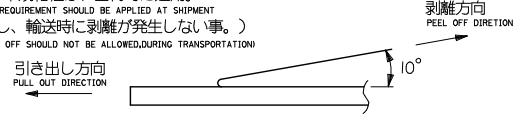
注)
NOTES

- 製品番号 52885-***72 の詳細寸法については SD-52885-003 を参照下さい。
IN THE PACKAGE, PART NO. 52885-***72 DETAILED DIMENSIONS, SEE SD-52885-003
- 梱包数量: 1000個/リール
NUMBER OF CONNECTORS: 1000 PCS/REEL
- リードテープ長さ
LEAD TAPE LENGTH



4. トップテープの剥離強度 (剥離方向は下図参照)

PEELING OFF FORCE OF TOP TAPE (PEELING DIRECTION AS SHOWN IN FOLLOWING FIG.)
0.1~0.3N {10~130gf}
尚、本規格値は、出荷時に適用。
(但し、輸送時に剥離が発生しない事。)
(PEEL OFF SHOULD NOT BE ALLOWED, DURING TRANSPORTATION)



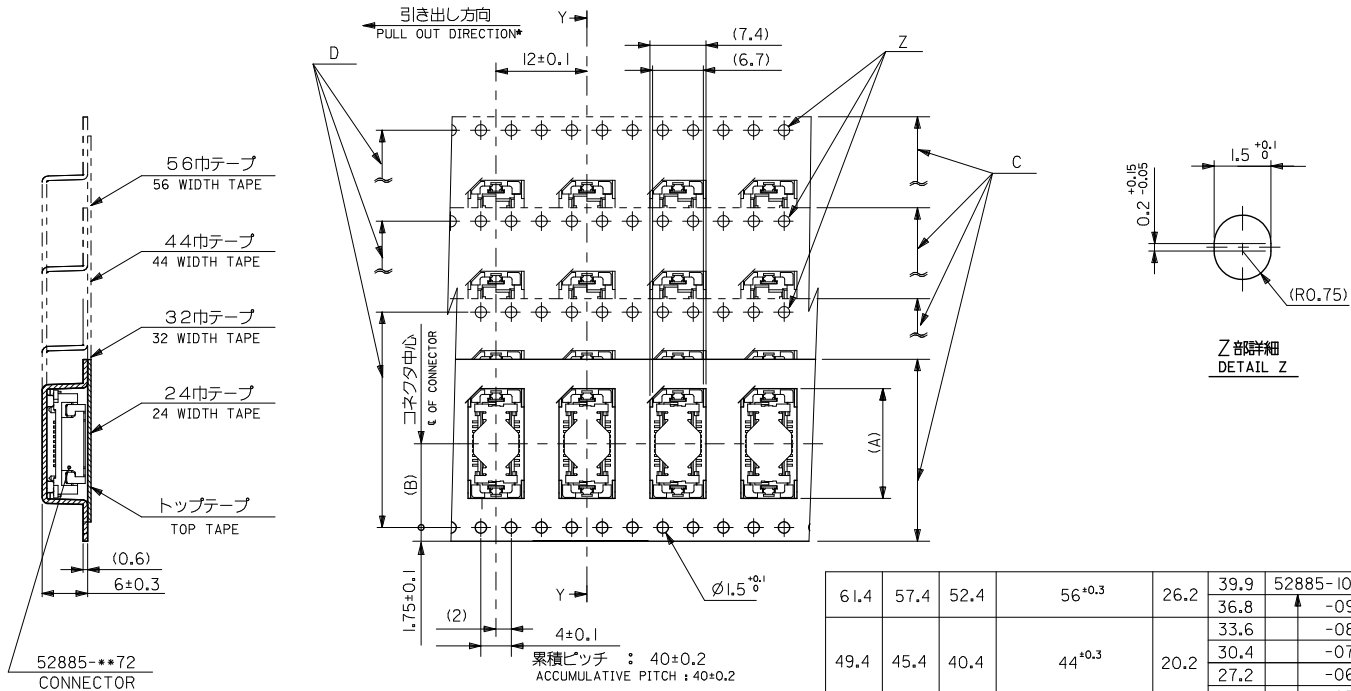
5. 材料

MATERIAL
キャリアテープ: ポリプロピレン (PP)
CARRIER TAPE: POLYPROPYLENE (PP)
トップテープ: PET, PE, PEF
TOP TAPE: PET, PE, PEF
リール: キャリアテープ幅 24mm~88mm : ポリスチレン
REEL: CARRIER TAPE WIDTH 24mm~88mm: POLYSTYRENE
キャリアテープ幅 104mm : 紙
CARRIER TAPE WIDTH 104mm: CARD BOARD

CONNECTOR SERIES No.		52885-***72	
SCALE	DESIGN UNITS	THIRD ANGLE PROJECTION	
---	METRIC		
52885-***72 TAPING PACKAGE -LEAD FREE-			
molex			
DOCUMENT NO.		SD-52885-004	
SHEET NO.		1 OF 3	
REVISED		THIS DRAWING CONTAINS INFORMATION THAT IS PROPRIETARY TO MOLEX INCORPORATED AND SHOULD NOT BE USED WITHOUT WRITTEN PERMISSION	
EC NO. J2013-1187	2013/04/18		
DRW:TKAHO	2013/04/18		
CHKD:TAKAWA	2013/04/18		
APPR:HSASAO	2013/04/19		
REV	DESCRIPTION		
1	GENERAL TOLERANCES (UNLESS SPECIFIED)		
	10 UNDER	± ---	
	10 OVER 30 UNDER	± ---	
	30 OVER	± ---	
	ANGULAR	± --- °	
	DRAFT WHERE APPLICABLE MUST REMAIN WITHIN DIMENSIONS		
	SEE TABLE		
	SIZE	A3	

9 8 7 6 5 4 3 2 1

10 9 8 7 6 5 4 3 2 1

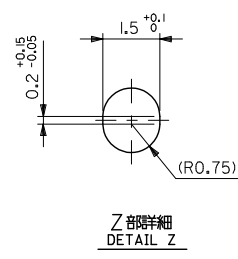
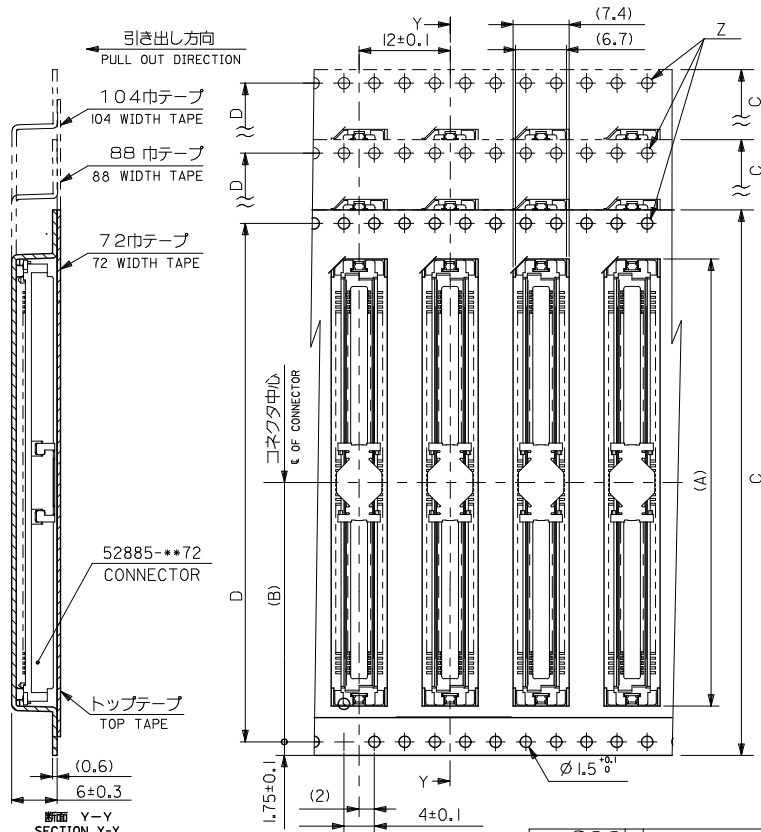


61.4	57.4	52.4	56 ^{+0.3}	26.2	39.9	52885-1074	100
					36.8	-0974	90
					33.6	-0874	80
					30.4	-0774	70
					27.2	-0674	60
					24.1	-0574	50
					20.9	-0474	40
					17.7	-0374	30
					14.5	-0274	20
29.4	25.4		24 ^{+0.3}	11.5	14.5	52885-0274	20
F	E	D	C	モジュール幅 CARRIER TAPE WIDTH	(B)	(A)	MATERIAL NO. 種別 CRT.No.

REVISIONS IEC NO. J2013-1187 DRAWN: KAIHO 2013/04/19 CHKD: TSKAWA 2013/04/19 APPR: SASAO 2013/04/19 REV. DESCRIPTION	GENERAL TOLERANCES (UNLESS SPECIFIED)		DIMENSION STYLE MM ONLY		CONNECTOR SERIES No. 52885-***72
	10 UNDER	±---	DRAWN BY M. NAGATA	DATE 2004/02/25	SCALE ---
	10 OVER 30 UNDER	±---	CHECKED BY K. TOJO	DATE 2004/02/25	DESIGN UNITS METRIC
	30 OVER	±---	APPROVED BY M. SASAO	DATE 2004/02/25	THIRD ANGLE PROJECTION
ANGULAR ±---°			MATERIAL NO.		DOCUMENT NO.
DRAFT WHERE APPLICABLE MUST REMAIN WITHIN DIMENSIONS			SEE TABLE		SD-52885-004
THIS DRAWING CONTAINS INFORMATION THAT IS PROPRIETARY TO MOLEX INCORPORATED AND SHOULD NOT BE USED WITHOUT WRITTEN PERMISSION					SHEET NO. 2 OF 3

9 8 7 6 5 4 3 2

10 9 8 7 6 5 4 3 2 1



104.4	100.4	104±0.3	50.2	84.4	52885-2474	240
88.4	84.4	88±0.3	42.2	71.7	52885-2074	200
72.4	68.4	72±0.3	34.2	59.0	52885-1674	160
				46.3	52885-1274	120
E	D	C	キャリアテープ幅 C CARRIER TAPE WIDTH	(B)	(A)	MATERIAL NO. 部品番号

累積ピッチ : 40±0.2
ACCUMULATIVE PITCH : 40±0.2

REVISED IEC NO. J2013-1187 DRAWN: KAIHO 2013/04/19 CHKD: TSKAWA 2013/04/19 APPR: SASAO 2013/04/19	GENERAL TOLERANCES (UNLESS SPECIFIED)		DIMENSION STYLE		CONNECTOR SERIES No.		52885-**72	
	10 UNDER ±---		MM ONLY		SCALE ---		DESIGN UNITS METRIC	
	10 OVER 30 UNDER ±---		DRAWN BY M. NAGATA		DATE 2004/02/25		TITLE	
	30 OVER ±---		CHECKED BY K. TOJO		DATE 2004/02/25		52885-**72 TAPING PACKAGE -LEAD FREE-	
ANGULAR ±--- °		APPROVED BY M. SASAO		DATE 2004/02/25		MATERIAL NO.		
DRAFT WHERE APPLICABLE MUST REMAIN WITHIN DIMENSIONS		SEE TABLE		DOCUMENT NO. SD-52885-004		SHEET NO. 3 OF 3		
		SIZE A3		THIS DRAWING CONTAINS INFORMATION THAT IS PROPRIETARY TO MOLEX INCORPORATED AND SHOULD NOT BE USED WITHOUT WRITTEN PERMISSION				

9 8 7 6 5 4 3 2