



**Distributor of Molex Connector Corporation: Excellent Integrated System Limited**  
Datasheet of 0357181010 - Connector Quick Connect Receptacle 16-20 AWG 0.187"  
(4.75mm) Crimp

Contact us: [sales@integrated-circuit.com](mailto:sales@integrated-circuit.com) Website: [www.integrated-circuit.com](http://www.integrated-circuit.com)

---

## **Excellent Integrated System Limited**

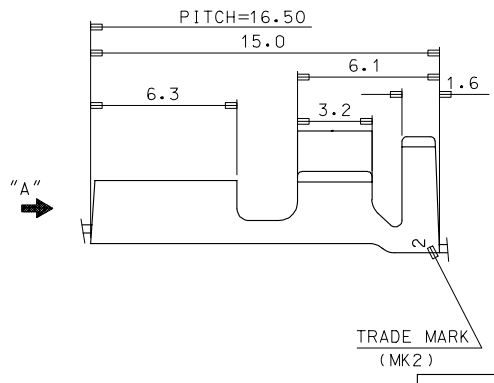
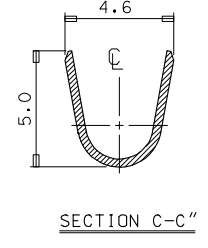
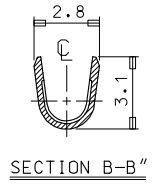
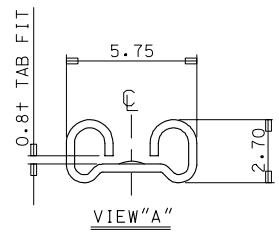
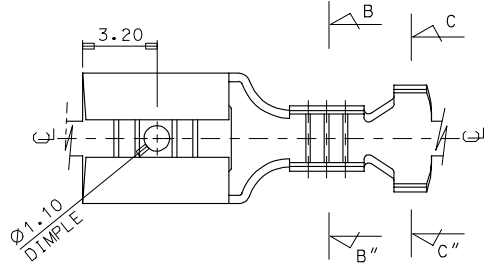
Stocking Distributor

Click to view price, real time Inventory, Delivery & Lifecycle Information:

[Molex Connector Corporation](#)  
[0357181010](#)

For any questions, you can email us directly:  
[sales@integrated-circuit.com](mailto:sales@integrated-circuit.com)

DWG. NO. SD-35718-10\*0  
 SIMILAR ITEM  
 PROJECT NO.  
 DO NOT SCALE DRAWING DIMENSION IN METRIC



- NOTES**
- MATERIAL: BRASS, 0.35THICKNESS
  - FINISH: 35718-1000:UNPLATED  
35718-1010:POST-TIN PLATED

REVISED ECN NO. KOR2005-0198 DRWN: JEJUN 05/04/29 CHK: W.Y.YANG APPR: C.W.LEE	QUALITY SYMBOLS MAJOR CRITICAL	GENERAL TOLERANCES: (UNLESS SPECIFIED)		SCALE 6:1	DESIGN UNITS	THIRD ANGLE PROJECTION	DIMENSIONS:		SHT	REV	
		mm	INCH	mm	INCH		mm	INCH	mm ONLY	REVISION	ON CAD ONLY
B1	DESCRIPTION	4 PLACES	±0.	±-	DRAWN BY & DATE	TITLE: .187 SLIP-ON REC' TERMINAL	MOLEX INCORPORATED				
		3 PLACES	±0.	±-	W.Y.YANG 93/05/24						
		2 PLACES	±0.30	±-	CHECKED BY & DATE	SHEET NO. 1 OF 1					
		1 PLACE	±0.20	±-	B.K.CHOI 93/05/24						
		ANGULAR: ± °		APPROVED BY & DATE	CAD FILENAME S7181000AAMI		MATERIAL NO. SEE NOTES		DRAWING NO. SD-35718-10*0		
DRAFT WHERE APPLICABLE MUST REMAIN WITHIN DIMENSIONS				THIS DRAWING CONTAINS INFORMATION THAT IS PROPRIETARY TO MOLEX INCORPORATED AND SHOULD NOT BE USED WITHOUT WRITTEN PERMISSION.							
				KOREA		MX-A3					