

Excellent Integrated System Limited

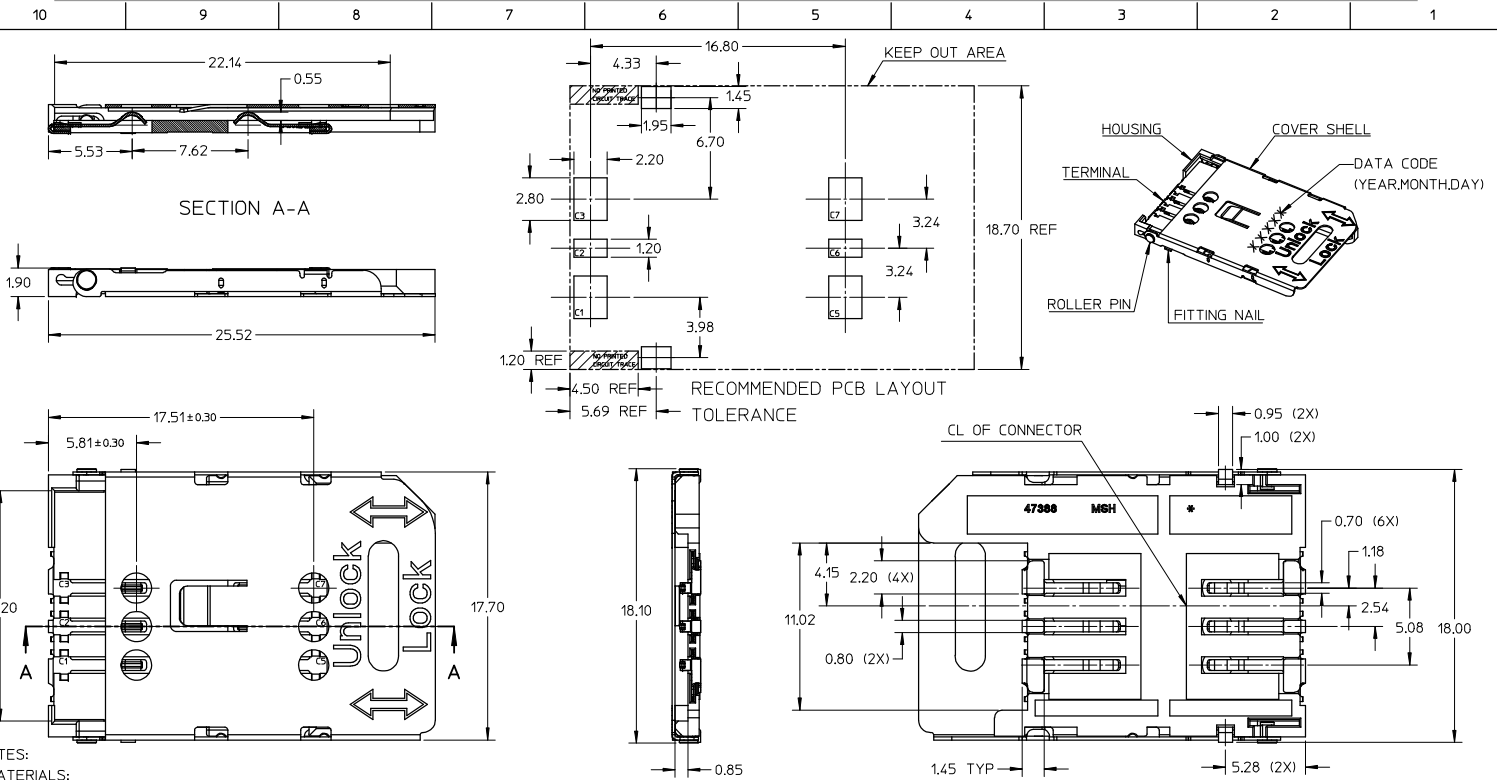
Stocking Distributor

Click to view price, real time Inventory, Delivery & Lifecycle Information:

[Molex Connector Corporation](#)
[0473880001](#)

For any questions, you can email us directly:

sales@integrated-circuit.com



NOTES:

- 1.MATERIALS:
 HOUSING: LCP, GLASS FILLED, UL 94V-0, COLOR: BLACK.
 TERMINAL:PHOSPHOR BRONZE, THICKNESS: 0.15mm.
 COVER SHELL:STAINLESS STEEL,THICKNESS: 0.2mm.
 ROLLER PIN:BRASS
 FITTING NAIL:BRASS THICKNESS 0.2mm
- 2.FINISH:
 TERMINAL:
 CONTACT AREA:0.75 MICRON GOLD PLATE OVER 1.27 MICRON MIN NICKEL.
 SOLDER AREA:3.8 MICRON TIN PLATE OVER 1.27 MICRON MIN NICKEL.
 ROLLER PIN:2.54 MICRON MIN NICKEL OVERALL.
 FITTING NAIL:2.54 MICRON MIN TIN OVER 1.27 MICRO NICKEL OVERALL
- 3.COPLANARITY:0.1 MAX.AMONG ALL SOLDER TAILS.
- 4.PRODUCT SPECIFICATION:PS-47388-001
- 5.PACKAGING INFORMATION:PK-47388-001

RELEASED EC NO: SH2008-0464 DRAWN: YWANG CHKD: XLZHU APPR: HWANG 2008/06/30 2008/07/01 2008/07/23	QUALITY SYMBOLS	GENERAL TOLERANCES (UNLESS SPECIFIED)	DIMENSION STYLE	SCALE	DESIGN UNITS	THIRD ANGLE PROJECTION
	▼=0 ▽=0	mm INCH 4 PLACES ±--- ±--- 3 PLACES ±--- ±--- 2 PLACES ±0.25 ±--- 1 PLACE ±--- ±--- ANGULAR ± 1°	MM ONLY	4:1	METRIC	DRAWN BY DATE YWANG 2006/01/04 CHECKED BY DATE XIXU 2006/08/02 APPROVED BY DATE JNCHEN 2006/08/03
		DRAFT WHERE APPLICABLE MUST REMAIN WITHIN DIMENSIONS	MATERIAL NO.	TITLE		
			473880001	1.90MM SIM CARD READER CONNECTOR		
			MOLEX INCORPORATED			
			DOCUMENT NO.	SHEET NO.		
			SD-47388-001	1 OF 1		
			THIS DRAWING CONTAINS INFORMATION THAT IS PROPRIETARY TO MOLEX INCORPORATED AND SHOULD NOT BE USED WITHOUT WRITTEN PERMISSION			