

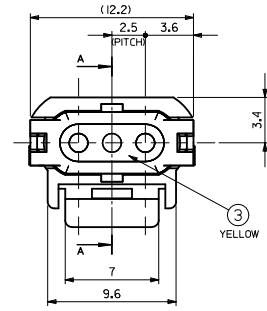
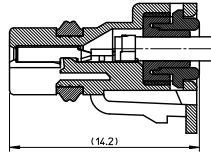
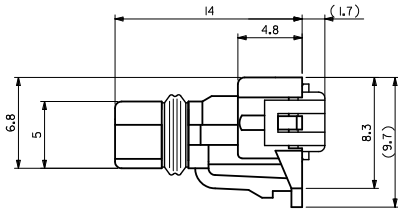
## **Excellent Integrated System Limited**

Stocking Distributor

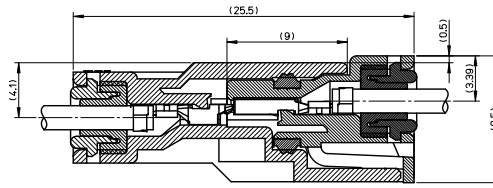
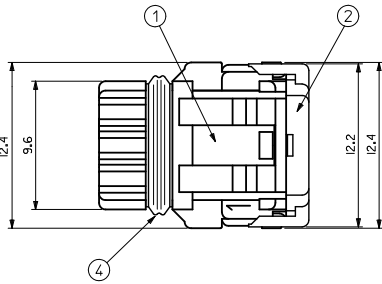
Click to view price, real time Inventory, Delivery & Lifecycle Information:

[Molex Connector Corporation](#)  
[0521170341](#)

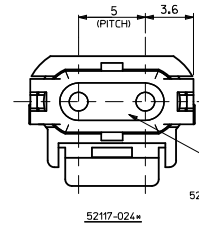
For any questions, you can email us directly:  
[sales@integrated-circuit.com](mailto:sales@integrated-circuit.com)



52117-034\*



嵌合状態図  
FULLY MATED CONDITION



52117-024\*

52117-0240-0242 : RED  
52117-0243 : BLACK

赤 RED	52117-0342	3
黒 BLACK	52117-0341	3
白 WHITE	52117-0340	3
白 WHITE	52117-0243	2
赤 RED	52117-0242	2
黒 BLACK	52117-0241	2
白 WHITE	52117-0240	2
色 COLOR	MATERIAL NO.	極数 CKT

注 記  
NOTE

- 適合端子: 50039-8\*00  
APPLICABLE TERMINAL: 50039-8\*00
- 適合相手: 52116-0\*4\*  
MATES WITH: 52116-0\*4\*
- 製品仕様書: PS-52117-007  
PRODUCT SPECIFICATION: PS-52117-007
- 取組説明書: AS-52117-001  
APPLICATION SPECIFICATION: AS-52117-001
- ELV及RoHS適合品  
ELV AND ROHS COMPLIANT

シロソニム	色	リングシール	④
SILICONE	YELLOW	RING SEAL	
シロソニム	色参照 SEE DRAWING	ワイヤエンドシール	③
SILICONE		WIRE END SEAL	
ポリエステル (1576G.F.)	色参照 SEE CHART	キャップ	②
POLYESTER (1576G.F.)		CAP	
ポリエステル (1576G.F.)	色参照 SEE CHART	レセプタハウジング	①
POLYESTER (1576G.F.)		REC. HOUSING	
材 料	色	名 称	
MATERIAL	COLOR	TITLE	
構成部品 COMPONENTS			

REVISED & REDRAWN EC NO: ITR2012-0029 DRAWN: JINAKA 2011/11/18 CHKD: SANDO 2011/12/14 APPR: MAYAMOTO 2012/01/18	GENERAL TOLERANCES (UNLESS SPECIFIED)	DIMENSION STYLE MM ONLY	SCALE 5:1	DESIGN UNITS METRIC	THIRD ANGLE PROJECTION
	10 UNDER ± 0.2	DRAWN BY Y. ASHIZAWA	DATE 1988/7/8	TITLE 2.5 WATERPROOF CONN. REC. HSG ASSY W/POSITIVE LOCK	
	10 OVER 30 UNDER ± 0.25	CHECKED BY M. SAKANO	DATE 1988/7/8	MOLEX INCORPORATED	
	30 OVER ± 0.3	APPROVED BY MAYAMOTO	DATE 2012/01/18	DOCUMENT NO. SD-52117-001	
ANGULAR ± 3 °	DRAFT WHERE APPLICABLE MUST REMAIN WITHIN DIMENSIONS		MATERIAL NO.		SHEET NO. 1 OF 1
SEE CHART THIS DRAWING CONTAINS INFORMATION THAT IS PROPRIETARY TO MOLEX INCORPORATED AND SHOULD NOT BE USED WITHOUT WRITTEN PERMISSION					