

Excellent Integrated System Limited

Stocking Distributor

Click to view price, real time Inventory, Delivery & Lifecycle Information:

[Molex Connector Corporation](#)
[0002092170](#)

For any questions, you can email us directly:

sales@integrated-circuit.com

PART NO.	ENG. NO.	
02-09-2170	42138-(P90)I	
02-09-2171	42138-(P90)IL	
02-09-2172	42138-(IP90)I	OBsolete
02-09-2173	42138-(IP90)IL	
-	-	
-	-	

LEGEND

42138-*(****)*

CRIMP STYLE
BLANK="A"
I="B"

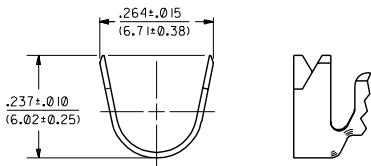
FORM
BLANK=CHAIN
L=LOOSE

P=PREPLATE
BLANK=POSTPLATE

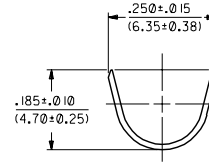
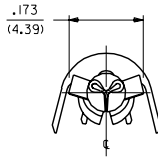
FINISH CODE

FINISHES, PER ES-88:

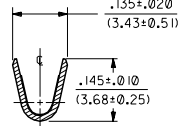
901 HOT TIN DIP .000020/(0.0005) MIN.



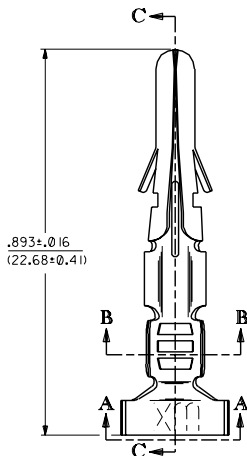
VIEW "A-A"
CRIMP STYLE "B"



VIEW "A-A"
CRIMP STYLE "A"



SECTION "B-B"



SECTION "C-C"

MATERIAL:

CARTRIDGE BRASS, ALLOY #C26000,
.013/(0.33) THICK, SPRING TEMPER.

NOTES:

1. TERMINAL FOR USE WITH .093/(2.36) SERIES HOUSINGS AND WILL ACCEPT 14 THRU 18 AWG WIRE.
2. INSULATION CRIMP STYLE "A" ACCEPTS A MAX. INSULATION DIA. OF .180/(4.57). INSULATION CRIMP STYLE "B" IS INTENDED FOR DOUBLE CRIMP OF TWO 18 AWG WIRES; ONE WITH A MAX. INSULATION DIA. OF .170/(4.32), THE OTHER A MAX. INSULATION DIA. OF .110/(2.79).

CHAIN FORM
FULL SCALE



DIMENSIONS SHOWN IN METRIC/INCH		MFG. SH. REV. LTR. REVISIONS	
UNLESS OTHERWISE SPECIFIED TOLERANCES ARE AS FOLLOWS:		REVISE ONLY ON CAD SYSTEM	
3 PLACE ± .010	---	TITLE	
2 PLACE ± .018	± 0.25	CRIMP TERMINAL, MALE	
1 PLACE ---	± 0.35	.093/(2.36) DIA.	
DRAFT ANGLES APPLICABLE MUST REMAIN WITHIN DIMENSIONS		14-18 AWG W/LARGE INSUL.	
DRAWN: [Signature]		MOLEX INCORPORATED	
CHECKED: [Signature]		SHEET NO. 1 OF 1	
APP'D: [Signature]		DATE 2/21/92	
BY: [Signature]		PART NO. SD-42138-#	
SCALE 6:1		DRG. NO. [Blank]	
FILE NAME S:\2138X1		NO. OF SHEETS CONTAINING INFORMATION THAT IS PROPRIETARY TO MOLEX INC. AND SHOULD NOT BE LOANED WITHOUT WRITTEN PERMISSION. CP	

H	OBsolete P/N UCR2002-0210 COMERC 01/10/99
G1	REVISED ESN UCR1999-0518 STAMBAUGH 99-2-9
G	REVISE PER ECR U3 0597 CAC 4/1/93 RW
F	REVISE PER ECR U3 0159 CAC 2/9/93 RW
E	REVISE PER ECR U2 0674 CAC 4/28/92 RW
D	REVISE & REDRAW PER ECR U2 0081 CAC 2/21/92 RW

42138

A