

## Excellent Integrated System Limited

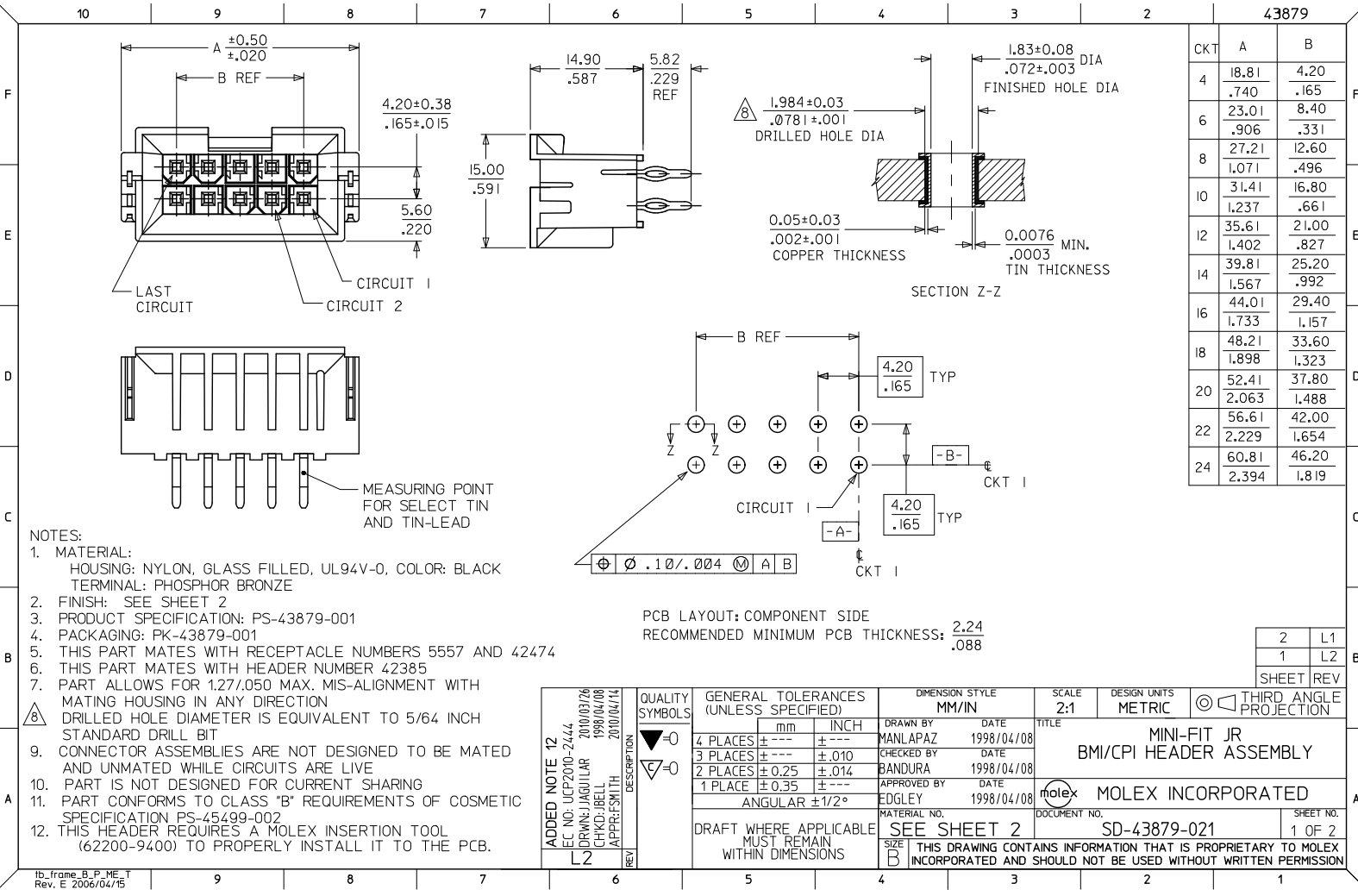
Stocking Distributor

Click to view price, real time Inventory, Delivery & Lifecycle Information:

[Molex Connector Corporation](#)  
[0438790043](#)

For any questions, you can email us directly:

[sales@integrated-circuit.com](mailto:sales@integrated-circuit.com)



	10	9	8	7	6	5	4	3	2	43879
F	FINISH: 1 TIN OVER NICKEL		FINISH: 2 GOLD & TIN/LEAD OVER NICKEL		FINISH: 3 MATTE TIN/LEAD OVER NICKEL		FINISH: 4 GOLD & TIN OVER NICKEL			
	CKTS	MATERIAL NO.	CKTS	MATERIAL NO.	CKTS	MATERIAL NO.	CKTS	MATERIAL NO.		
	04	43879-0022	04	43879-0033	04	OBSOLETE	04	43879-0055		
	06	43879-0023	06	43879-0034	06	43879-0045	06	43879-0056		
	08	NOT TOOLED	08	NOT TOOLED	08	NOT TOOLED	08	NOT TOOLED		
	10	43879-0025	10	43879-0036	10	OBSOLETE	10	43879-0058		
	12	NOT TOOLED	12	NOT TOOLED	12	NOT TOOLED	12	NOT TOOLED		
E	14	43879-0027	14	43879-0038	14	OBSOLETE	14	43879-0060		
	16	NOT TOOLED	16	NOT TOOLED	16	NOT TOOLED	16	NOT TOOLED		
	18	43879-0029	18	43879-0040	18	OBSOLETE	18	43879-0062		
	20	NOT TOOLED	20	NOT TOOLED	20	NOT TOOLED	20	NOT TOOLED		
	22	NOT TOOLED	22	NOT TOOLED	22	NOT TOOLED	22	NOT TOOLED		
	24	43879-0032	24	43879-0043	24	OBSOLETE	24	43879-0065		

D FINISH:

1 - 0.00254/.000100 MIN. BRIGHT TIN OVER 0.00127/.000050 MIN. NICKEL OVERALL.

2 - 0.00076/.000030 MIN. GOLD IN CONTACT AREA, 0.00254/.000100 MIN. 90/10 MATTE TIN/LEAD IN TAIL AREA, OVER 0.00127/.000050 MIN. NICKEL OVERALL.

3 - 0.00254/.000100 MIN. 90/10 MATTE TIN/LEAD OVER 0.00127/.000050 MIN. NICKEL OVERALL.

4 - 0.00076/.000030 MIN. GOLD IN CONTACT AREA, 0.00254/.000100 MIN. MATTE TIN IN TAIL AREA, OVER 0.00127/.000050 MIN. NICKEL OVERALL.

A	L1	SEE SHEET ONE E.C. NO: IJCP2010-1250 DRAWN: JAGUILAR 2009/12/01 CHKD: BELL 2009/12/01 APPR: SMITH 2009/12/01	QUALITY SYMBOLS ▽=0 ▽=0	GENERAL TOLERANCES (UNLESS SPECIFIED)		DIMENSION STYLE MM/IN		SCALE ---	DESIGN UNITS METRIC	THIRD ANGLE PROJECTION		
					mm	INCH	DRAWN BY MANLAPAZ	DATE 1998/04/08	TITLE MINI-FIT JR BMI/CPI HEADER ASSEMBLY			
				4 PLACES ± --- ± ---		CHECKED BY BANDURA	DATE 1998/04/08					
				3 PLACES ± --- ± .010		APPROVED BY EDGLEY	DATE 1998/04/08	MOLEX INCORPORATED DOCUMENT NO. SD-43879-021		SHEET NO. 2 OF 2		
2 PLACES ± 0.25 ± .014		DRAFT WHERE APPLICABLE MUST REMAIN WITHIN DIMENSIONS		MATERIAL NO. SEE CHART		THIS DRAWING CONTAINS INFORMATION THAT IS PROPRIETARY TO MOLEX INCORPORATED AND SHOULD NOT BE USED WITHOUT WRITTEN PERMISSION						
1 PLACE ± 0.35 ± ---		ANGULAR ±1/2°		SIZE B								