

## Excellent Integrated System Limited

Stocking Distributor

Click to view price, real time Inventory, Delivery & Lifecycle Information:

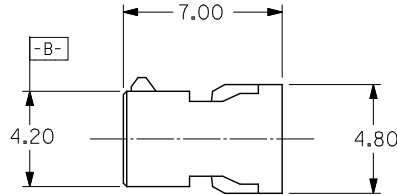
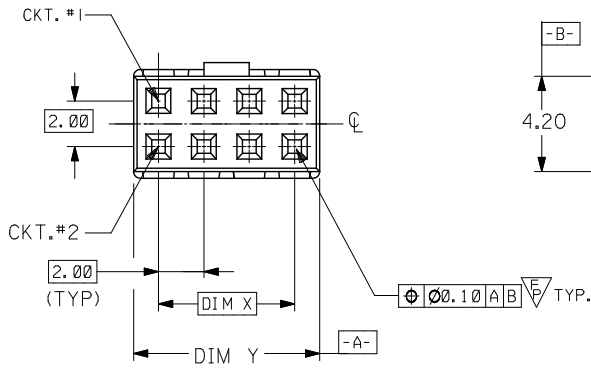
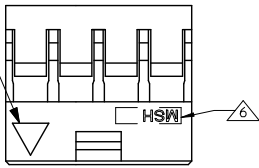
[Molex Connector Corporation](#)  
[0511100860](#)

For any questions, you can email us directly:

[sales@integrated-circuit.com](mailto:sales@integrated-circuit.com)

PART NUMBER	CKT SIZE	DIM X	DIM Y
51110-0460	4	2.00	4.20
51110-0660	6	4.00	6.20
51110-0860	8	6.00	8.20
51110-1060	10	8.00	10.20
51110-1260	12	10.00	12.20

IST CIRCUIT IDENTIFICATION

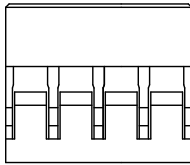


**LEGEND:**

51110 - \*\*60  
CKT SIZE

**NOTES :**

- MATERIAL : GLASS FILLED POLYESTER UL RATED 94V-0, COLOUR BLACK.
  - FOR ILLUSTRATION PURPOSES, 8CKT CKT SIZE HOUSING IS AS SHOWN.
  - PARTS TO BE USED WITH CRIMP TERMINAL PART NUMBER: 50394-8\*\*\*.
  - APPLICABLE WIRE RANGE : AWG # 24 - #30"
  - WIRE INSULATION RANGE : DIAMETER 1.40MM MAXIMUM.
- △ MSH LOGO, CAVITY ID AND 1ST CKT IDENTIFICATION TO BE LOCATED APPROXIMATELY AS SHOWN.



CHG MFG LOGO	EC NO. S2015-0352	DRAWN BY SEE 2014/12/09	CHKD:COLYNN GOH 2014/12/09	APPR:KILIM 2014/12/19	DESCRIPTION	REV	QUALITY SYMBOLS	GENERAL TOLERANCES (UNLESS SPECIFIED)		DIMENSION STYLE		SCALE NTS	DESIGN UNITS METRIC	THIRD ANGLE PROJECTION		
								mm	INCH	MM ONLY	DATE					
							▽=0	4 PLACES ±---	±---	DRAWN BY SEE	DATE 1995/05/22	TITLE 2MM GRID,WTB CONN. CRIMP RECEPT. HSG.	molex	SHEET NO. 1 OF 1		
						▽=0	3 PLACES ±---	±---	CHECKED BY SK TOH	DATE 1995/08/15	MATERIAL NO. SEE TABLE				DOCUMENT NO. SD-51110-***60	INCORPORATED AND SHOULD NOT BE USED WITHOUT WRITTEN PERMISSION
						▽=1	2 PLACES ±0.20	±---	APPROVED BY	DATE						
								1 PLACE ±---	±---							
								0 PLACE ±	±							
								ANGULAR ± 3°								
								DRAFT WHERE APPLICABLE MUST REMAIN WITHIN DIMENSIONS								