

Excellent Integrated System Limited

Stocking Distributor

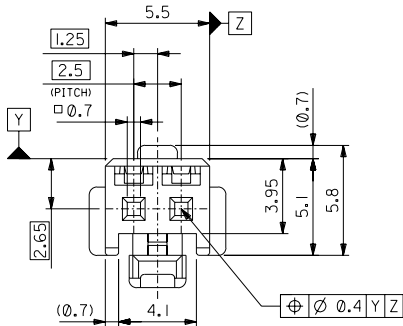
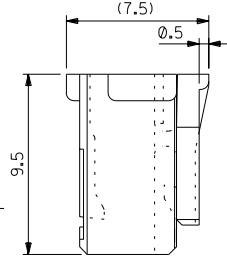
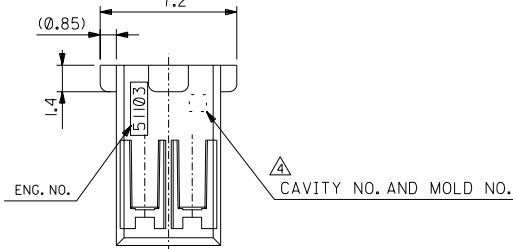
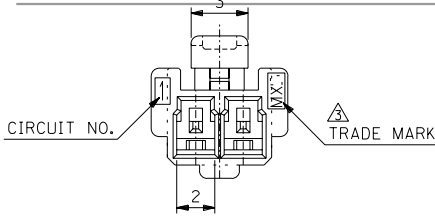
Click to view price, real time Inventory, Delivery & Lifecycle Information:

[Molex Connector Corporation](#)
[0511030300](#)

For any questions, you can email us directly:

sales@integrated-circuit.com

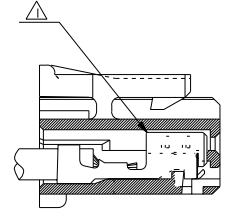
DWG. NO. SD-51103-020



注記 NOTES

1. 適合ターミナル: 50351-8*00
APPLICABLE TERMINAL: 50351-8*00
2. 嵌合相手: 53464 シリーズ
MATE WITH: 53464 SERIES.
3. MXJと表示。
INDICATE MXJ.
4. キャビティー番号: 1桁~2桁の数字
金型番号: アルファベット1文字にて構成。(例, 1A, 10B)
FORMED BY: 1 DIGIT TO 2 DIGIT NUMBERS (TO CAVITY NO.)
AND BY 1 LETTER OF ALPHABET (TO MOLD NO.),
(e.g., 1A, 10B)
5. 製品番号の末尾は製品の色を示す
LAST NUMBER OF DWG.NO. MEANS PART COLLER.

51103-**25
色番号 COLLER CODE
5 蛍光灰色 GRAY



ターミナル装着状態図
TERMINAL ASSEMBLY DRAWING

51103-0225	2
MATERIAL NO.	NO. OF CIRCUIT

DO NOT SCALE DRAWING

8	ENG. NO. DRAWN: CHK'G: APPR:	7	ENG. NO. DRAWN: CHK'G: APPR:	6	RELEASED '02/11/22 DRAWN: N.IITO CHK'G: K.SAKAWA APPR: T.YAMAGUCHI
---	---------------------------------------	---	---------------------------------------	---	---

MATERIAL 材料 POLYBUTYLENE TEREPHTHALATE UL94V-0	FINISH 仕上り	WIRE RANGE 適用電線範囲	INS. RANGE 被覆外径
---	---------------	----------------------	--------------------

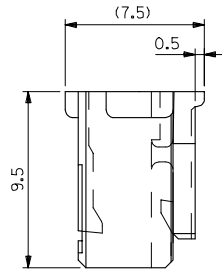
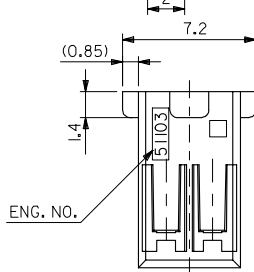
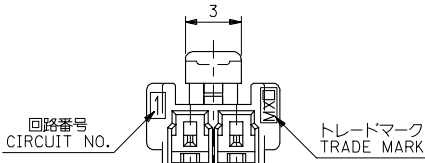
GENERAL TOLERANCES: (UNLESS SPECIFIED) 一般公差	SCALE 5:1	DESIGN UNITS mm INCH
10 UNDER 未満	+0.2	
10 OVER 以上	+0.25	
30 OVER 以上	+0.3	
ANGLE 角度	+3°	

DRAWN BY & DATE N.IITO '02/11/22	TITLE: 2.5 WIRE TO BOARD CONN. HOUSING (POSITIVE LOCK)
CHECKED BY & DATE K.SAKAWA '02/11/22	
APPROVED BY & DATE T.YAMAGUCHI '02/11/22	
CAD FILENAME SD-51103-020.S01	

DIMENSIONS: mm INCH mm INCH		SHT CAD ONLY	REV CAD ONLY
MOLEX INCORPORATED		MATERIAL NO. SEE CHART	DRAWING NO. SD-51103-020
MATERIAL NO. SEE CHART		DRAWING NO. SD-51103-020	SHEET NO. 1 OF 1
MATERIAL NO. SEE CHART		DRAWING NO. SD-51103-020	SIZE B

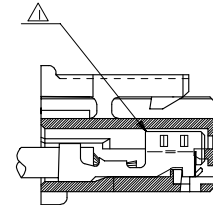
EN-02J(097) MXJ-54

10 9 8 7 6 5 4 3 2 1

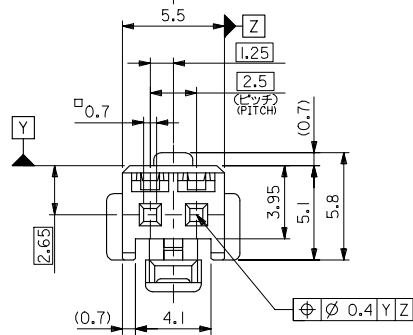


注記 NOTES

- △ 適合ターミナル : 5035I-8*00
APPLICABLE TERMINAL : 5035I-8*00
2. 嵌合相手 : 53375,53426 シリーズ
MATE WITH : 53375,53426 SERIES
- △ 偶数極の製品に適用。
APPLY EVEN CIRCUIT PRODUCTS.
4. 製品型番の下1桁は色を表す。
LAST DIGIT OF PART NUMBER INDICATES COLOR.
0 : 白 WHITE 1 : 黒 BLACK 2 : 赤 RED
3 : 黄 YELLOW 4 : 青 BLUE



ターミナル装着状態図
TERMINAL ASSEMBLY DRAWING



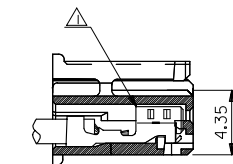
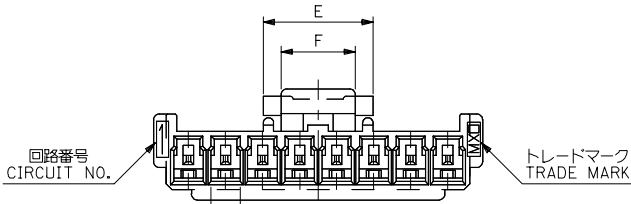
2極に適用
FOR 2 CKTS.

51103-020*	2
MATERIAL NO.	CIRCUIT
◎	THIRD ANGLE PROJECTION

RELEASED EC NO. : J2005-2009 DRAWN BY M.UMEDA CHKD BY K.TOYODA APP. BY N.UKITA REV.	GENERAL TOLERANCES (UNLESS SPECIFIED)		DIMENSION STYLE MM ONLY	SCALE ---	DESIGN UNITS METRIC	TITLE 2.5 W/B CONN. HOUSING (POSITIVE LOCK)
	10 UNDER	± 0.2	DRAWN BY M.UMEDA	DATE 2005/01/14	MOLEX INCORPORATED	
	10 OVER 30 UNDER	± 0.25	CHECKED BY K.TOYODA	DATE 2005/01/14		
	30 OVER	± 0.3	APPROVED BY N.UKITA	DATE 2005/01/14	DOCUMENT NO. SD-51103-021	SHEET NO. 1 OF 2
ANGULAR ± 3 °		DRAFT WHERE APPLICABLE MUST REMAIN WITHIN DIMENSIONS		MATERIAL NO. SEE CHART		SIZE A3
THIS DRAWING CONTAINS INFORMATION THAT IS PROPRIETARY TO MOLEX INCORPORATED AND SHOULD NOT BE USED WITHOUT WRITTEN PERMISSION						

10 9 8 7 6 5 4 3 2 1

F
E
D
C
B
A

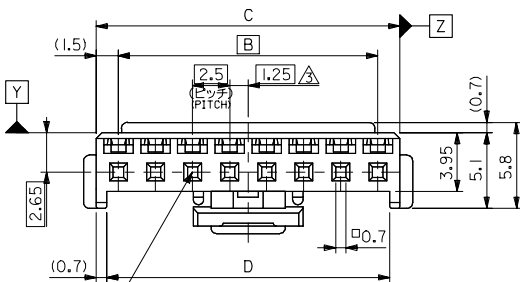
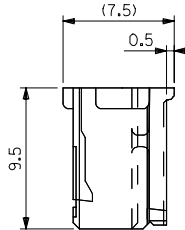
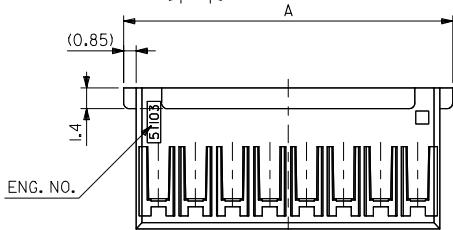


ターミナル装着状態図
TERMINAL ASSEMBLY DRAWING

注記 NOTES

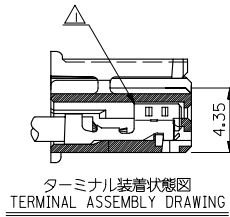
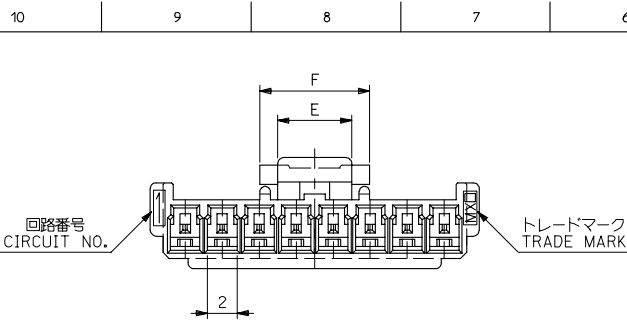
1. 適合ターミナル: 50351-8*00
APPLICABLE TERMINAL: 50351-8*00
2. 嵌合相手: 53375,53426 シリーズ
MATE WITH: 53375,53426 SERIES
3. 偶数極の製品に適用。
APPLY EVEN CIRCUIT PRODUCTS.
4. 製品型番の下1桁は色を表す。
LAST DIGIT OF PART NUMBER INDICATES COLOR.
0:白 WHITE 1:黒 BLACK 2:赤 RED
3:黄 YELLOW 4:青 BLUE

3-15 極に適用
FOR 3-15 CKTS.



5	7.4	36.6	38	35	39.7	51103-150*	15
↑	↑	34.1	35.5	32.5	37.2	↑ -140*	14
		31.6	33	30	34.7	↑ -130*	13
		29.1	30.5	27.5	32.2	↑ -120*	12
		26.6	28	25	29.7	↑ -110*	11
		24.1	25.5	22.5	27.2	↑ -100*	10
		21.6	23	20	24.7	↑ -090*	9
		19.1	20.5	17.5	22.2	↑ -080*	8
		16.6	18	15	19.7	↑ -070*	7
		14.1	15.5	12.5	17.2	↑ -060*	6
		11.6	13	10	14.7	↑ -050*	5
5	7.4	9.1	10.5	7.5	12.2	↓ -040*	4
3	5	6.6	8	5	9.7	51103-030*	3
F	E	D	C	B	A	MATERIAL NO.	CIRCUIT

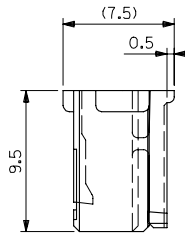
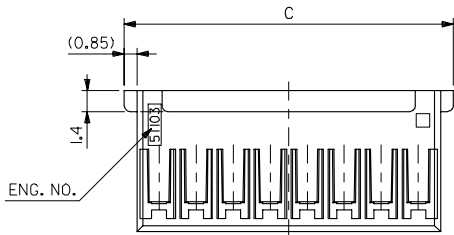
RELEASED EC NO: J2005-2009 DRAWN BY: M.UMEDA CHECKED BY: CHIKIOYODA APPROVED BY: N.UKITA DATE: 2005/02/04 DATE: 2005/02/14 DATE: 2005/02/14	GENERAL TOLERANCES (UNLESS SPECIFIED)		DIMENSION STYLE	SCALE	DESIGN UNITS	THIRD ANGLE PROJECTION	
			MM ONLY	---	METRIC	☉	
	10 UNDER	± 0.2	DRAWN BY	DATE	TITLE 2.5 W/B CONN. HOUSING (POSITIVE LOCK)		
	10 OVER 30 UNDER	± 0.25	M.UMEDA	2005/01/14			
30 OVER	± 0.3	CHECKED BY	DATE	MOLEX INCORPORATED			
ANGULAR	± 3 °	KTOYODA	2005/01/14				
DRAFT WHERE APPLICABLE MUST REMAIN WITHIN DIMENSIONS		APPROVED BY	DATE	MATERIAL NO.	DOCUMENT NO.	SHEET NO.	
		N.UKITA	2005/01/14	SEE CHART	SD-51103-021	2 OF 2	
SIZE: THIS DRAWING CONTAINS INFORMATION THAT IS PROPRIETARY TO MOLEX INCORPORATED AND SHOULD NOT BE USED WITHOUT WRITTEN PERMISSION							



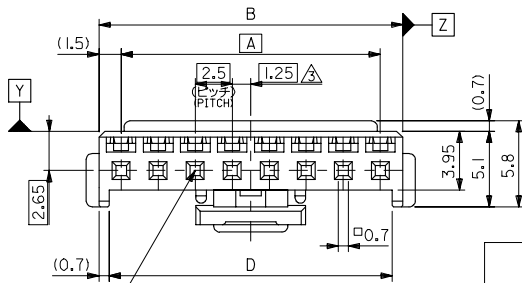
注記 NOTES

- △ 適合ターミナル : 50351-8*00
APPLICABLE TERMINAL : 50351-8*00
- 2. 嵌合相手 : 53375,53376,53388,53389
53426 シリーズ
MATE WITH : 53375,53376,53388,53389
53426 SERIES
- △ 偶数極の製品に適用。
APPLY EVEN CIRCUIT PRODUCTS.

3-15 極に適用
FOR 3-15 CKTS.



7.4	5	36.6	39.7	38	35	51103-1500	15
↑	↑	34.1	37.2	35.5	32.5	↑ -1400	14
		31.6	34.7	33	30	↑ -1300	13
		29.1	32.2	30.5	27.5	↑ -1200	12
		26.6	29.7	28	25	↑ -1100	11
		24.1	27.2	25.5	22.5	↑ -1000	10
		21.6	24.7	23	20	↑ -0900	9
		19.1	22.2	20.5	17.5	↑ -0800	8
		16.6	19.7	18	15	↑ -0700	7
		14.1	17.2	15.5	12.5	↑ -0600	6
		11.6	14.7	13	10	↑ -0500	5
7.4	5	9.1	12.2	10.5	7.5	↑ -0400	4
5	3	6.6	9.7	8	5	51103-0300	3
F	E	D	C	B	A	MATERIAL NO.	極数 OF CKT.



材料 MATERIAL
PBTP, UL94V-0
(色 WHITE)

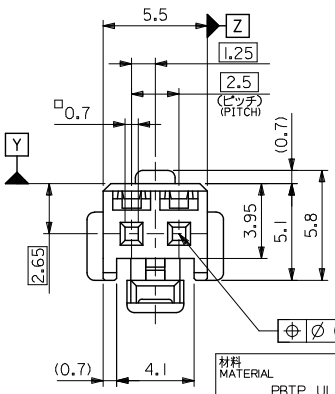
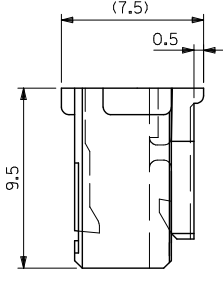
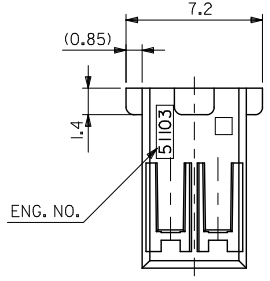
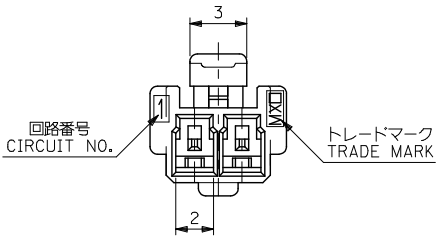
仕上がり FINISH —

適用電線範囲 WIRE RANGE —

被覆外径 INS. RANGE —

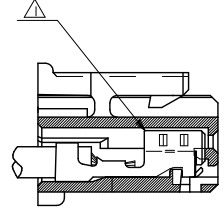
REVISED EC NO: J2005-3799	2005/06/20 DRAWN: MABEI	2005/06/21 CHK: KIKIYODA	2005/06/27 APP: R. NIKITA	DESCRIPTION	GENERAL TOLERANCES (UNLESS SPECIFIED)	10 UNDER ±0.2	10 OVER 30 UNDER ±0.25	30 OVER ±0.3	ANGULAR ±3 °	DRAFT WHERE APPLICABLE MUST REMAIN WITHIN DIMENSIONS	DIMENSION STYLE MM ONLY	SCALE 4:1	DESIGN UNITS METRIC	THIRD ANGLE PROJECTION	
DRAWN BY T. ITO		DATE '92/05/06		TITLE 2.5 WIRE TO BOARD CONN HOUSING (POSITIVE LOCK)		CHECKED BY H. HIRAMOTO		DATE '95/10/03		APPROVED BY M. FUKUSHIMA		DATE '95/10/03		MATERIAL NO. SD-51103-023	
MOLEX INCORPORATED											DOCUMENT NO. SD-51103-023		SHEET NO. 1 OF 2		
SIZE A3 THIS DRAWING CONTAINS INFORMATION THAT IS PROPRIETARY TO MOLEX INCORPORATED AND SHOULD NOT BE USED WITHOUT WRITTEN PERMISSION															

10 9 8 7 6 5 4 3 2 1



注記 NOTES

- △ 適合ターミナル: 50351-8*00
APPLICABLE TERMINAL: 50351-8*00
- 2. 嵌合相手: 53375,53426 シリーズ
MATE WITH: 53375,53426 SERIES



ターミナル装着状態図
TERMINAL ASSEMBLY DRAWING

2 極に適用
FOR 2 CKTS.

材料 MATERIAL	PBTP, UL94V-0 (白色 WHITE)
仕上げ FINISH	—
適用電線範囲 WIRE RANGE	—
被覆外径 INS. RANGE	—

REVISED REV. NO. J2005-3799 DRAWN BY: 2005/06/20 CHKD BY: 2005/06/21 APPR. BY: 2005/06/27	DESCRIPTION	GENERAL TOLERANCES (UNLESS SPECIFIED)	DIMENSION STYLE	SCALE	DESIGN UNITS	MATERIAL NO. 51103-0200	SHEET NO. 2 OF 2
		10 UNDER ±0.2	MM ONLY	5:1	METRIC		
REVISED REV. NO. J2005-3799 DRAWN BY: 2005/06/20 CHKD BY: 2005/06/21 APPR. BY: 2005/06/27	DESCRIPTION	10 OVER 30 UNDER ±0.25	DRAWN BY DATE	TITLE	2.5 WIRE TO BOARD CONN HOUSING (POSITIVE LOCK)		
		30 OVER ±0.3	T. ITO '92/05/06				
REVISED REV. NO. J2005-3799 DRAWN BY: 2005/06/20 CHKD BY: 2005/06/21 APPR. BY: 2005/06/27	DESCRIPTION	ANGULAR ±3 °	CHECKED BY DATE	MOLEX INCORPORATED			
		DRAFT WHERE APPLICABLE MUST REMAIN WITHIN DIMENSIONS	H. HIRAMOTO '95/10/03				
REVISED REV. NO. J2005-3799 DRAWN BY: 2005/06/20 CHKD BY: 2005/06/21 APPR. BY: 2005/06/27	DESCRIPTION	SEE CHART	APPROVED BY DATE	MATERIAL NO. SD-51103-023			
		THIS DRAWING CONTAINS INFORMATION THAT IS PROPRIETARY TO MOLEX INCORPORATED AND SHOULD NOT BE USED WITHOUT WRITTEN PERMISSION	M. FUKUSHIMA '95/10/03				