

## Excellent Integrated System Limited

Stocking Distributor

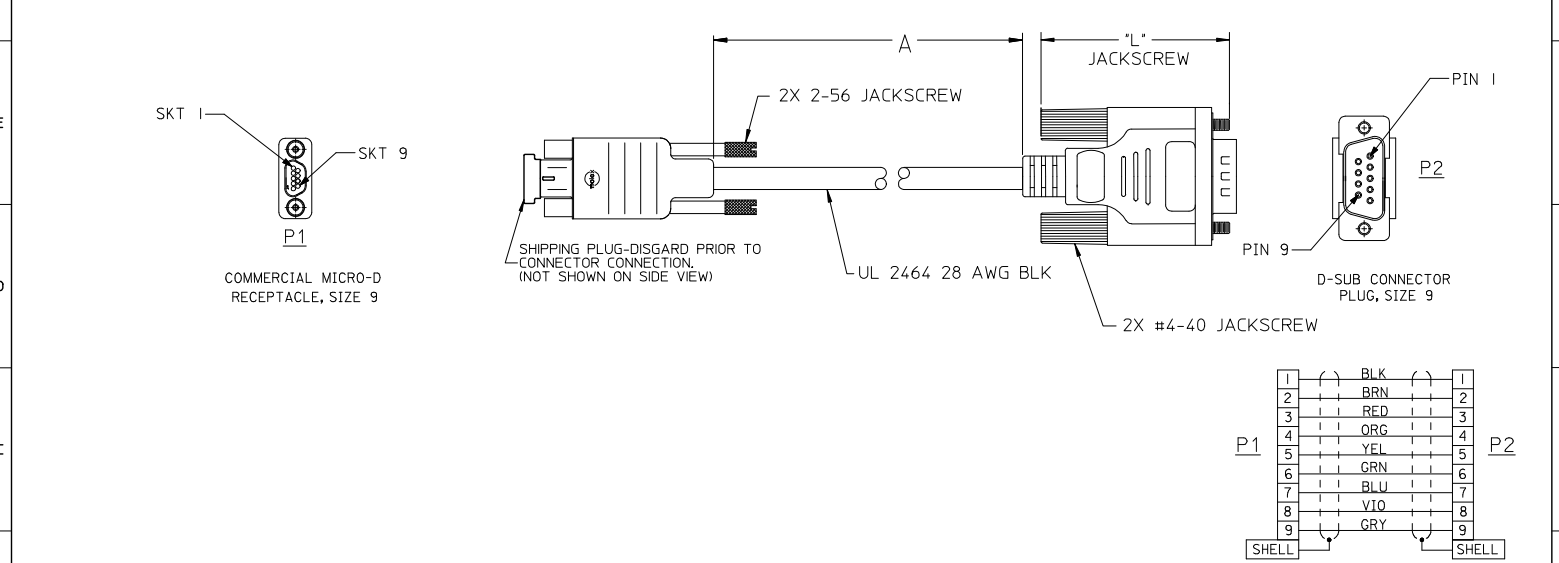
Click to view price, real time Inventory, Delivery & Lifecycle Information:

[Molex Connector Corporation](#)  
[0834219037](#)

For any questions, you can email us directly:

[sales@integrated-circuit.com](mailto:sales@integrated-circuit.com)

10	9	8	7	6	5	4	3	2	83421
MATERIAL NO.	ENGINEERING NO.	CUT LENGTH "A"	TOLERANCES	DIM "L"					
834219036	83421-9036	18.5 / 470.0	± .5 / 13.00	1.83 / 46.5					
834219037	93421-9037	36.5 / 927.1	± .5 / 13.00	1.83 / 46.5					
834219038	93421-9038	72.5 / 1841.5	± .5 / 13.00	1.83 / 46.5					
834219286	83421-9286	196.8 / 5000.0	+3.94 / 100.0	1.73 / 44.0					



REV LETTER 'I' WAS INTENTIONALLY NOT USED

REMOVE 834219289 EC NO: WNA2010-0093 DRAWN BY: CHYKORUPERT CHECKED BY: APPR: JIMURPHY 2009/08/17 2009/09/23	QUALITY SYMBOLS ▽=0 ▽=0	GENERAL TOLERANCES (UNLESS SPECIFIED)		DIMENSION STYLE IN/MM		SCALE	DESIGN UNITS INCH	THIRD ANGLE PROJECTION	
		4 PLACES ± --- ± ---	3 PLACES ± --- ± .005	2 PLACES ± 0.13 ± .020	1 PLACE ± 0.51 ± ---	ANGULAR ± .5 °	DRAWN BY: J. LOMASTRO DATE: 02-17-06	CHECKED BY: R. DEROSS DATE: 02-21-06	TITLE: CABLE ASSEMBLY 9 SKT COMM. MICRO D 9 PIN D-SUB
		DRAFT WHERE APPLICABLE MUST REMAIN WITHIN DIMENSIONS			SEE CHART		APPROVED BY: R. DEROSS DATE: 02-21-06	MATERIAL NO. SD-83421-021	DOCUMENT NO. 1 OF 1
		THIS DRAWING CONTAINS INFORMATION THAT IS PROPRIETARY TO MOLEX INCORPORATED AND SHOULD NOT BE USED WITHOUT WRITTEN PERMISSION							