

Excellent Integrated System Limited

Stocking Distributor

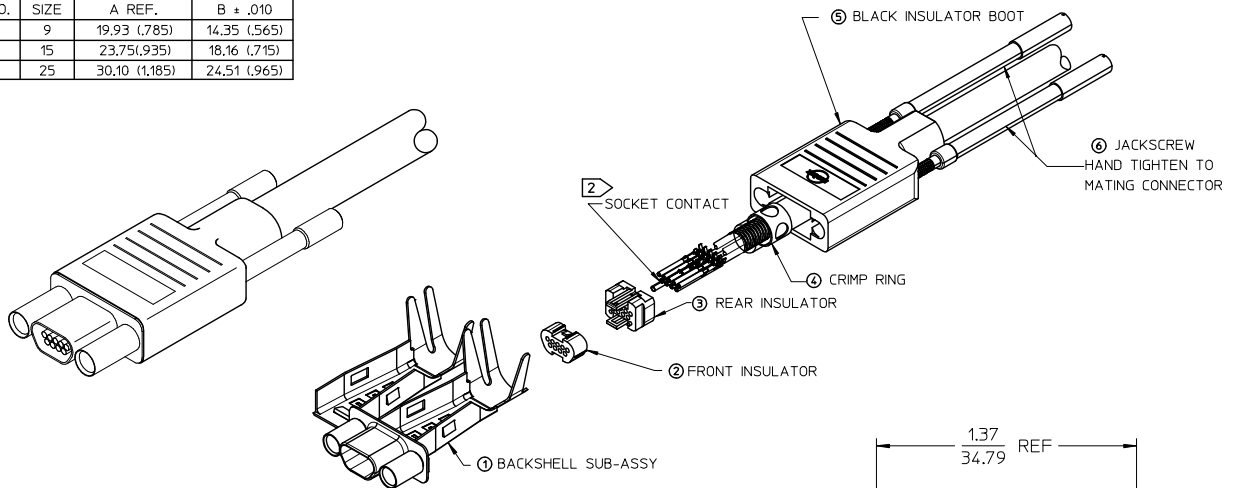
Click to view price, real time Inventory, Delivery & Lifecycle Information:

[Molex Connector Corporation](#)
[0834229014](#)

For any questions, you can email us directly:

sales@integrated-circuit.com

| MATERIAL NO. | ENGINEERING NO. | SIZE | A REF. | B ± .010 |
|--------------|-----------------|------|---------------|--------------|
| 834219014 | 83421-9014 | 9 | 19.93 (.785) | 14.35 (.565) |
| 834229014 | 83422-9014 | 15 | 23.75(.935) | 18.16 (.715) |
| 834249014 | 83424-9014 | 25 | 30.10 (1.185) | 24.51 (.965) |



| 7 | 1 | ASSEMBLY INSTRUCTIONS NOT SHOWN |
|------|------|-------------------------------------|
| 6 | 2 | 2-56 JACKSCREW UNDIPTED |
| 5 | 1 | RUBBER BOOT MICRO-D |
| 4 | 1 | CRIMP RING MICRO-D |
| 3 | 1 | REAR INSULATOR |
| 2 | 1 | FRONT INSULATOR |
| 1 | 1 | BACKSHELL SUB-ASSY. MICRO-D SIZE 15 |
| ITEM | ITEM | DESCRIPTION |

3. ROHS COMPLIANT

CONTACTS SOLD SEPARATELY. ORDER BY:
P/N 830009502 (2500 CONTACT REEL)
P/N 830009503 (50000 CONTACT REEL)
P/N 830000083 (LOOSE CONTACTS)

1. REFER TO PS-83421-001 FOR PRODUCT SPECIFICATION

NOTES: UNLESS OTHERWISE SPECIFIED

| ADDED LAYOUT VIEW EC NO: JG2014-0111 DRAWN BY: DRWINBARDEN CHKD: APPREBWOODMAN REV: N | DESCRIPTION 2013/07/16 2013/07/25 | QUALITY SYMBOLS ▽=0 ▽=0 | GENERAL TOLERANCES (UNLESS SPECIFIED) | | DIMENSION STYLE | | SCALE 2:1 | DESIGN UNITS INCH | THIRD ANGLE PROJECTION |
|---|---|-------------------------------|--|--------|---------------------------|-------------|---------------------|--|------------------------|
| | | | mm | INCH | IN/MM | DATE | | | |
| | | | 4 PLACES | ± .005 | ± .005 | DRAWN BY | 99/09/03 | CONNECTOR KIT, RECEPTACLE, W/2-56 JACKSCREWS molex | |
| | | | 3 PLACES | ± .005 | ± .005 | CHECKED BY | DATE | | |
| | | | 2 PLACES | ± .005 | ± .005 | HEB | 02/01/31 | | |
| | | | 1 PLACE | ± .005 | ± .005 | APPROVED BY | DATE | | |
| | | | 0 PLACE | ± .005 | ± .005 | RWD | 02/01/31 | DOCUMENT NO. SD-83421-002 | |
| | | | ANGULAR ±1/2° DRAFT WHERE APPLICABLE MUST REMAIN WITHIN DIMENSIONS | | MATERIAL NO. SEE CHART | | SHEET NO. 1 OF 1 | | |
| THIS DRAWING CONTAINS INFORMATION THAT IS PROPRIETARY TO MOLEX INCORPORATED AND SHOULD NOT BE USED WITHOUT WRITTEN PERMISSION | | | | | | | | | |

10 9 8 7 6 5 4 3 2 1

| MATERIAL NUMBER | ENGINEERING NUMBER |
|-----------------|--------------------|
| 834219101 | 83421-9101 |

CONNECTOR ASSEMBLY INSTRUCTIONS

1 SLIDE INSULATOR BOOT OVER CABLE.

2 SLIDE CRIMP RING OVER CABLE.
BRAIDED SHIELD FOLDS BACK OVER CRIMP RING.

3 STRIP CABLE PER STRIPPING INSTRUCTIONS. (SH 1&2)

4 CRIMP CONTACTS PER CRIMP INSTRUCTIONS. (SH2)
SEE 638522000 & 638622000 FOR APPLICATOR, TERMINATOR DIE AND CRIMP SPEC.
SEE 638114800 FOR HAND TOOL AND CRIMP SPEC.

5 INSERT CONTACTS INTO BACK OF REAR INSULATOR USING NEEDLE NOSE PLIERS WITH A 3/64in/1MM TIP (SPECIAL CARE MUST BE TAKEN NOT TO DAMAGE LOCKING WINGS).
PUSH CONTACT INTO REAR INSULATOR UNTIL "WINGS" ON CONTACT SNAP OPEN.
CONTACT SHOULD NOT EXTEND BEYOND THE BACK OF INSULATOR.
PLACE FRONT INSULATOR ONTO REAR INSULATOR ASSURING PROPER ALIGNMENT OF CONTACTS.
CONTINUE TO PUSH UNTIL FRONT AND REAR INSULATOR SNAP TOGETHER.
LIGHTLY PULL CRIMPED WIRE TO ENSURE TERMINAL HAS LOCKED INTO INSULATOR.
-WARNING PULLING TO HARD CAN DAMAGE CONTACT-

6 APPLY ADHESIVE LOCITE 416 OR EQUIVARIANT AROUND EACH WIRE AS SHOWN, WHERE WIRE ENTERS INSULATOR

7 MOUNT INSULATOR SUBASSEMBLY IN BACKSHELL SUBASSEMBLY PER ASSY INSTRUCTION. (SH2)

8 CLOSE BACKSHELL SUBASSEMBLY AROUND CABLE SHIELD PER INSTRUCTIONS. (SH 2)

9 CRIMP BACKSHELL TO METAL BRAID PER INSTRUCTIONS. (SH 2) SEE CRIMP SPEC.

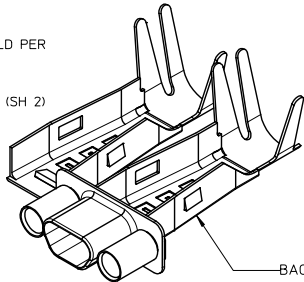
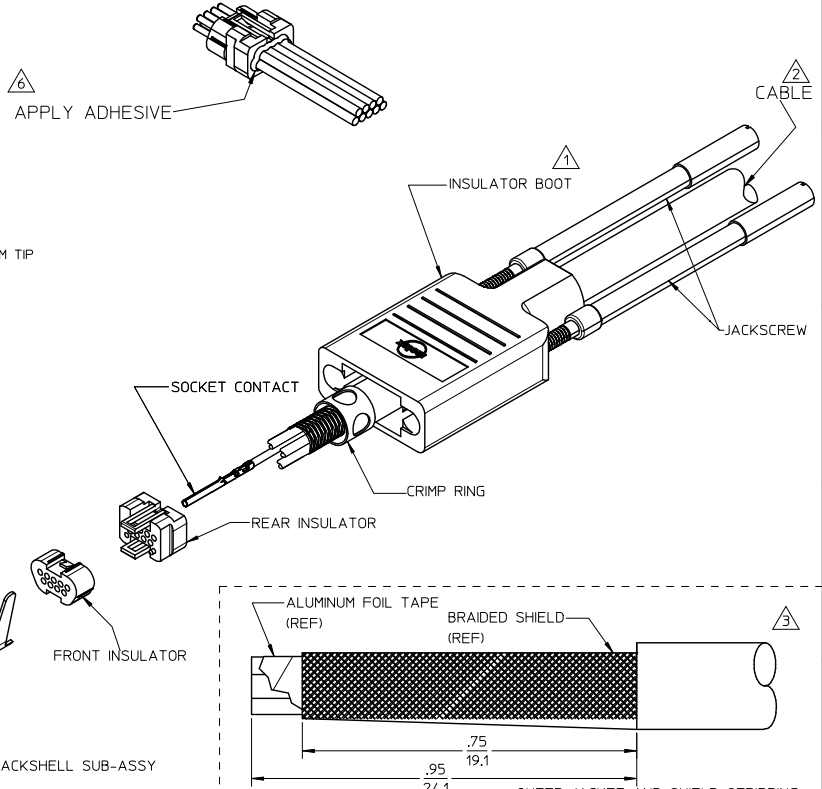
| | 9 POSITION | 15 POSITION | 25 POSITION |
|-------------|------------|-------------|-------------|
| MOLEX PRESS | 622008900 | 622019800 | 622020000 |
| CRIMP KIT | 622009000 | 622019900 | 622020100 |

10 SLIDE BOOT OVER BACKSHELL SUBASSEMBLY.

11 INSERT JACKSCREWS INTO BOOT.

12 USE WITH MOLEX TERMINALS 830009502, 830009503 OR 830000083

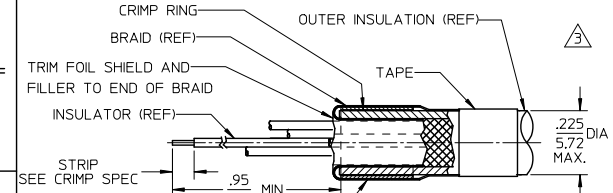
9 POSITION SHOWN



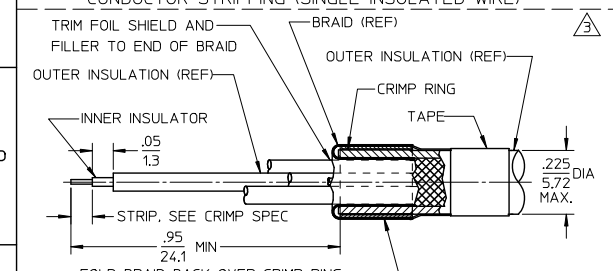
| ADDED VIEW & NOTE EC NO: IPG2014-1862 DRAWN BY: GGUSTAFSON 2014/04/25 CHKD: BWOODMAN APPR: BWOODMAN 2014/05/09 REV DESCRIPTION | QUALITY SYMBOLS ▽=0 ▽=0 | GENERAL TOLERANCES (UNLESS SPECIFIED) <table border="1"> <tr> <th></th> <th>mm</th> <th>INCH</th> </tr> <tr> <td>4 PLACES</td> <td>±---</td> <td>±---</td> </tr> <tr> <td>3 PLACES</td> <td>±---</td> <td>±---</td> </tr> <tr> <td>2 PLACES</td> <td>±---</td> <td>±---</td> </tr> <tr> <td>1 PLACE</td> <td>±---</td> <td>±---</td> </tr> <tr> <td>ANGULAR</td> <td>±---</td> <td>°</td> </tr> </table> | | mm | INCH | 4 PLACES | ±--- | ±--- | 3 PLACES | ±--- | ±--- | 2 PLACES | ±--- | ±--- | 1 PLACE | ±--- | ±--- | ANGULAR | ±--- | ° | DIMENSION STYLE IN/MM DRAWN BY: GGUSTAFSON DATE: 2014/03/26 CHECKED BY: DATE: | SCALE 2:1 DESIGN UNITS INCH | THIRD ANGLE PROJECTION TITLE: ASSEMBLY INSTRUCTIONS COMMERCIAL MICRO D CONNECTOR APPROVED BY: BWOODMAN DATE: 2014/04/04 MATERIAL NO. SEE CHART DOCUMENT NO. SD-83421-040 |
|--|--------------------------------------|--|------|----|------|----------|------|------|----------|------|------|----------|------|------|---------|------|------|---------|------|---|---|--|---|
| | | mm | INCH | | | | | | | | | | | | | | | | | | | | |
| | 4 PLACES | ±--- | ±--- | | | | | | | | | | | | | | | | | | | | |
| | 3 PLACES | ±--- | ±--- | | | | | | | | | | | | | | | | | | | | |
| 2 PLACES | ±--- | ±--- | | | | | | | | | | | | | | | | | | | | | |
| 1 PLACE | ±--- | ±--- | | | | | | | | | | | | | | | | | | | | | |
| ANGULAR | ±--- | ° | | | | | | | | | | | | | | | | | | | | | |
| MOLEX INCORPORATED | | | | | | | | | | | | | | | | | | | | | | | |
| DRAFT WHERE APPLICABLE MUST REMAIN WITHIN DIMENSIONS | | | | | | | | | | | | | | | | | | | | | | | |
| THIS DRAWING CONTAINS INFORMATION THAT IS PROPRIETARY TO MOLEX INCORPORATED AND SHOULD NOT BE USED WITHOUT WRITTEN PERMISSION | | | | | | | | | | | | | | | | | | | | | | | |

9 8 7 6 5 4 3 2 1

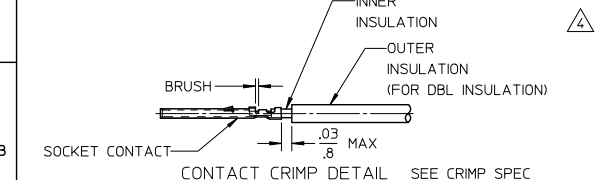
10 9 8 7 6 5 4 3 2 1



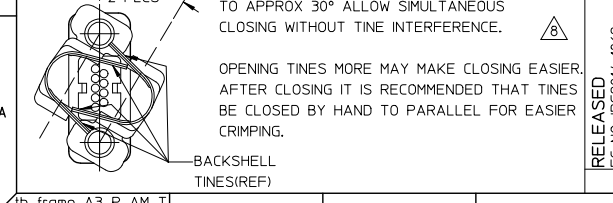
FOLD BRAID BACK OVER CRIMP RING AND COMB EVENLY 360° AROUND RING, PLACE ADHESIVE TAPE AROUND BRAID AS SHOWN
CONDUCTOR STRIPPING (SINGLE INSULATED WIRE)



FOLD BRAID BACK OVER CRIMP RING AND COMB EVENLY 360° AROUND RING, PLACE ADHESIVE TAPE AROUND BRAID AS SHOWN.
CONDUCTOR STRIPPING DOUBLE INSULATED WIRE

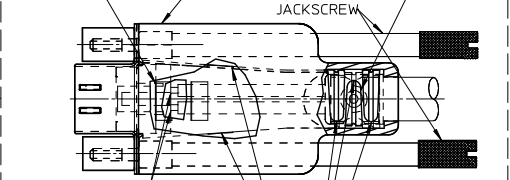


CONTACT CRIMP DETAIL SEE CRIMP SPEC



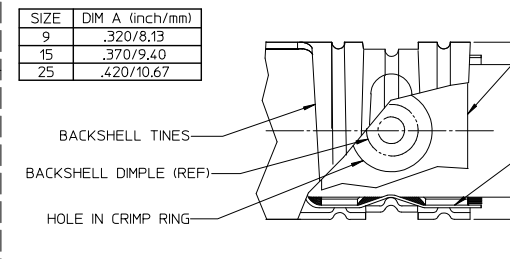
OPEN BOTH BACKSHELL HALVES TO APPROX 30° ALLOW SIMULTANEOUS CLOSING WITHOUT TINE INTERFERENCE.
OPENING TINES MORE MAY MAKE CLOSING EASIER. AFTER CLOSING IT IS RECOMMENDED THAT TINES BE CLOSED BY HAND TO PARALLEL FOR EASIER CRIMPING.

NOTES: INSULATOR SUBASSEMBLY MUST SIT AGAINST FRONT SHELL TO ENSURE RETENTION WHEN BACKSHELLS ARE CLOSED.
HOLES IN CRIMP RING MUST ALIGN WITH DOMPLES IN BACKSHELLS FOR CRIMP TO RETAIN CABLE.

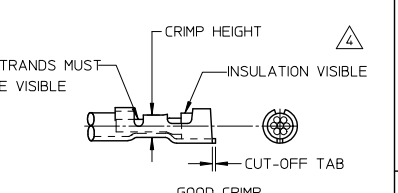


CONTACTS FLUSH TO BELOW INSULATOR USING NEEDLE NOSE PLIERS
LATCH BOTH BACKSHELLS USING BOTH SIDE LATCHES
AFTER CRIMPING, TINES SHOULD ALIGN IN THE GROOVE OF THE OPPOSING TINE AS SHOWN

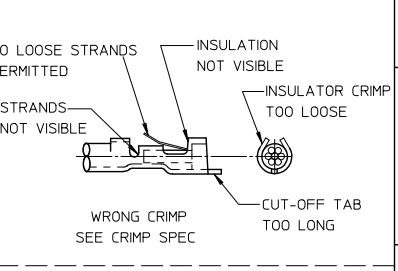
| SIZE | DIM A (inch/mm) |
|------|-----------------|
| 9 | .320/8.13 |
| 15 | .370/9.40 |
| 25 | .420/10.67 |



NOTE: DIMPLES IN BACKSHELLS MUST BE ALIGNED WITH HOLES IN CRIMP RING FOR PROPER CABLE RETENTION
COMB BRAID EVENLY 360° FOR PROPER SHIELDING AND CABLE RETENTION. TRIM EXCESS BRAID FLUSH TO BACKSHELL AFTER CRIMPING



NO LOOSE STRANDS PERMITTED
STRANDS NOT VISIBLE
INSULATOR CRIMP TOO LOOSE
CUT-OFF TAB TOO LONG



RELEASED EC NO: IPG2014-1862 2014/04/25
CHKD: DRPMINGGUSTAFSON 2014/05/09
APPR: BWOODMAN

QUALITY SYMBOLS
▽=0
▽=0

| GENERAL TOLERANCES (UNLESS SPECIFIED) | |
|---------------------------------------|------------------|
| | mm INCH |
| 4 PLACES | ± .005 ± .0002 |
| 3 PLACES | ± .004 ± .00015 |
| 2 PLACES | ± .003 ± .0001 |
| 1 PLACE | ± .002 ± .000075 |
| ANGULAR ± .0001 | |

DIMENSION STYLE IN/MM
DRAWN BY GGUSTAFSON DATE 2014/03/26
CHECKED BY DATE
APPROVED BY BWOODMAN DATE 2014/04/04
MATERIAL NO. SEE CHART
DOCUMENT NO. SD-83421-040

SCALE 2:1 DESIGN UNITS INCH THIRD ANGLE PROJECTION
TITLE ASSEMBLY INSTRUCTIONS COMMERCIAL MICRO D CONNECTOR
MOLEX INCORPORATED
SHEET NO. 2 OF 2
THIS DRAWING CONTAINS INFORMATION THAT IS PROPRIETARY TO MOLEX INCORPORATED AND SHOULD NOT BE USED WITHOUT WRITTEN PERMISSION

9 8 7 6 5 4 3 2 1