



Excellent Integrated System Limited

Stocking Distributor

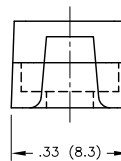
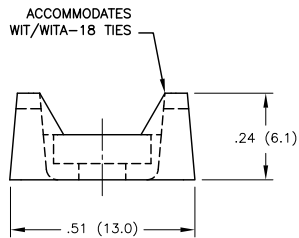
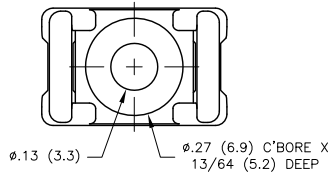
Click to view price, real time Inventory, Delivery & Lifecycle Information:

[Essentra Components \(formerly Richco, Inc.\)](#)
[FTH-28RS-01](#)

For any questions, you can email us directly:
sales@integrated-circuit.com

MOUNTING RIVETS FOR THE FTH-28RS		
RIVET NO.	PANEL THICKNESS RANGE	MOUNTING HOLE DIA.
SR-3035	UP TO .034 (0.9)	.122-.126 (3.1-3.2)
SR-3045	.034-.073 (0.9-1.9)	
SR-3055	.073-.113 (1.9-2.9)	
SR-3065	.113-.152 (2.9-3.9)	
SR-3075	.152-.191 (3.9-4.9)	
SR-3080	.172-.211 (4.4-5.4)	
SR-3090	.211-.250 (5.4-6.4)	
SR-3100	.250-.290 (6.4-7.4)	

#4 (M3) SCREW TYPES FOR THE FTH-28RS TRUSS, PAN, BINDING, OR ROUND HEAD
--



- NOTES:
- MATERIAL: NYLON 6/6 UL94 V-2 (RMS-01).
 -NYLON 6/6 UL94 V-0 (RMS-19) AVAILABLE BY SPECIAL ORDER. TO ORDER REPLACE "-01" WITH "-19".
 -UV STABILIZED NYLON (RMS-46), COLOR BLACK, AVAILABLE BY SPECIAL ORDER ONLY. TO ORDER REPLACE "-01" WITH "-UVB"
 - COLOR: NATURAL.
 - TIE HOLDER TO ACCEPT EITHER A 3XXX SERIES RIVET OR A #4 (M3) SCREW.

F SEE CO 200570 FOR CHANGES SK 08.04.10		TITLE: FLAT TIE HOLDER		DWG IN IN (MM) FINAL		PRINT TYPE CA	
E SEE CO 200446 FOR CHANGES SK 09.24.09		TOLERANCES UNLESS NOTED .XX=±.010 .XXX=±.005 FRAC=±1/64 ANG=±1°	FILE # FTH-28RS	DWN: R.D.G.	APP:	PART # FTH-28RS-01	PRINT TYPE CA
D SEE ECN #1124 FOR CHANGES SK 01.24.06			MAT'L: SEE NOTES	DT: 05/16/01	DT:		
C UPDATED TABLE RG 02.12.02		RE: RICHCO, INC.		RICHCO INC. PO BOX 804238, CHICAGO, 60680 (773) 539-4060			
B .33 WAS .316 RG 09.26.01							
A RELEASED FOR PRODUCTION RG 09.26.01							
REV DESCRIPTION ENGR DATE							