



Excellent Integrated System Limited

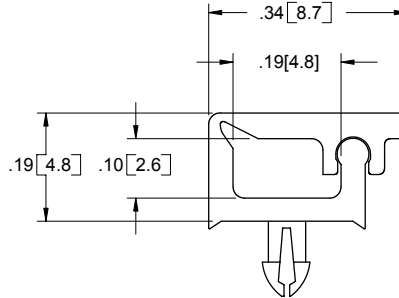
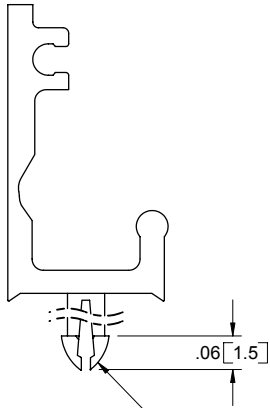
Stocking Distributor

Click to view price, real time Inventory, Delivery & Lifecycle Information:

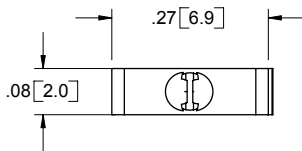
[Essentra Components \(formerly Richco, Inc.\)](#)
[MWSLT-1-19](#)

For any questions, you can email us directly:
sales@integrated-circuit.com

PART NUMBER	MATERIAL	COLOR	PANEL THICKNESS
MWSLT-1-01	NYLON 6/6 (RMS-01)	NATURAL	.063 (1.6)
MWSLT-1-19	FLAME RET. NYLON (RMS-19)		
MWSLT1-1-01	NYLON 6/6 (RMS-01)		.093 (2.4)
MWSLT1-1-19	FLAME RET. NYLON (RMS-19)		



SNAP LOCKS IN A .067±.002
[1.7±0.05] DIA. HOLE, IN A
PANEL THICKNESS INDICATED



TITLE: MICRO WIRE SADDLE LOCKING TOP			DWG IN IN[MM]		FINAL	
D	SEE ECN #626 FOR CHANGES	SM 05/12/03	FILE #: MWSLT	DWN: DLC	APP: D.L.C.	PART #
C	SEE ECN #475 FOR CHANGES	SM 10/01/02	SHEET: 1 OF 1 SHEET SIZE: A	DT: 06/05/02	CHKD: R.D.G.	
B	REVISED CUSTOMER TO RICHCO INC	DLC 07/08/02	RE: RICHCO, INC.	RICHCO, INC.		SEE TABLE
A	RELEASED TO PRODUCTION	DLC 07/01/02		ENG@RICHCO-INC.COM (773) 539-4060		
REV.	DESCRIPTION	ENGR. DATE			CA	