



Excellent Integrated System Limited

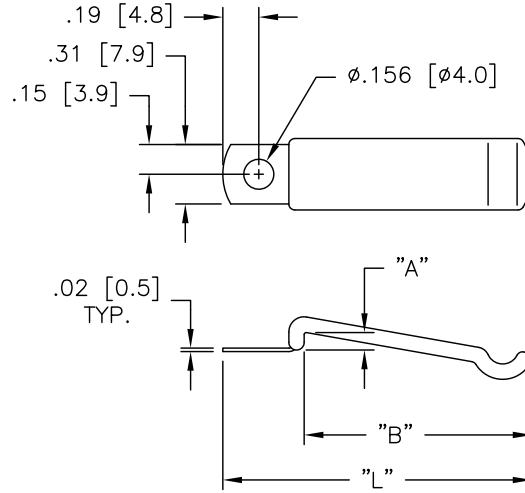
Stocking Distributor

Click to view price, real time Inventory, Delivery & Lifecycle Information:

[Essentra Components \(formerly Richco, Inc.\)](#)
[STCV-1](#)

For any questions, you can email us directly:
sales@integrated-circuit.com

PART NO.	"L" REF.	"A" REF.	"B" REF.
STCV-1	1.61 [40.9]	.09 [2.3]	1.19 [30.2]



NOTES:

1. MATERIAL: STAINLESS STEEL SAE 30301 (RMS-197)
2. COATING: PVC (RMS-118), 1/32 NOMINAL THICKNESS. (THICKNESS CAN VARY)
3. COLOR: BLACK

D		DK		TOLERANCES UNLESS NOTED		FILE #		DWN:		DT:		DWG IN IN (MM)		PRINT	
CHANGED COATING MATERIAL, CO 200534		05.26.10		UNLESS NOTED		STCV		SM		05/06/03		FINAL		TYPE	
SEE CO 200466 FOR CHANGES		SK 03.04.10		.XX=±.015		MAT'L: SEE NOTES		BR		ENGR: DJZ		PART #		CA	
SEE ECN #927 FOR CHANGES		SK 01.31.05		.XXX=±.005		RE: RICHCO, INC.		RICHCO INC.		PO BOX 804238, CHICAGO, 60680		SEE TABLE			
RELEASED FOR PRODUCTION		SM 05.19.03		FRAC=±1/64				(773) 539-4060							
DESCRIPTION		ENGR DATE		ANG=±1°											