

Excellent Integrated System Limited

Stocking Distributor

Click to view price, real time Inventory, Delivery & Lifecycle Information:

[IXYS Corporation](#)

[IXFH12N90](#)

For any questions, you can email us directly:

sales@integrated-circuit.com



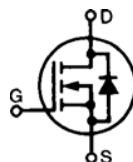
HiPerFET™ Power MOSFETs

N-Channel Enhancement Mode
High dv/dt, Low t_{rr} , HDMOS™ Family

IXFH/IXFM 10 N90
IXFH/IXFM 12 N90
IXFH/IXFT 13 N90

V_{DSS}	I_{D25}	$R_{DS(on)}$
900 V	10 A	1.1 Ω
900 V	12 A	0.9 Ω
900 V	13 A	0.8 Ω

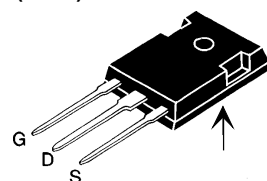
$t_{rr} \leq 250$ ns



Symbol	Test Conditions	Maximum Ratings	
V_{DSS}	$T_J = 25^\circ\text{C}$ to 150°C	900	V
V_{DGR}	$T_J = 25^\circ\text{C}$ to 150°C ; $R_{GS} = 1\text{ M}\Omega$	900	V
V_{GS}	Continuous	± 20	V
V_{GSM}	Transient	± 30	V
I_{D25}	$T_C = 25^\circ\text{C}$	10N90	10 A
		12N90	12 A
		13N90	13 A
I_{DM}	$T_C = 25^\circ\text{C}$, pulse width limited by T_{JM}	10N90	40 A
		12N90	48 A
		13N90	52 A
I_{AR}	$T_C = 25^\circ\text{C}$	10N90	10 A
		12N90	12 A
		13N90	13 A
E_{AR}	$T_C = 25^\circ\text{C}$	30	mJ
dv/dt	$I_S \leq I_{DM}$, $di/dt \leq 100\text{ A}/\mu\text{s}$, $V_{DD} \leq V_{DSS}$, $T_J \leq 150^\circ\text{C}$, $R_G = 2\ \Omega$	5	V/ns
P_D	$T_C = 25^\circ\text{C}$	300	W
T_J		-55 ... +150	$^\circ\text{C}$
T_{JM}		150	$^\circ\text{C}$
T_{stg}		-55 ... +150	$^\circ\text{C}$
T_L	1.6 mm (0.062 in.) from case for 10 s	300	$^\circ\text{C}$
M_d	Mounting torque	1.13/10	Nm/lb.in.
Weight		TO-204 = 18 g, TO-247 = 6 g	

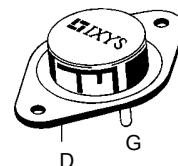
Symbol	Test Conditions	Characteristic Values ($T_J = 25^\circ\text{C}$, unless otherwise specified)		
		min.	typ.	max.
V_{DSS}	$V_{GS} = 0\text{ V}$, $I_D = 3\text{ mA}$	900		V
$V_{GS(th)}$	$V_{DS} = V_{GS}$, $I_D = 4\text{ mA}$	2.0		V
I_{GSS}	$V_{GS} = \pm 20\text{ V}_{DC}$, $V_{DS} = 0$			± 100 nA
I_{DSS}	$V_{DS} = V_{DSS}$, $V_{GS} = 0\text{ V}$	$T_J = 25^\circ\text{C}$		25 μA
		$T_J = 125^\circ\text{C}$		1 mA
$R_{DS(on)}$	$V_{GS} = 10\text{ V}$, $I_D = 0.5 \cdot I_{D25}$	10N90		1.1 Ω
		12N90		0.9 Ω
		13N90		0.8 Ω
	Pulse test, $t \leq 300\ \mu\text{s}$, duty cycle $d \leq 2\%$			

TO-247 AD (IXFH)



(TAB)

TO-204 AA (IXFM)



TO-268 (IXFT)



G = Gate, D = Drain,
S = Source, TAB = Drain

Features

- International standard packages
- Low $R_{DS(on)}$ HDMOS™ process
- Rugged polysilicon gate cell structure
- Unclamped Inductive Switching (UIS) rated
- Low package inductance
 - easy to drive and to protect
- Fast intrinsic Rectifier

Applications

- DC-DC converters
- Synchronous rectification
- Battery chargers
- Switched-mode and resonant-mode power supplies
- DC choppers
- AC motor control
- Temperature and lighting controls
- Low voltage relays

Advantages

- Easy to mount with 1 screw (TO-247) (isolated mounting screw hole)
- Space savings
- High power density



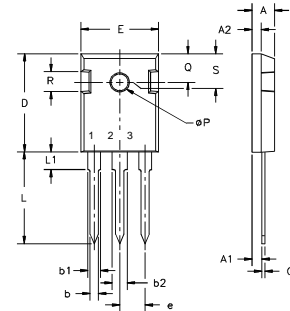
IXFH 10N90
IXFM 10N90

IXFH 12N90
IXFM 12N90

IXFH 13N90
IXFT 13N90

Symbol	Test Conditions	Characteristic Values ($T_J = 25^\circ\text{C}$, unless otherwise specified)		
		min.	typ.	max.
g_{fs}	$V_{DS} = 10\text{ V}$; $I_D = 0.5 \cdot I_{D25}$, pulse test	6	12	S
C_{iss}	$V_{GS} = 0\text{ V}$, $V_{DS} = 25\text{ V}$, $f = 1\text{ MHz}$	4200		pF
C_{oss}		315		pF
C_{rss}		90		pF
$t_{d(on)}$	$V_{GS} = 10\text{ V}$, $V_{DS} = 0.5 \cdot V_{DSS}$, $I_D = 0.5 \cdot I_{D25}$ $R_G = 2\ \Omega$ (External)	18	50	ns
t_r		12	50	ns
$t_{d(off)}$		51	100	ns
t_f		18	50	ns
$Q_{g(on)}$	$V_{GS} = 10\text{ V}$, $V_{DS} = 0.5 \cdot V_{DSS}$, $I_D = 0.5 \cdot I_{D25}$	123	155	nC
Q_{gs}		27	45	nC
Q_{gd}		49	80	nC
R_{thJC}	(IXFH/IXFM)	0.42		K/W
R_{thCK}		0.25		K/W

TO-247 AD (IXFH) Outline

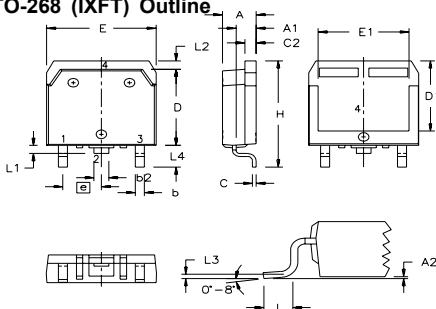


Terminals: 1 - Gate
3 - Source
2 - Drain
Tab - Drain

Dim.	Millimeter		Inches	
	Min.	Max.	Min.	Max.
A	4.7	5.3	.185	.209
A ₁	2.2	2.54	.087	.102
A ₂	2.2	2.6	.059	.098
b	1.0	1.4	.040	.055
b ₁	1.65	2.13	.065	.084
b ₂	2.87	3.12	.113	.123
C	.4	.8	.016	.031
D	20.80	21.46	.819	.845
E	15.75	16.26	.610	.640
e	5.20	5.72	0.205	0.225
L	19.81	20.32	.780	.800
L1		4.50		.177
∅P	3.55	3.65	.140	.144
Q	5.89	6.40	0.232	0.252
R	4.32	5.49	.170	.216
S	6.15 BSC		242 BSC	

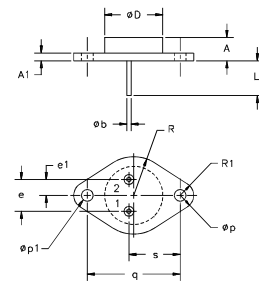
Source-Drain Diode		Characteristic Values ($T_J = 25^\circ\text{C}$, unless otherwise specified)		
Symbol	Test Conditions	min.	typ.	max.
I_S	$V_{GS} = 0\text{ V}$	10N90 12N90 13N90		10 A 12 A 13 A
I_{SM}	Repetitive; pulse width limited by T_{JM}	10N90 12N90 13N90		40 A 48 A 52 A
V_{SD}	$I_F = I_S$, $V_{GS} = 0\text{ V}$, Pulse test, $t \leq 300\ \mu\text{s}$, duty cycle $d \leq 2\%$			1.5 V
t_{rr}	$I_F = I_S$, $T_J = 25^\circ\text{C}$ $-di/dt = 100\text{ A}/\mu\text{s}$, $T_J = 125^\circ\text{C}$ $V_R = 100\text{ V}$			250 ns 400 ns
Q_{RM}		$T_J = 25^\circ\text{C}$ $T_J = 125^\circ\text{C}$	1 2	
I_{RM}		$T_J = 25^\circ\text{C}$ $T_J = 125^\circ\text{C}$	10 15	A A

TO-268 (IXFT) Outline



SYM	INCHES		MILLIMETERS	
	MIN	MAX	MIN	MAX
A	.193	.201	4.90	5.10
A1	.106	.114	2.70	2.90
A2	.001	.010	0.02	0.25
b	.045	.057	1.15	1.45
b2	.075	.083	1.90	2.10
C	.016	.026	0.40	0.65
C2	.057	.063	1.45	1.60
D	.543	.551	13.80	14.00
D1	.498	.500	12.40	12.70
E	.624	.632	15.85	16.05
E1	.524	.535	13.30	13.60
e	.215 BSC		5.45 BSC	
H	.736	.752	18.70	19.10
L	.094	.106	2.40	2.70
L1	.047	.055	1.20	1.40
L2	.039	.045	1.00	1.15
L3	.010 BSC		0.25 BSC	
L4	.150	.161	3.80	4.10

TO-204 AA (IXFM) Outline



Pins 1 - Gate 2 - Source
Case - Drain

Dim.	Millimeter		Inches	
	Min.	Max.	Min.	Max.
A	6.4	11.4	.250	.450
A1		3.42		.135
∅b	.97	1.09	.038	.043
∅D	22.22		.875	
e	10.67	11.17	.420	.440
e1	5.21	5.71	.205	.225
L	7.93		.312	
∅p	3.84	4.19	.151	.165
∅p1	3.84	4.19	.151	.165
q	30.15 BSC		1.187 BSC	
R	13.33		.525	
R1	4.77		.188	
s	16.64	17.14	.655	.675

IXYS reserves the right to change limits, test conditions, and dimensions.



IXFH 10N90
IXFM 10N90

IXFH 12N90
IXFM 12N90

IXFH 13N90
IXFT 13N90

Fig. 1. Output Characteristics

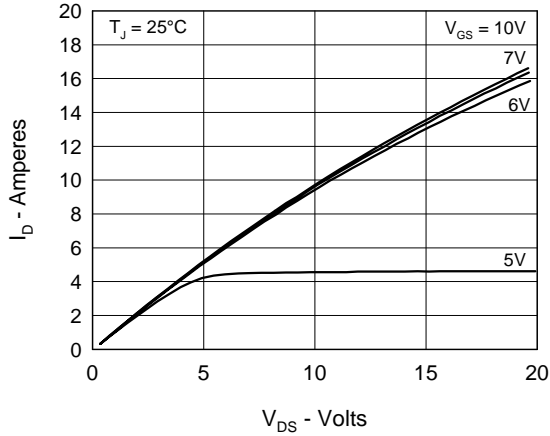


Fig. 2. Input Admittance

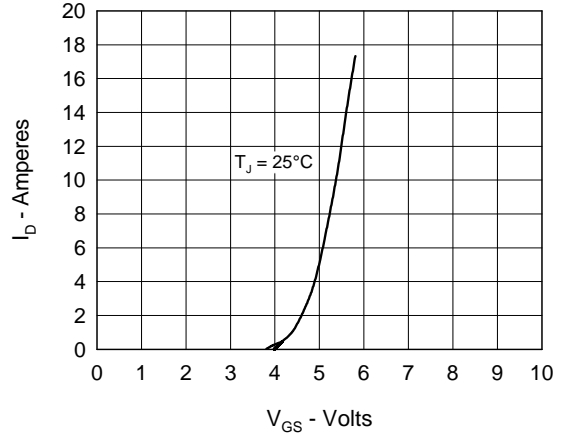


Fig. 3. $R_{DS(on)}$ vs. Drain Current

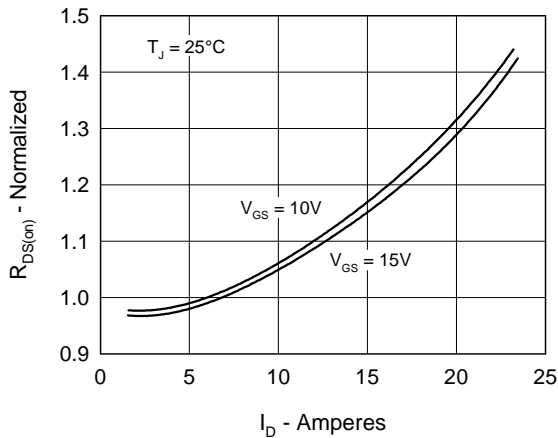


Fig. 4. Temperature Dependence of Drain to Source Resistance

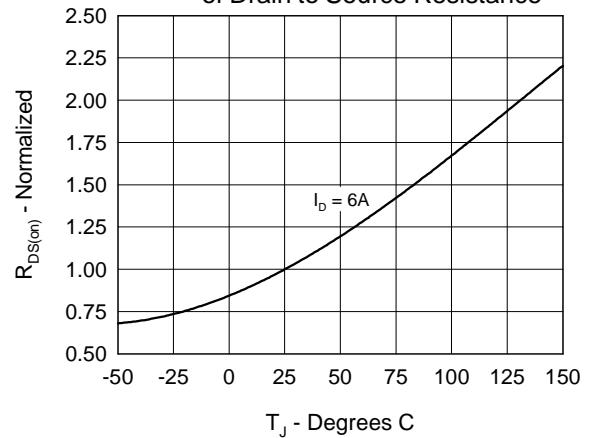


Fig. 5. Drain Current vs. Case Temperature

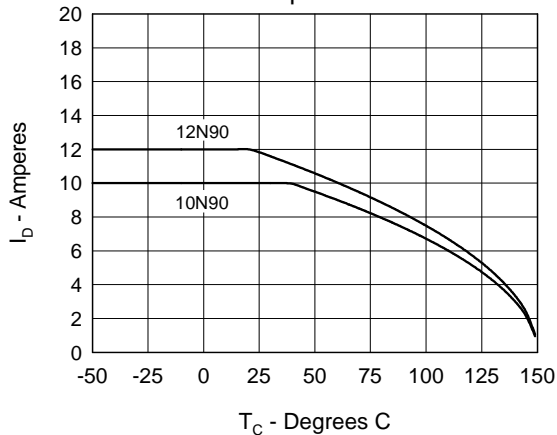
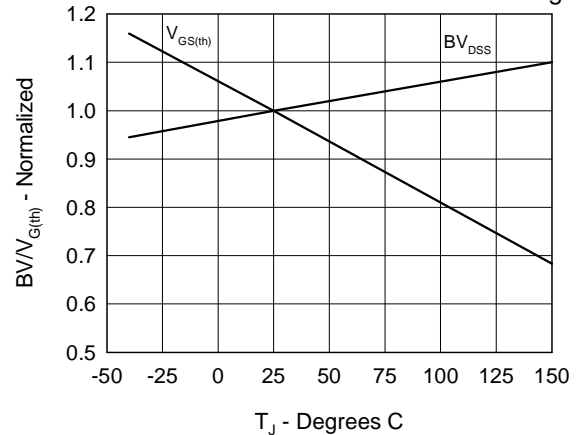


Fig. 6. Temperature Dependence of Breakdown and Threshold Voltage





IXFH 10N90
IXFM 10N90

IXFH 12N90
IXFM 12N90

IXFH 13N90
IXFT 13N90

Fig.7. Gate Charge Characteristic Curve

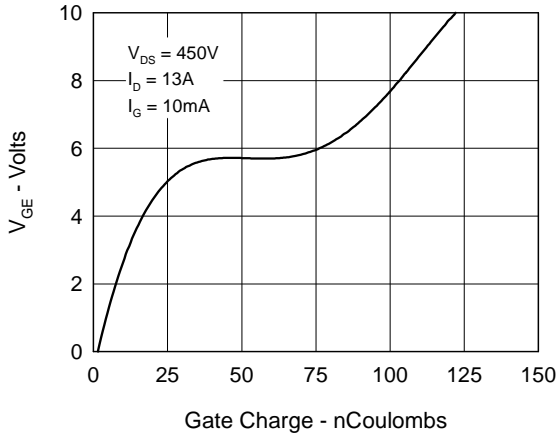


Fig.8. Capacitance Curves

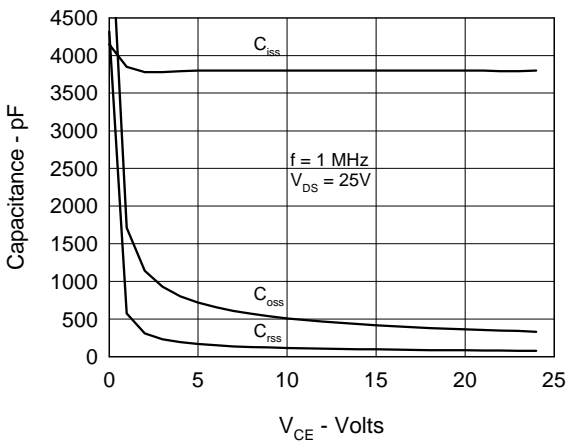


Fig.9. Source Current vs. Source to Drain Voltage

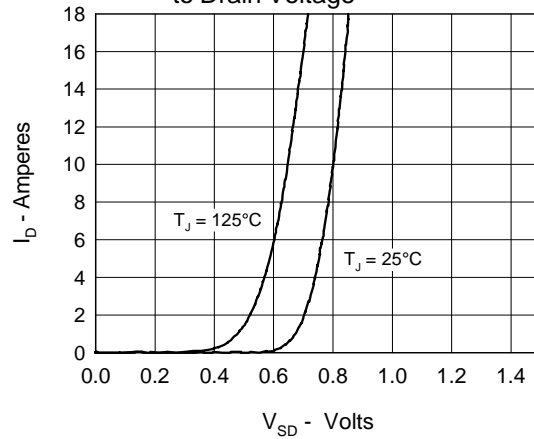
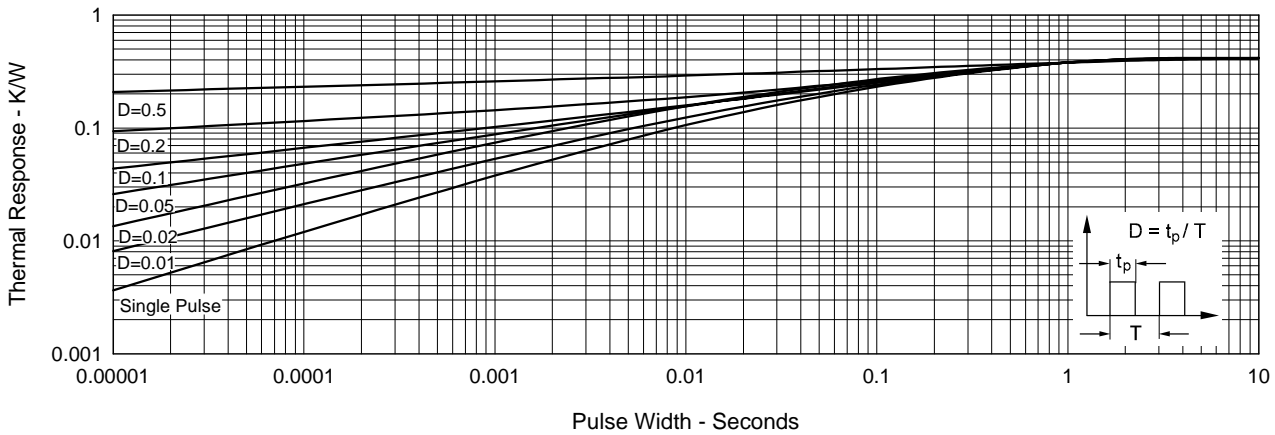


Fig.10. Transient Thermal Impedance



IXYS reserves the right to change limits, test conditions, and dimensions.

IXYS MOSFETs and IGBTs are covered by one or more of the following U.S. patents:

4,835,592	4,881,106	5,017,508	5,049,961	5,187,117	5,486,715	6,306,728B1
4,850,072	4,931,844	5,034,796	5,063,307	5,237,481	5,381,025	