

Excellent Integrated System Limited

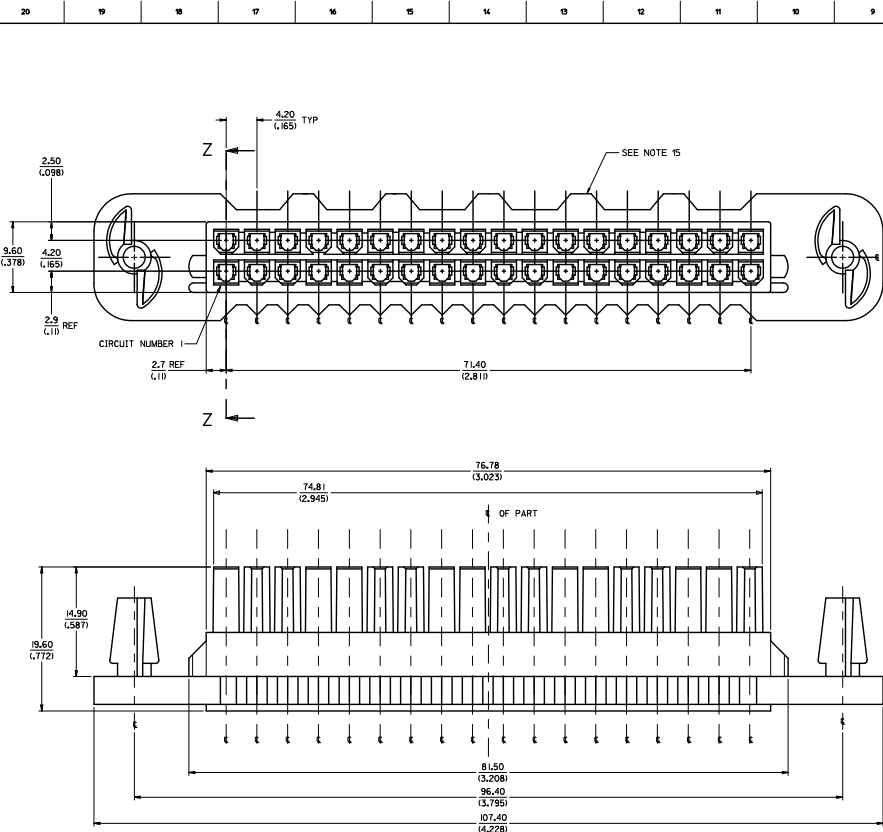
Stocking Distributor

Click to view price, real time Inventory, Delivery & Lifecycle Information:

[Molex Connector Corporation](#)
[0437600001](#)

For any questions, you can email us directly:

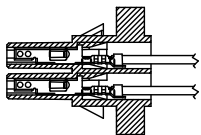
sales@integrated-circuit.com



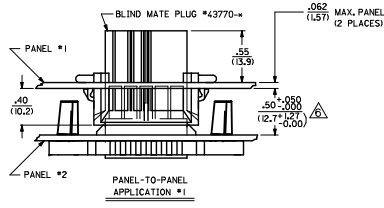
NOTES:

- MATERIAL:
NYLON, 94V-2, COLOR: NATURAL (WHITE).
- FINISH: NONE
- PRODUCT SPECIFICATION: PS-43759-0001
- PACKAGING SPECIFICATION: PK-40873-0134
- PART MATES WITH MINI-FIT B.M.I. HEADER #43759, 45567 OR 43693, AND B.M. PLUG # 43770.
- A MAXIMUM TOLERANCE OF .050/(1.27) ALLOWS FOR 2 POINTS OF ELECTRICAL CONTACT, A MAXIMUM TOLERANCE OF .020/(0.51) ALLOWS FOR 4 POINTS OF CONTACT.
- THIS CONNECTOR ALLOWS FOR .050/(1.27) MAX. MISALIGNMENT IN ANY DIRECTION.
- CONNECTOR ASSEMBLIES ARE NOT TO BE MATED OR UNMATED WHILE CIRCUITS ARE LIVE.
- THIS PART IS INTENDED FOR ONE PANEL INSERTION ONLY. REMOVAL AND RE-INSERTION CAN DAMAGE THE MOUNTING SPIRALS.
- PANEL SHOULD BE PUNCHED IN THE DIRECTION OF CONNECTOR INSERTION.
- BOTH SPIRALS SHOULD BE INSERTED INTO THE PANEL AT THE SAME TIME. ROCKING THE PART INTO PLACE MAY CAUSE SPIRAL DAMAGE.
- IF THIS PRODUCT IS STORED IN AN ENVIRONMENT WITH A RELATIVE HUMIDITY OF LESS THAN 50%, MOISTURE MUST BE ADDED. REFER TO TECHNICAL ADVISORY AS-45499-002 FOR INSTRUCTIONS.
- PART IS FOR USE WITH 5556 OR 44476 SERIES TERMINALS.
- THIS DIMENSION TO BE USED FOR ALIGNMENT OF THE MATING CONNECTOR.
- PART MAY OR MAY NOT HAVE OPTIONAL RIBS.
- THIS PART IS NOT INTENDED TO PROVIDE ANY ALIGNMENT OF CUSTOMER COMPONENTS OR MODULES, SUCH AS POWER SUPPLIES AND CHASSIS.
- WIRES ARE TO BE DRESSED IN SUCH A MANNER TO ALLOW THE TERMINALS TO FLOAT FREELY IN THE POCKET.
- THIS PART CONFORMS TO CLASS B REQUIREMENTS OF COSMETIC SPECIFICATION PS-45499-002.

QUALITY SYMBOLS	GENERAL TOLERANCES (UNLESS SPECIFIED)		DIMENSION STYLE		SCALE	DESIGN UNITS	THIRD ANGLE PROJECTION
	mm	INCH	MM/IN	MM/IN			
∇=0	4 PLACES ±---	±---	DRAWN BY	DATE	4:1	METRIC	PANEL MOUNT RECEPTACLE 36-CIRCUIT BLIND MATE MINI-FIT SERIES
∇=0	3 PLACES ±---	±.015	MANLAPAZ	06/18/97			
∇=0	2 PLACES ±0.38	±---	CHECKED BY	DATE	MOLEX INCORPORATED		
∇=0	1 PLACE ±---	±---	MBANDURA	06/18/97			
ANGULAR ±1/2°			APPROVED BY	DATE	SHEET NO. 1 OF 2		
DRAFT WHERE APPLICABLE MUST REMAIN WITHIN DIMENSIONS			FSM TH	2012/05/04			
UPDATE HSG NOTE EC NO. LEF202-2787 20/02/24 ORNINGWEN CHKD BY CHOKO BELL 20/02/24 APPROVED BY LEUNG 20/02/04 EIS COMPANY			MATERIAL NO. 43760-0001		DOCUMENT NO. SD-43760-001		SHEET NO. 1 OF 2

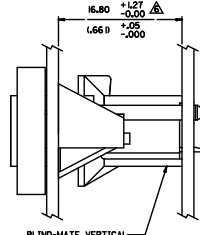


SECTION 'Z-Z'
TERMINAL ORIENTATION



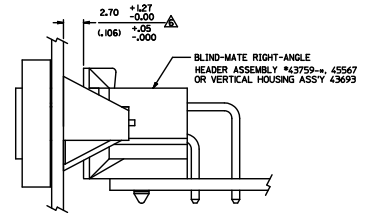
PANEL #1
PANEL #2

PANEL-TO-PANEL APPLICATION #1



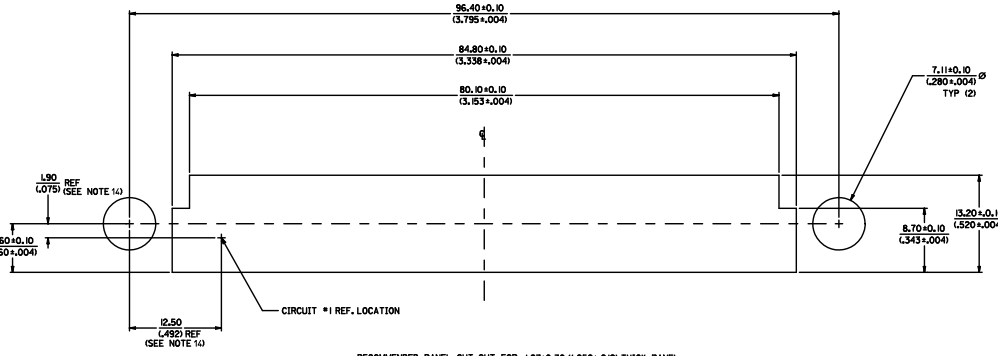
BLIND-MATE VERTICAL
HEADER ASS'Y.

PANEL-TO-P.C.BOARD
APPLICATION #2

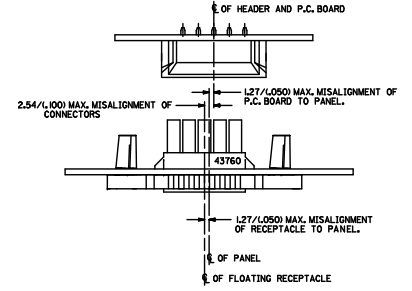


BLIND-MATE RIGHT-ANGLE
HEADER ASSEMBLY #43759-4, 45567
OR VERTICAL HOUSING ASSY 43693

PANEL-TO-P.C.BOARD
APPLICATION #3



RECOMMENDED PANEL CUT-OUT FOR L27+0.30/L050+0.02 THICK PANEL



ALIGNMENT TOLERANCES FOR L27/L050 MAX. BOARD-TO-PANEL MISALIGNMENT
(L27/L050 RECEPTACLE FLOAT)

SEE SHEET 1 EC NO. 043760-2787 DRAWN BY: DR. MANJUNATH CHKD BY: CH. K. BELL APPROVED BY: [Signature] DATE: 20/07/24 20/07/24 20/07/24	QUALITY SYMBOLS	GENERAL TOLERANCES (UNLESS SPECIFIED)	DIMENSION STYLE	SCALE	DESIGN UNITS	THIRD ANGLE PROJECTION
	∇=0 ∇=0 ∇=0	mm INCH 4 PLACES ±.015 3 PLACES ±.015 2 PLACES ±0.38 1 PLACE ±.015 ANGULAR ±1/2°	MM/IN DRAWN BY: MANI APAZ DATE: 06/18/19 CHECKED BY: MBANDURA DATE: 06/18/19 APPROVED BY: FSMITH DATE: 2012/05/04	4:1	METRIC	THIRD ANGLE PROJECTION
	DRAFT WHERE APPLICABLE MUST REMAIN WITHIN DIMENSIONS	MATERIAL NO. 43760-0001 SIZE D THIS DRAWING CONTAINS INFORMATION THAT IS PROPRIETARY TO MOLEX INCORPORATED AND SHOULD NOT BE USED WITHOUT WRITTEN PERMISSION	TITLE: PANEL-MOUNT RECEPTACLE 36-CIRCUIT BLIND MATE MINI-FIT SERIES MOLEX INCORPORATED DOCUMENT NO. SD-43760-001			SHEET NO. 2 OF 2