

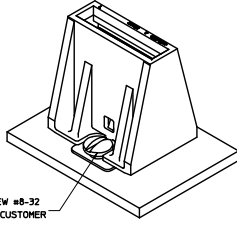
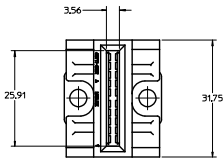
## **Excellent Integrated System Limited**

Stocking Distributor

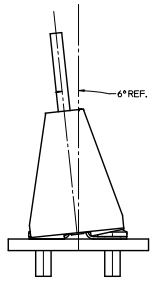
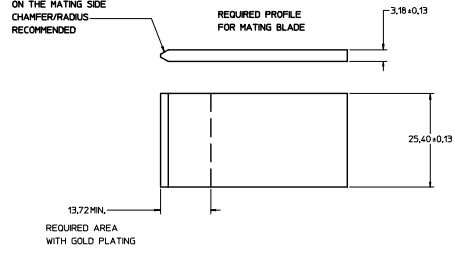
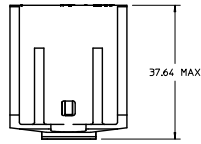
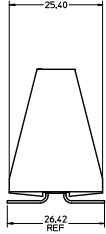
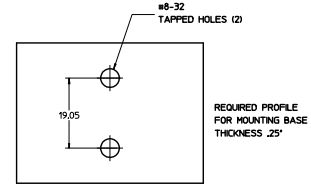
Click to view price, real time Inventory, Delivery & Lifecycle Information:

[Molex Connector Corporation](#)  
[0457111000](#)

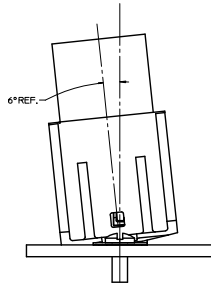
For any questions, you can email us directly:  
[sales@integrated-circuit.com](mailto:sales@integrated-circuit.com)



MACHINE SCREW #8-32  
SUPPLIED BY CUSTOMER  
(2 REQUIRED)



CONNECTOR IS ALLOWED  
TO "LEAN" 6° IN EITHER DIRECTION  
(AS SHOWN)



**NOTE:**

- MATERIALS:**  
TERMINALS: HIGH CONDUCTIVITY COPPER ALLOY  
PLATING: GOLD PLATED IN CONTACT AREA  
HOUSING: RoHS COMPLIANT 94V-0 THERMOPLASTIC
- MEETS MOLEX PRODUCT SPEC. PS-45711-001.
- PACKAGED PER MOLEX PACKAGING SPEC. PK-45711-000.

<b>MOD DIMENSIONS</b> EC MOL APP/204-3732 DRAWN BY SZCZOR 20/10/11 CHECKED APPROPRIATE 20/10/11 DESIGNED BY	<b>QUALITY SYMBOLS</b> ∇=0 ∇=0		<b>GENERAL TOLERANCES (UNLESS SPECIFIED)</b> mm INCH 4 PLACES ± --- ± --- 3 PLACES ± --- ± --- 2 PLACES ± 0.25 ± --- 1 PLACE ± 0.25 ± --- ANGULAR ± 1 °		<b>DIMENSION STYLE</b> MM ONLY		SCALE 2:1	DESIGN UNITS METRIC	THIRD ANGLE PROJECTION
	DRAWN BY DATE SBB 11/19/04		CHECKED BY DATE B KOSTIC 03/17/06		DRAWN BY DATE SBB 11/19/04		CHECKED BY DATE B KOSTIC 03/17/06		TITLE BUS BAR CONN ASSY VERTICAL MOUNT
	MATERIAL NO. 45711-1000		APPROVED BY DATE		MOLEX MOLEX INCORPORATED		DOCUMENT NO. SD-45711-100		SHEET NO. 1 OF 1
	DRAFT WHERE APPLICABLE MUST REMAIN WITHIN DIMENSIONS SIZE D THIS DRAWING CONTAINS INFORMATION THAT IS PROPRIETARY TO MOLEX INCORPORATED AND SHOULD NOT BE USED WITHOUT WRITTEN PERMISSION								