

Excellent Integrated System Limited

Stocking Distributor

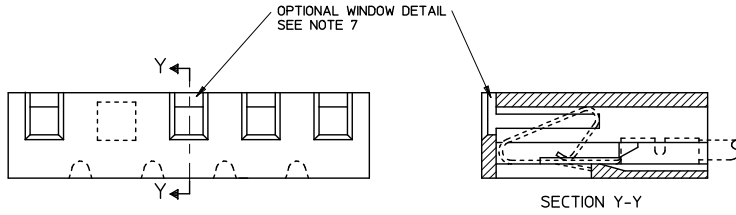
Click to view price, real time Inventory, Delivery & Lifecycle Information:

[Molex Connector Corporation](#)

[0010011074](#)

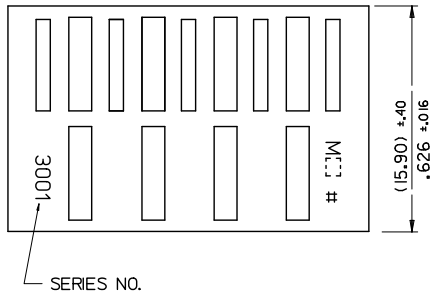
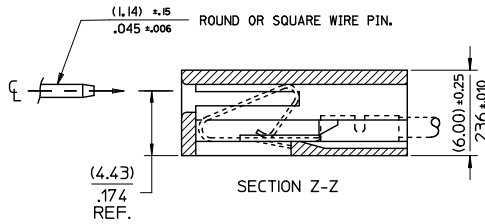
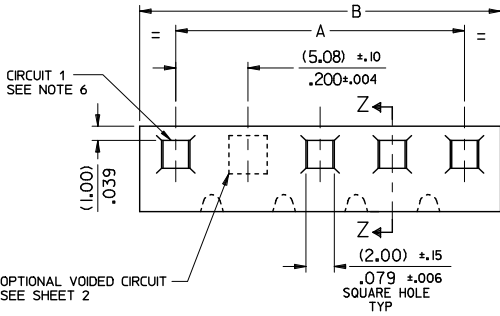
For any questions, you can email us directly:

sales@integrated-circuit.com



NOTES:

1. MATERIAL: NYLON, UL94V-2, COLOR: NATURAL
2. FINISH: N/A
3. PRODUCT SPECIFICATION: PS-99020-0087
4. THIS HOUSING USES KK TERMINAL SERIES 2478, 2578, AND 2878.
5. THIS PART CONFORMS TO CLASS B REQUIREMENTS OF COSMETIC SPECIFICATION PS-45499-002.
6. CIRCUIT 1 USED TO DEFINE VOID LOCATION.
7. WINDOW GEOMETRY IS DEPENDENT ON MOLD. PARTS MAY HAVE EITHER GEOMETRY.



PART No.	ENG. No.	A		B		A		B	
		ENGLISH		METRIC		ENGLISH		METRIC	
10-01-1124	E-3001-12	2,200 ± .010	2,400 ± .010	55.88 ± .25	60.96 ± .25				
1114	-11	2,000 ± .008	2,200 ± .008	50.80 ± .20	55.88 ± .20				
1104	-10	1,800 ± .008	2,000 ± .008	45.72 ± .20	50.80 ± .20				
1094	-9	1,600 ± .008	1,800 ± .008	40.64 ± .20	45.72 ± .20				
1084	-8	1,400 ± .008	1,600 ± .008	35.56 ± .20	40.64 ± .20				
1074	-7	1,200 ± .008	1,400 ± .008	30.48 ± .20	35.56 ± .20				
1064	-6	1,000 ± .004	1,200 ± .004	25.40 ± .10	30.48 ± .10				
1054	-5	.800 ± .004	1,000 ± .004	20.32 ± .10	25.40 ± .10				
1044	-4	.600 ± .004	.800 ± .004	15.24 ± .10	20.32 ± .10				
1034	-3	.400 ± .004	.600 ± .004	10.16 ± .10	15.24 ± .10				
10-01-1024	E-3001-2	.200 ± .004	.400 ± .004	5.08 ± .10	10.16 ± .10				

REMOVE 114 DIM. EC. NO: UCP2015-4130 DRAWN/KUPPER 2015/04/07 CHKD:JBELL 2015/04/08 APPR:FSMITH 2015/04/09 R2	DESCRIPTION √=0 √=0 √=0	QUALITY SYMBOLS		GENERAL TOLERANCES (UNLESS SPECIFIED)		DIMENSION STYLE MM/IN		SCALE 1:1	DESIGN UNITS METRIC	THIRD ANGLE PROJECTION
		4 PLACES ± --- ± --- 3 PLACES ± --- ± .010 2 PLACES ± 0.25 ± .014 1 PLACE ± 0.35 ± --- 0 PLACE ± ±	mm INCH ± --- ± --- ± .25 ± .014 ± 0.35 ± --- ± ±	DRAWN BY P. MOORE	DATE 1998/09/15	TITLE KK (5.08)/200 CRIMP TERMINAL HOUSING				
		ANGULAR ± 1/2°		CHECKED BY MGOONEY	DATE 1999/03/12	MATERIAL NO. SEE CHART			DOCUMENT NO. SDE-3001-N-*	SHEET NO. 1 OF 1
		DRAFT WHERE APPLICABLE MUST REMAIN WITHIN DIMENSIONS		APPROVED BY FSMITH			THIS DRAWING CONTAINS INFORMATION THAT IS PROPRIETARY TO MOLEX INCORPORATED AND SHOULD NOT BE USED WITHOUT WRITTEN PERMISSION			