

Excellent Integrated System Limited

Stocking Distributor

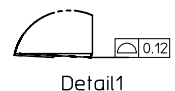
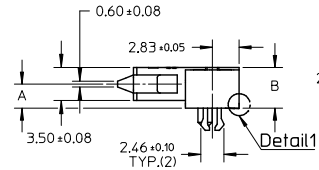
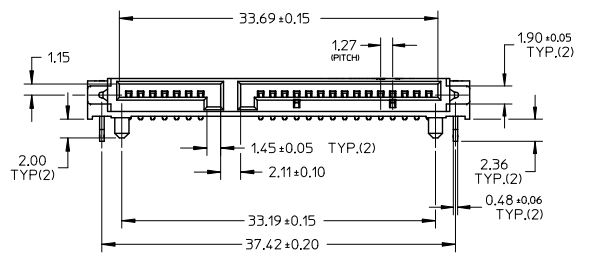
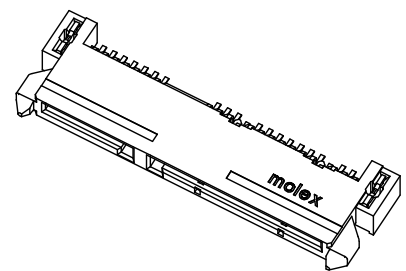
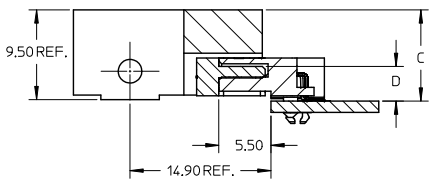
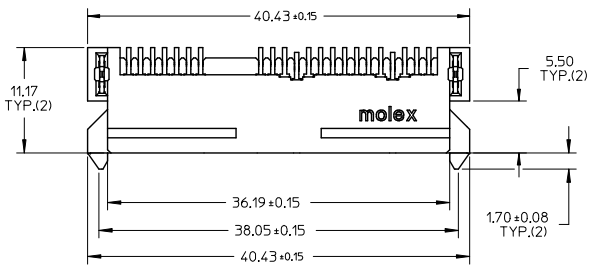
Click to view price, real time Inventory, Delivery & Lifecycle Information:

[Molex Connector Corporation](#)
[0470184001](#)

For any questions, you can email us directly:

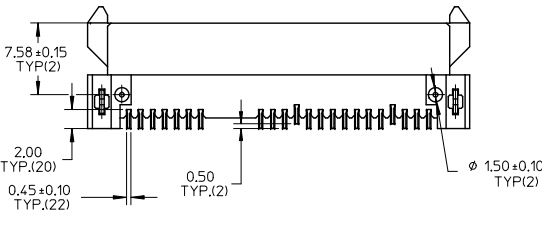
sales@integrated-circuit.com

10 9 8 7 6 5 4 3 2 1



NOTES:

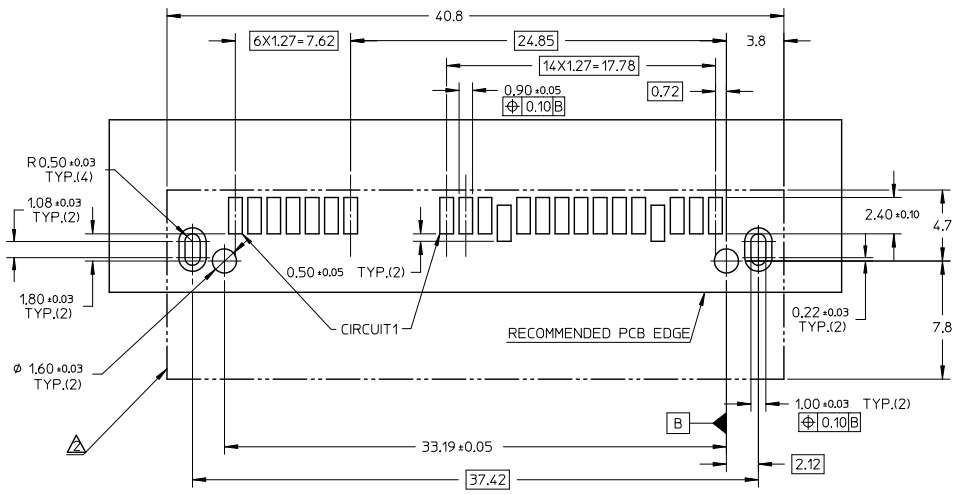
- 1.MATERIAL:
HOUSING: LCP, GLASS FILLED, UL94V-0. COLOR: BLACK;
FORKLOCK: COPPER ALLOY;
TERMINALS: COPPER ALLOY.
- 2.TERMINAL PLATING:
CONTACT AREA:
(a) GOLD FLASH(0.025 MICRONS MINIMUM);
(b) GOLD, THICKNESS=0.76 MICRONS MINIMUM;
(c) GOLD, THICKNESS=0.38 MICRONS MINIMUM;
SOLDER AREA: TIN, THICKNESS=2.00 MICRONS MINIMUM;
UNDER PLATE: NICKEL, THICKNESS=1.27 MICRONS MINIMUM.
- 3.FORLOCK PLATING:
SOLDER AREA: TIN, THICKNESS=2.00 MICRONS MINIMUM;
UNDER PLATING: NICKEL, THICKNESS=1.27 MICRONS MINIMUM.
- 4.PRODUCT SPECIFICATION: PS-67492-001.
- 5.PACKAGING METHOD: 47018-400*, TAPE REEL, DETAIL REFER TO PK-47018-003,
47018-210*, TAPE REEL, DETAIL REFER TO PK-47018-001,
OTHERS, TRAY, DETAIL REFER TO PK-67492-001.
- 6.MATING PARTS: 87703/87672.
- 7.PRODUCT COMPLIANT TO RoSH DIRECTIVE 2002/95/EC AND 2000/53/EC.



REVISED EC. NO: SH2016-0027 DRAWN: GLLI CHKD: APPR: ATIN REV	DESCRIPTION 2015/12/08 2016/01/18	QUALITY SYMBOLS	GENERAL TOLERANCES (UNLESS SPECIFIED)	DIMENSION STYLE	SCALE	DESIGN UNITS	THIRD ANGLE PROJECTION															
		$\nabla=0$ $\nabla=0$ $\nabla=0$	<table border="1"> <thead> <tr> <th></th> <th>mm</th> <th>INCH</th> </tr> </thead> <tbody> <tr> <td>4 PLACES</td> <td>± ---</td> <td>± ---</td> </tr> <tr> <td>3 PLACES</td> <td>± ---</td> <td>± ---</td> </tr> <tr> <td>2 PLACES</td> <td>± 0.25</td> <td>± ---</td> </tr> <tr> <td>1 PLACE</td> <td>± 0.25</td> <td>± ---</td> </tr> <tr> <td colspan="3">ANGULAR ± 3°</td> </tr> </tbody> </table>		mm	INCH		4 PLACES	± ---	± ---	3 PLACES	± ---	± ---	2 PLACES	± 0.25	± ---	1 PLACE	± 0.25	± ---	ANGULAR ± 3°		
	mm	INCH																				
4 PLACES	± ---	± ---																				
3 PLACES	± ---	± ---																				
2 PLACES	± 0.25	± ---																				
1 PLACE	± 0.25	± ---																				
ANGULAR ± 3°																						
		DRAFT WHERE APPLICABLE MUST REMAIN WITHIN DIMENSIONS		DRAWN BY: GLLI CHECKED BY: APPROVED BY: XJSONG DATE: 2011/12/12 MATERIAL NO.: SEE SHEET 2 SIZE: A3	DATE: 2011/12/12 TITLE: SERIAL ATA DOCKING CONNECTOR TOP MOUNT TYPE MOLEX INCORPORATED DOCUMENT NO.: SD-47018-001 SHEET NO.: 1 OF 2																	

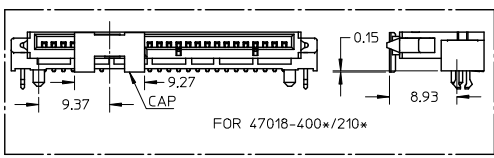
9 8 7 6 5 4 3 2 1

10 9 8 7 6 5 4 3 2 1



NOTES:
1. RECOMMENDED P.C.B THICKNESS: 1.60+/-0.05.
△ CONNECTOR PROFILE, ALL THE TRACE SHOULD BE AVOIDED THIS AREA.

RECOMMENDED P.C.B LAYOUT (COMPONENT SIDE)



FOR 47018-400*/210*

PRODUCT	CONTACT PLATING SPEC	DIM'A	DIM'B	DIM'C	DIM'D	PACKAGE	REMARK
47018-2100	NOTES 2 (A) OF SHEET 1					TAPE REEL	PURE TIN (LIGHT TIN)
47018-2101	NOTES 2 (B) OF SHEET 1	2.55	4.30	9.65	3.65	TAPE REEL	PURE TIN (LIGHT TIN) WITH CAP
47018-2102	NOTES 2 (C) OF SHEET 1					TAPE REEL	PURE TIN (LIGHT TIN) WITH CAP
47018-4000	NOTES 2 (A) OF SHEET 1					TAPE REEL	PURE TIN (LIGHT TIN)
47018-4001	NOTES 2 (B) OF SHEET 1	3.40	5.15	10.50	4.50	TAPE REEL	PURE TIN (LIGHT TIN) WITH CAP
47018-4002	NOTES 2 (C) OF SHEET 1					TAPE REEL	PURE TIN (LIGHT TIN) WITH CAP
47018-2010	NOTES 2 (A) OF SHEET 1					TRAY	PURE TIN (MATTE TIN)
47018-2011	NOTES 2 (B) OF SHEET 1	2.55	4.30	9.65	3.65	TRAY	PURE TIN (MATTE TIN)
47018-2012	NOTES 2 (C) OF SHEET 1					TRAY	PURE TIN (MATTE TIN)
47018-2000	NOTES 2 (A) OF SHEET 1					TRAY	PURE TIN (MATTE TIN)
47018-2001	NOTES 2 (B) OF SHEET 1	2.55	4.30	9.65	3.65	TRAY	PURE TIN (MATTE TIN)
47018-2002	NOTES 2 (C) OF SHEET 1					TRAY	PURE TIN (MATTE TIN)

REVISED EC NO: SH2016-0027 DRAWING: GLL1 CHKD: APPR: ATIN 2015/12/08 2016/01/18	QUALITY SYMBOLS	GENERAL TOLERANCES (UNLESS SPECIFIED)	DIMENSION STYLE	SCALE	DESIGN UNITS	THIRD ANGLE PROJECTION
	∇=0 ∇=0 ∇=0	mm INCH 4 PLACES ± --- ± --- 3 PLACES ± --- ± --- 2 PLACES ± 0.25 ± --- 1 PLACE ± 0.25 ± --- ANGULAR ± 3°	MM ONLY	1:1	METRIC	SERIAL ATA DOCKING CONNECTOR TOP MOUNT TYPE MOLEX INCORPORATED
	DRAFT WHERE APPLICABLE MUST REMAIN WITHIN DIMENSIONS	DRAWN BY: GLL1 DATE: 2011/12/12 CHECKED BY: DATE: APPROVED BY: XJSONG DATE: 2011/12/12	MATERIAL NO. SEE TABLE SIZE: A3	DOCUMENT NO. SD-47018-001	SHEET NO. 2 OF 2	
	THIS DRAWING CONTAINS INFORMATION THAT IS PROPRIETARY TO MOLEX INCORPORATED AND SHOULD NOT BE USED WITHOUT WRITTEN PERMISSION					

9 8 7 6 5 4 3 2 1