

Excellent Integrated System Limited

Stocking Distributor

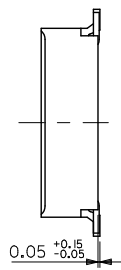
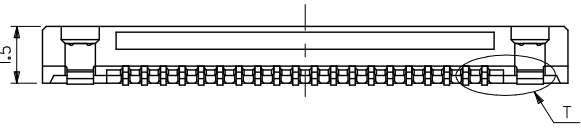
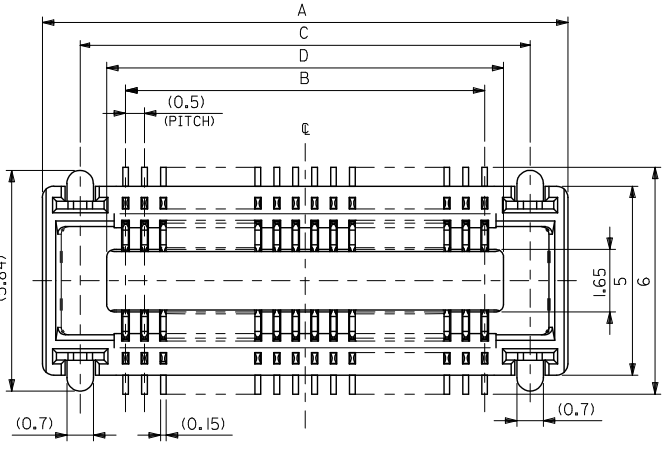
Click to view price, real time Inventory, Delivery & Lifecycle Information:

[Molex Connector Corporation](#)
[0543630778](#)

For any questions, you can email us directly:

sales@integrated-circuit.com

10 9 8 7 6 5 4 3 2 1



注記
NOTES:

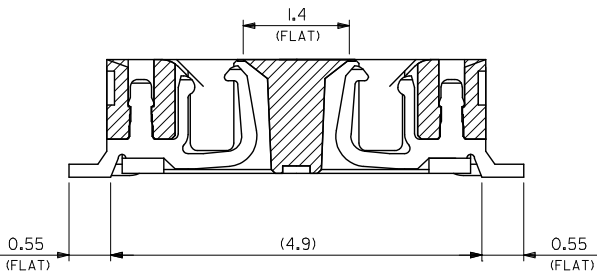
1. 材質
MATERIAL
ハウジング: LCP (液晶ポリマー)、ガラス充填、黒色、UL 94V-0
HOUSING: LCP (LIQUID CRYSTAL POLYMER), GLASS FILLED, BLACK, UL 94V-0
ターミナル: 銅合金 (t=0.15)
TERMINAL: COPPER ALLOY (t=0.15)
ネイル: 銅合金 (t=0.2)
NAIL: COPPER ALLOY (t=0.2)
2. メッキ仕様
PLATING
ターミナル
TERMINAL
接点部: 金メッキ 0.25マイクロメートル以上
CONTACT AREA: GOLD 0.25 MICROMETER MINIMUM
半田付け部: 金メッキ 0.4マイクロメートル以下
SOLDER TAIL AREA: GOLD 0.4 MICROMETER MAXIMUM
下地メッキ: ニッケルメッキ 1.5マイクロメートル以上
UNDER PLATING: NICKEL 1.5 MICROMETER MINIMUM
ネイル
NAIL
ニッケルメッキ 3.0マイクロメートル以上
Ni 3.0 MICROMETER MINIMUM
下地メッキ: ニッケルメッキ 1.0マイクロメートル以上
UNDER PLATING: Ni 1.0 MICROMETER MINIMUM
3. テール平坦度は、0.08ミリメートル以下。テールとネイルを併せた平坦度は、0.1ミリメートル以下。
TAIL COPLANARITY TO BE 0.08 MAXIMUM. TAILS AND NAILS FLATNESS IS 0.1 MILLIMETER MAXIMUM.
4. 嵌合相手: 55299-**** (H=3mm)
MATED CONN.: 55299-**** (H=3mm)
55201-****, 55650-**** (H=2mm)
5. この製品は54363-**01, (インボス梱包品 54363-**08) の姉妹品です。
THIS PRODUCT IS 'LEAD FREE' OF 54363-**01, (EMBOSSED TAPE PKG 54363-**08)

| | | | | | | | |
|------|------|------|------|------------------------------------|----------------------|----------------|-------------------|
| 40.5 | 41.9 | 39.5 | 43.9 | 54363-I678 | 54363-I671 | 160 | — |
| 35.5 | 36.9 | 34.5 | 38.9 | 54363-I478 | 54363-I471 | 140 | ○ |
| 30.5 | 31.9 | 29.5 | 33.9 | 54363-I278 | 54363-I271 | 120 | ○ |
| 28 | 29.4 | 27 | 31.4 | 54363-I178 | 54363-I171 | 110 | ○ |
| 25.5 | 26.9 | 24.5 | 28.9 | 54363-I078 | 54363-I071 | 100 | ○ |
| 23 | 24.4 | 22 | 26.4 | 54363-O978 | 54363-O971 | 90 | — |
| 20.5 | 21.9 | 19.5 | 23.9 | 54363-O878 | 54363-O871 | 80 | ○ |
| 18 | 19.4 | 17 | 21.4 | 54363-O778 | 54363-O771 | 70 | ○ |
| 15.5 | 16.9 | 14.5 | 18.9 | 54363-O678 | 54363-O671 | 60 | ○ |
| 13 | 14.4 | 12 | 16.4 | 54363-O578 | 54363-O571 | 50 | ○ |
| 10.5 | 11.9 | 9.5 | 13.9 | 54363-O478 | 54363-O471 | 40 | ○ |
| 8 | 9.4 | 7 | 11.4 | 54363-O378 | 54363-O371 | 30 | ○ |
| 5.5 | 6.9 | 4.5 | 8.9 | 54363-O278 | 54363-O271 | 20 | ○ |
| D | C | B | A | インボス梱包品 EMBOSSED TAPE PACKAGING | 製品番号 MATERIAL NO. | 極数 CIRCUITS | 量産対応 AVAILABLE |

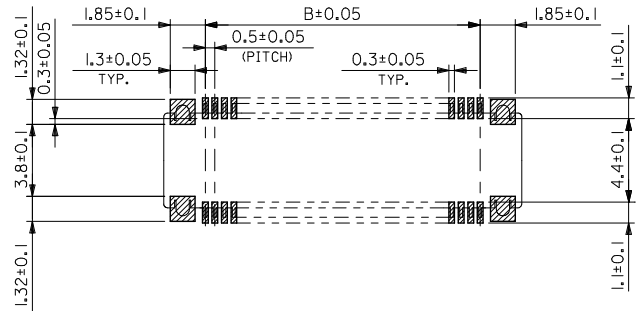
| | | | | | | | |
|---------------------------------------------------------------------------------------------------------------------|---------------------------------------|------------------------------------------------------|-------------------|-----------------------------------------------------------------------------------------------------------------------------------------------|---------------------------------------------------------------------------|--------------|------------------------|
| REVISED EC NO: J2016-0601 DRAWN: FURUKAWA 2015/12/08 CHKD: TASKAWA 2015/12/08 APPR: MORIKAWA 2015/12/16 | GENERAL TOLERANCES (UNLESS SPECIFIED) | | DIMENSION STYLE | | SCALE | DESIGN UNITS | THIRD ANGLE PROJECTION |
| | 0.25 UNDER UNDER ±0.03 | | MM ONLY | | 10:1 | METRIC | |
| | 0.25 OVER 0.5 UNDER ±0.05 | | DRAWN BY DATE | | TITLE | | |
| | 0.5 OVER 1.0 UNDER ±0.1 | | A. IDA 2004/01/06 | | 0.5 PITCH B/B CONN. REC. HOUSING ASSY (H=2.3) WITH NAIL -LEAD FREE- | | |
| 1.0 OVER 10 UNDER ±0.2 | | CHECKED BY DATE | | APPROVED BY DATE | | molex | |
| 10 OVER 30 UNDER ±0.25 | | APPROVED BY DATE | | MATERIAL NO. | | DOCUMENT NO. | SHEET NO. |
| 30 OVER ±0.3 | | DRAFT WHERE APPLICABLE MUST REMAIN WITHIN DIMENSIONS | | SEE CHART | | SD-54363-038 | 1 OF 2 |
| ANGULAR ±3 ° | | SIZE A3 | | THIS DRAWING CONTAINS INFORMATION THAT IS PROPRIETARY TO MOLEX ELECTRONIC TECHNOLOGIES, LLC AND SHOULD NOT BE USED WITHOUT WRITTEN PERMISSION | | | |

9 8 7 6 5 4 3 2 1

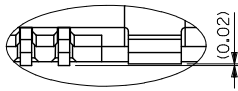
10 9 8 7 6 5 4 3 2 1



製品断面図 (半田付け部、吸着面寸法)
DETAIL FOR SOLDERING AND VACUUM AREA



推奨基板寸法
RECOMMENDED PCB PATTERN LAYOUT
(SCALE:5-1)

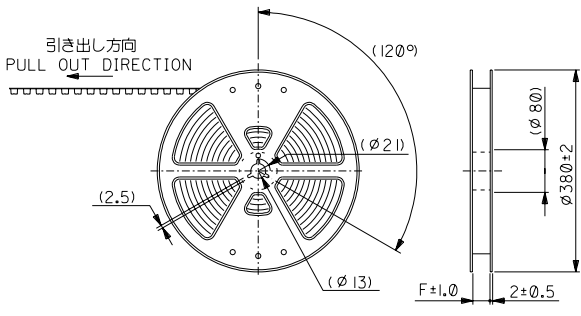


ピン詳細
DETAIL T

| | | | | | | | |
|-------------------------------------------------------------------------------------------------------------------------|---------------------------------------|-----------|-----------------|-----------------------------------------------------------------------------------------------------------------------------------------------|--------------|---------------------------------------------------------------------|------------------------|
| REVISED EC NO: J2016-0601 DRWN: FURUKAWA 2015/12/08 CHKD: TASHIKAWA 2015/12/08 APPR: KIMORI KAWA 2015/12/16 | GENERAL TOLERANCES (UNLESS SPECIFIED) | | DIMENSION STYLE | | SCALE | DESIGN UNITS | THIRD ANGLE PROJECTION |
| | (UNLESS SPECIFIED) | | MM ONLY | | 20:1 | METRIC | |
| | 0.25 UNDER | UNDER | ±0.03 | DRAWN BY | DATE | TITLE | |
| | 0.25 OVER | 0.5 UNDER | ±0.05 | A. IDA | 2004/01/06 | 0.5 PITCH B/B CONN. REC. HOUSING ASSY (H=2.3) WITH NAIL -LEAD FREE- | |
| | 0.5 OVER | 1.0 UNDER | ±0.1 | CHECKED BY | DATE | molex | |
| 1.0 OVER | 10 UNDER | ±0.2 | H. TAKASE | 2004/01/06 | DOCUMENT NO. | | |
| 10 OVER | 30 UNDER | ±0.25 | APPROVED BY | DATE | SD-54363-038 | | |
| 30 OVER | | ±0.3 | MATERIAL NO. | | SHEET NO. | | |
| ANGULAR | ±3 ° | | SEE CHART | | 2 OF 2 | | |
| DRAFT WHERE APPLICABLE MUST REMAIN WITHIN DIMENSIONS | | | SIZE | THIS DRAWING CONTAINS INFORMATION THAT IS PROPRIETARY TO MOLEX ELECTRONIC TECHNOLOGIES, LLC AND SHOULD NOT BE USED WITHOUT WRITTEN PERMISSION | | | |

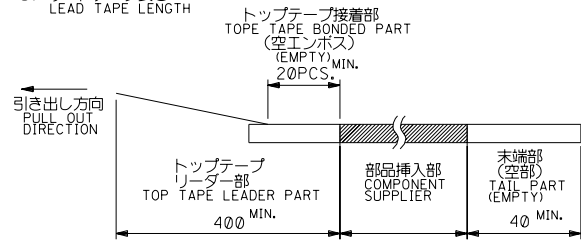
9 8 7 6 5 4 3 2 1

DWG. NO. SD-54363-039



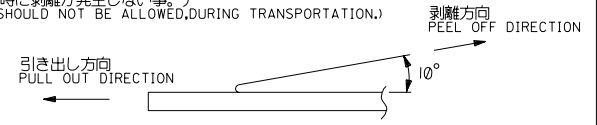
注) NOTES

1. 製品番号54363-**-71 詳細寸法については、製品単体図面を参照下さい。
IN THE PACKAGE PART NUMBER: 54363-**-71 DETAILED DIMENSIONS, SEE SALES DRAWING FOR CONNECTOR.
2. 梱包数量: 2500個/リール
NUMBER OF CONNECTORS: 2500 PCS/REEL.
3. リードテープ長さ
LEAD TAPE LENGTH



4. トップテープの剥離強度: (剥離方向は下図参照)
PEELING OFF FORCE OF TOP TAPE (PELLING DIRECTION AS SHOWN IN FOLLOWING FIGURE.)
0.1~1.3N (10~130gf)

尚、本規格値は、出荷時に適用。
THIS REQUIREMENT SHOULD BE APPLIED AT SHIPMENT.
(但し、輸送時に剥離が発生しない事。)
(PEEL OFF SHOULD NOT BE ALLOWED, DURING TRANSPORTATION.)



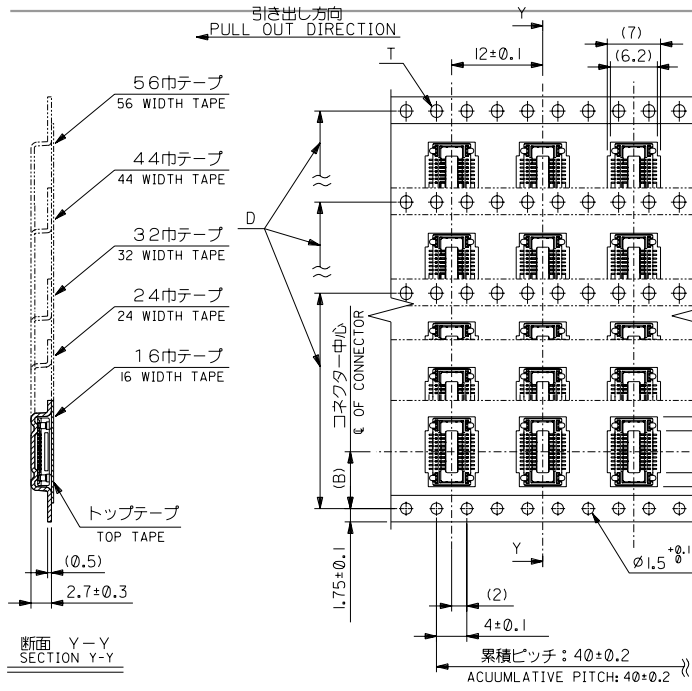
5. 材料
MATERIAL
キャリアテープ: ポリプロピレン (PP)
CARRIER TAPE: POLYPROPYLENE (PP)
トップテープ: PET, PE, PEF
TOP TAPE: PET, PE, PEF
リール: ポリスチレン
REEL: POLYSTYRENE
6. この製品は54363-**-01, (エンボス梱包品 54363-**-08) の鉛フリー品です。
THIS PRODUCT IS 'LEAD FREE' OF 54363-**-01, (EMBOSSED TAPE PKG 54363-**-08)

DO NOT SCALE DRAWING

| | | | | | | | | | | | | | | | | | | | | | | | | | | | | | | | | | | | | | | | | | |
|-----------------------------------|--|-----------------------------------|--|-----------------------------------|--|---------------------------------------------------------------------------------------------------|--|----------------------------------------------------------------------------------------------------|--|-------------------------------------|--|---------------------------------------------------|--|---------------|--|-------------------------|--|---------------------------|--|--------------------------------------|--|------------------------------------------|--|---------------------------------|--|----------------------------------|--|---------------------------|--|-----------------------------|--|---------------------|--|--------------------------------------------------------|--|--------------------|--|--------------------------------------------------------------------------------------------------------------------------------|--|-----------|--|
| EC NO. DRAWN: CHK: APPR: | | EC NO. DRAWN: CHK: APPR: | | EC NO. DRAWN: CHK: APPR: | | REVISED ECNNO.: J2004-2225 DRAWN: A.IDA '04/02/02 CHK: H.TAKASE APPR: MITAZAWA/YO.ITO | | RELEASED ECNNO.: J2004-1740 DRAWN: A.IDA '04/01/06 CHK: H.TAKASE APPR: MIYAZAWA/YO.ITO | | MATERIAL 材料 注記参照 SEE NOTES | | GENERAL TOLERANCES: (UNLESS SPECIFIED) 一般公差 | | SCALE NONE | | DESIGN UNITS mm INCH | | THIRD ANGLE PROJECTION | | DIMENSIONS: mm INCH mm ONLY | | SHT REV | | | | | | | | | | | | | | | | | | | |
| EC NO. DRAWN: CHK: APPR: | | EC NO. DRAWN: CHK: APPR: | | EC NO. DRAWN: CHK: APPR: | | A | | 0 | | FINISH 仕上げ 注記参照 SEE NOTES | | 10 UNDER 未満 | | 10 OVER 以上 | | 30 UNDER 未満 | | 30 OVER 以上 | | DRAWN BY & DATE A. Iida '04/01/06 | | CHECKED BY & DATE S. Takase '04/01/06 | | APPROVED BY & DATE '04/01/06 | | CAD FILENAME SD-54363-039.S01 | | MATERIAL NO. SEE CHART | | DRAWING NO. SD-54363-039 | | SHEET NO. 1 OF 2 | | TITLE: 54363-**-71 TAPING PACKAGE -LEAD FREE- | | MOLEX INCORPORATED | | THIS DRAWING CONTAINS INFORMATION THAT IS PROPRIETARY TO MOLEX INCORPORATED AND SHOULD NOT BE USED WITHOUT WRITTEN PERMISSION. | | SIZE B | |
| 8 | | 7 | | 6 | | 5 | | 4 | | 3 | | 2 | | 1 | | EN-02J(097) MXJ-54 | | | | | | | | | | | | | | | | | | | | | | | | | |

543630778-01

DWG. NO. SD-54363-039



| | | | | | | | |
|------|--------|------|------|-------|------------|-----|---|
| 57.5 | 56±0.3 | 52.4 | 44.2 | 40.55 | 54363-1678 | 160 | — |
| | | | 39.2 | 35.55 | 54363-1478 | 140 | ○ |
| | | | 34.2 | 30.55 | 54363-1278 | 120 | ○ |
| | | | 31.7 | 28.05 | 54363-1178 | 110 | ○ |
| 45.5 | 44±0.3 | 40.4 | 29.2 | 25.55 | 54363-1078 | 100 | ○ |
| | | | 26.7 | 23.05 | 54363-0978 | 90 | — |
| | | | 24.2 | 20.55 | 54363-0878 | 80 | ○ |
| 33.5 | 32±0.3 | 28.4 | 21.7 | 18.05 | 54363-0778 | 70 | ○ |
| | | | 19.2 | 15.55 | 54363-0678 | 60 | ○ |
| | | | 16.7 | 13.05 | 54363-0578 | 50 | ○ |
| 25.5 | 24±0.3 | — | 14.2 | 10.55 | 54363-0478 | 40 | ○ |
| | | | 11.7 | 8.05 | 54363-0378 | 30 | ○ |
| 17.5 | 16±0.3 | — | 9.2 | 5.55 | 54363-0278 | 20 | ○ |

| | | | | | |
|-------------------------------------|-------------------------------------|-------------------------------------|-------------------------------------|---------------------------------------------------------|-------------------------------|
| EC NO. DRAWN: CHK'G: APPR: | EC NO. DRAWN: CHK'G: APPR: | EC NO. DRAWN: CHK'G: APPR: | EC NO. DRAWN: CHK'G: APPR: | SEE SHEET 1 OF 2 ECNNO. DRAWN: CHK'G: APPR: | DESCRIPTION MATERIAL 材料 |
| | | | | 0 | FINISH 仕上げ |
| | | | | | WIRE RANGE 適用電線範囲 |
| | | | | | INS. RANGE 被覆外径 |

| | | | | | |
|--------------------------------------------------------------------------------------------------------------------------------|---------------|----------------------------------------------------|-------------------------------------|-------------------------------------------------------------------------------------------------------|-----------------------|
| GENERAL TOLERANCES: (UNLESS SPECIFIED) 一般公差 | SCALE NONE | DESIGN UNITS mm INCH | THIRD ANGLE PROJECTION | DIMENSIONS: mm INCH mm INCH mm ONLY | SHT REV |
| 10 UNDER 未満 | +0.2 | DRAWN BY & DATE A. Iida 04/01/06 | <input checked="" type="checkbox"/> | <input type="checkbox"/> mm <input type="checkbox"/> INCH <input checked="" type="checkbox"/> mm ONLY | REVISE ON CAD ONLY |
| 10 OVER 以上 | +0.25 | CHECKED BY & DATE S. Takase 04/01/06 | <input type="checkbox"/> | | |
| 30 OVER 以上 | +0.3 | APPROVED BY & DATE S. Takase / S. Iida 04/01/06 | <input type="checkbox"/> | | |
| ANGLE 角度 | ±3° | CAD FILENAME SD-54363-039.S02 | <input type="checkbox"/> | | |
| THIS DRAWING CONTAINS INFORMATION THAT IS PROPRIETARY TO MOLEX INCORPORATED AND SHOULD NOT BE USED WITHOUT WRITTEN PERMISSION. | | | SIZE B | | |

製品番号 MATERIAL NO. 54363-***71
極数 CIRCUITS 160
量産対応 AVAILABLE

TITILE: 54363-***71 TAPING PACKAGE -LEAD FREE-

MOLEX MOLEX INCORPORATED

MATERIAL NO. SEE CHART DRAWING NO. SD-54363-039 SHEET NO. 2

EN-02J(097) MXJ-54

A 54363039S02