

Excellent Integrated System Limited

Stocking Distributor

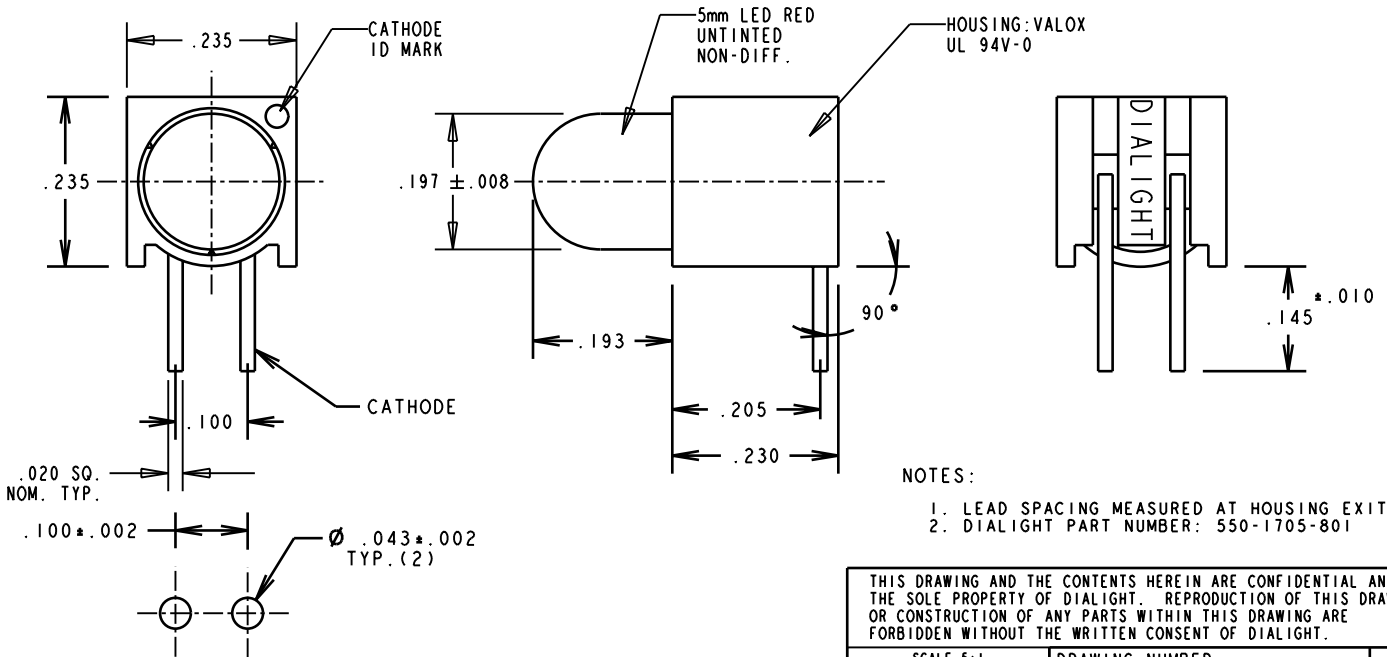
Click to view price, real time Inventory, Delivery & Lifecycle Information:

[Dialight](#)
[5501705801F](#)

For any questions, you can email us directly:
sales@integrated-circuit.com

OPERATING CHARACTERISTICS AT 25 °C	
LED COLOR	RED UNTINTED NON-DIFFUSED
LUMINOUS INTENSITY	1400 MIN. (mcd) @ 20 mA
PEAK WAVE LENGTH	635 nm
VIEWING ANGLE (2 Θ 1/2)	15°
FORWARD VOLTAGE	2.4(V) MAX. @ 20 mA
REVERSE BREAKDOWN VOLTAGE	5(V) MIN. @ 100μA

REV.	ECN NO.	REVISIONS	DRN.	CKD.	APP.	DATE
A	—	NEW RELEASE	DC		N.O.	5-28-98
B	—	REPLACED HOUSING; .193 WAS .183; ADDED NOTE 2.	TC			



NOTES:

1. LEAD SPACING MEASURED AT HOUSING EXIT.
2. DIALIGHT PART NUMBER: 550-1705-801

THIS DRAWING AND THE CONTENTS HEREIN ARE CONFIDENTIAL AND THE SOLE PROPERTY OF DIALIGHT. REPRODUCTION OF THIS DRAWING OR CONSTRUCTION OF ANY PARTS WITHIN THIS DRAWING ARE FORBIDDEN WITHOUT THE WRITTEN CONSENT OF DIALIGHT.

SCALE 5:1	DRAWING NUMBER	REV
ALL DIM'S IN: INCHES	C-16386	B
TOLERANCES: UNLESS OTHERWISE SPECIFIED	TITLE 5mm LED CBI SQ. BACK HOUSING	
FRACTIONS: ±1/64	MATERIAL	
DECIMALS (.XX): ±.020	Dialight	
DECIMALS (.XXX): ±.015	1913 ATLANTIC AVE. MANASQUAN, N.J. 08736	
ANGLES: ±3°	FSCM 83330	
FINISH:	SHEET OF	FAMILY TABLE:

RECOMMENDED P.C. BOARD HOLE PATTERN

ABSOLUTE MAXIMUM RATINGS @ 25 °C	
FORWARD CURRENT	50 mA
PEAK PULSED FORWARD CURRENT	70 mA
SOLDERING TEMPERATURE (.063" FROM BODY)	260 °C FOR 5 SEC
OPERATING TEMPERATURE	-40 TO +100 °C
STORAGE TEMPERATURE	-40 TO +120 °C