

Excellent Integrated System Limited

Stocking Distributor

Click to view price, real time Inventory, Delivery & Lifecycle Information:

[Dialight](#)
[5510004834F](#)

For any questions, you can email us directly:

sales@integrated-circuit.com

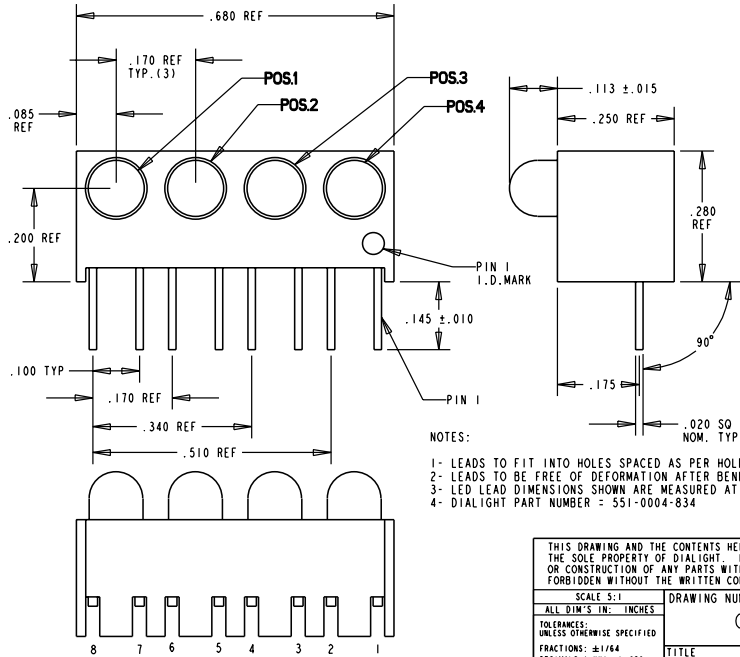
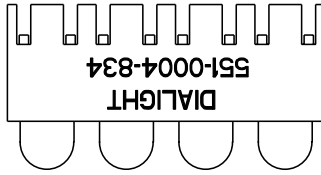
REV.	ECN NO.	REVISIONS	DRN.	CKD.	APP.	DATE
A		NEW RELEASE	ADM			

POS. 1	POS. 2	POS. 3	POS. 4
GREEN	GREEN	GREEN	RED

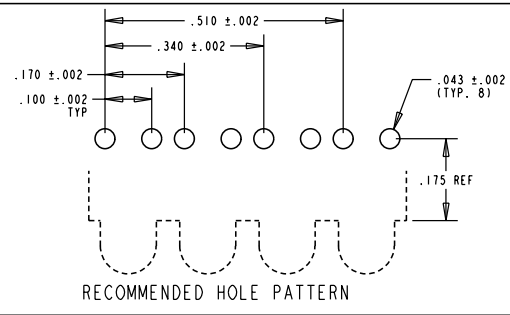
OPERATING CHARACTERISTICS AT 25°C AMBIENT

CHARACTERISTICS		MIN	TYP	MAX	UNITS	TEST CONDITIONS
LUMINOUS INTENSITY	GREEN	5.6	16.0		mcd	I _r = 10 mA
	RED	3.6	10.0			
FORWARD VOLTAGE	GREEN		2.1	3.0	V	I _r = 10 mA
	RED		2.0	3.0		
REVERSE CURRENT	GREEN			10	μA	V _r = 3 V
	RED					
PEAK WAVELENGTH	GREEN		563		nm	
	RED		650			
VIEWING ANGLE	ALL		45		Degree	
CAPACITANCE	GREEN		16		pF	V _r = 0, f = 1 MHz
	RED		9.2			

ABSOLUTE MAXIMUM RATING AT 25°C AMBIENT	UNITS	GREEN	RED
POWER DISSIPATION	mW	75	60
DERATE LINEARLY FROM 50°C	mA/°C	0.5	0.5
CONTINUOUS FORWARD CURRENT	mA	25	20
PEAK FORWARD CURRENT (1/10 DUTY CYCLE, 0.1 ms PULSE WIDTH)	mA	60	60
LEAD SOLDERING TEMPERATURE (5 SEC., 1/16" FROM BODY)	°C	260	
OPERATING TEMPERATURE	°C	-25 TO 85	
STORAGE TEMPERATURE	°C	-30 TO 100	



- NOTES:
- LEADS TO FIT INTO HOLES SPACED AS PER HOLE PATTERN
 - LEADS TO BE FREE OF DEFORMATION AFTER BENDING AND CUTTING
 - LED LEAD DIMENSIONS SHOWN ARE MEASURED AT HOUSING EXIT
 - DIALIGHT PART NUMBER = 551-0004-834



THIS DRAWING AND THE CONTENTS HEREIN ARE CONFIDENTIAL AND THE SOLE PROPERTY OF DIALIGHT. REPRODUCTION OF THIS DRAWING OR CONSTRUCTION OF ANY PARTS WITHIN THIS DRAWING ARE FORBIDDEN WITHOUT THE WRITTEN CONSENT OF DIALIGHT.		
SCALE 5:1	DRAWING NUMBER	REV
ALL DIM'S IN: INCHES	C-16764	A
TOLERANCES: UNLESS OTHERWISE SPECIFIED	TITLE 1x4 CBI BLOCK	
FRACTIONS: ±1/64	MATERIAL	
DECIMALS (.XX): ±.020	Dialight	
DECIMALS (.XXXX): ±.015	1913 ATLANTIC AVE.	
ANGLES: ±3°	MANASQUAN, N.J. 08736	
FINISH:	FSCM 83330	SHEET OF FAMILY TABLE: