

Excellent Integrated System Limited

Stocking Distributor

Click to view price, real time Inventory, Delivery & Lifecycle Information:

[Dialight](#)
[5530008816F](#)

For any questions, you can email us directly:

sales@integrated-circuit.com

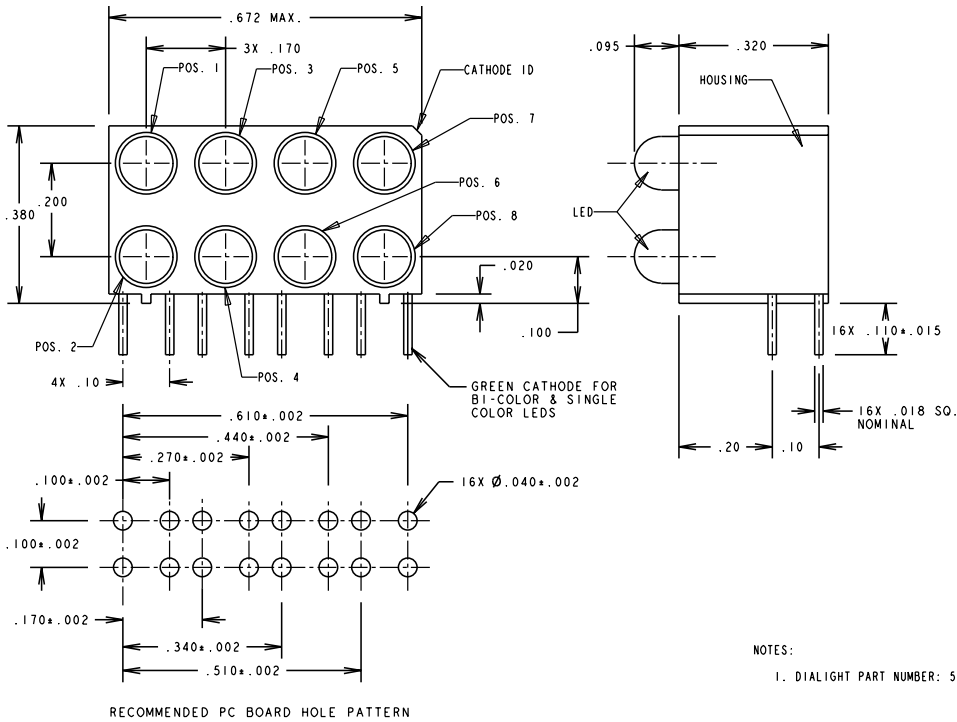


Distributor of Dialight: Excellent Integrated System Limited
 Datasheet of 5530008816F - LED CBI 3MM GRNS/YLWS 8BLOCK RA

Contact us: sales@integrated-circuit.com Website: www.integrated-circuit.com

PART NUMBER	POS. 1	POS. 2	POS. 3	POS. 4	POS. 5	POS. 6	POS. 7	POS. 8
553-0008-816	GREEN	G / Y	GREEN	G / Y	GREEN	G / Y	GREEN	G / Y

REV.	ECN NO.	REVISIONS	DRN.	CKD.	APP.	DATE
A		NEW RELEASE	TC		N.O.	6-19-96
B		REVISED GREEN LED SPECS, ADDED NOTE 1.	TC			



OPERATING CHARACTERISTICS AT T_A = 25 °C

SYMBOL	PARAMETER	COLOR	MIN	TYP	MAX	UNITS	TEST COND.
V _F	FORWARD VOLTAGE	GREEN	2.1	2.8		V	I _F = 20 mA
V _R	REVERSE VOLTAGE	GREEN	5			V	I _R = 100µA
λ _{PK}	PEAK WAVELENGTH	GREEN	565			nm	MEASURED AT PEAK
I _V	LUMINOUS INTENSITY	GREEN	32	50		mc d	I _F = 10 mA

BI-COLOR LEDES

OPERATING CHARACTERISTICS AT T_A = 25 °C

SYMBOL	PARAMETER	COLOR	MIN	TYP	MAX	UNITS	TEST COND.
V _F	FORWARD VOLTAGE	YELLOW	2.1	2.8		V	I _F = 10 mA
V _F	FORWARD VOLTAGE	GREEN	2.1	2.8		V	I _F = 10 mA
λ _{PK}	PEAK WAVELENGTH	YELLOW	585			nm	MEASURED AT PEAK
λ _{PK}	PEAK WAVELENGTH	GREEN	565			nm	MEASURED AT PEAK
I _V	LUMINOUS INTENSITY	YELLOW	2.5	4.3		mc d	I _F = 10 mA
I _V	LUMINOUS INTENSITY	GREEN	2.5	6.3		mc d	I _F = 10 mA

THIS DRAWING AND THE CONTENTS HEREIN ARE CONFIDENTIAL AND THE SOLE PROPERTY OF DIALIGHT. REPRODUCTION OF THIS DRAWING OR CONSTRUCTION OF ANY PARTS WITHIN THIS DRAWING ARE FORBIDDEN WITHOUT THE WRITTEN CONSENT OF DIALIGHT.

SCALE: 5:1	DRAWING NUMBER	REV
ALL DIM'S IN: INCHES	C-16100	B
TOLERANCES: UNLESS OTHERWISE SPECIFIED	TITLE	
FRACTIONS: ±1/64	MATERIAL	
DECIMALS (.XXX): ±.010	Dialight	
DECIMALS (.XXX): ±.003	1913 ATLANTIC AVE. MANASQUAN, N.J. 08736	
ANGLES: ±1°	SHEET OF FAMILY TABLE:	
FINISH:	FSCM 83330	

NOTES:
 1. DIALIGHT PART NUMBER: 553-0008-816