

Excellent Integrated System Limited

Stocking Distributor

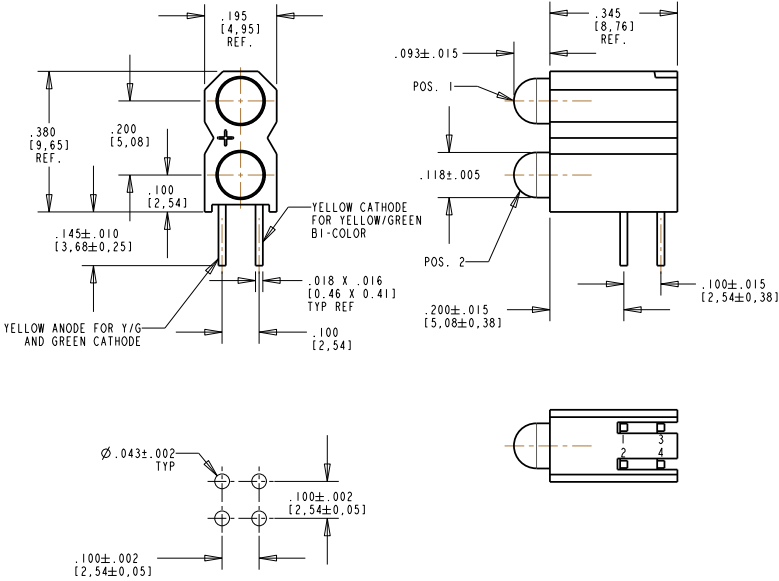
Click to view price, real time Inventory, Delivery & Lifecycle Information:

[Dialight](#)
[5530744850F](#)

For any questions, you can email us directly:
sales@integrated-circuit.com

PART NUMBER	LED COLOR	
	POSITION 1	POSITION 2
553-0744-850F	YELLOW/GREEN	YELLOW/GREEN

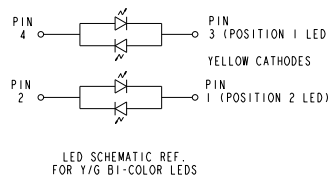
REV	ECN NO	REVISIONS	DRN	CKD	APP	DATE
A		NEW RELEASE		TWC		



RECOMMENDED HOLE PATTERN GAUGE

- NOTES:
- LEADS TO FIT INTO HOLES SPACED AS PER HOLE PATTERN.
 - LED LEAD DIMENSIONS SHOWN ARE MEASURED AT HOUSING EXIT.
 - PIN NUMBERS FOR REFERENCE ONLY, DESIGNATION NON-EXISTENT ON PARTS.
 - DIALIGHT PART NUMBER: 553-0744-850F.
 - PARTS PACKAGED IN TUBE, 88 PCS/TUBE WITH END PLUGS.
 - RoHS COMPLIANT LABEL WITH DIALIGHT P/N, DATE CODE, QTY/TUBE.

YELLOW ANODES AND GREEN CATHODES



CHARACTERISTICS	LED COLOR = GRN/YEL BI-COLOR		LED COLOR = RED/GRN BI-COLOR		UNITS	TEST CONDITIONS
	COLOR	MIN	TYP	MAX		
LUMINOUS INTENSITY	GREEN	2.5	6.3		mcd	I _f = 10 mA
	YELLOW	2.5	4.3			
FORWARD VOLTAGE	GREEN		2.1	2.8	V	I _f = 20 mA
	YELLOW		2.1	2.8		
PEAK WAVELENGTH	GREEN		565		nm	I _f = 20 mA
	YELLOW		585			
VIEWING ANGLE	GREEN		80		DEGREES	
	YELLOW		80			

ABSOLUTE MAXIMUM RATINGS AT 25°C AMBIENT

	GREEN	YELLOW	UNITS
POWER DISSIPATION	100	60	mW
DERATE LINEARLY FROM 50°C	0.4	0.25	mW/°C
CONTINUOUS FORWARD CURRENT	30	20	mA
PEAK FORWARD CURRENT (1/10 DUTY CYCLE, 10 ms PULSE WIDTH)	120		mA
PEAK FORWARD CURRENT (1/10 DUTY CYCLE, 0.1 ms PULSE WIDTH)	120	80	mA
LEAD SOLDERING TEMPERATURE, 6 SEC., 1/16" FROM BASE	260	260	°C
LEAD SOLDERING TEMPERATURE, 5 SEC., 1/16" FROM BASE	260	260	°C
OPERATING TEMPERATURE	-55 TO +100		°C
STORAGE TEMPERATURE	-55 TO +100		°C

RoHS Compliant 553-0744-850F Thru hole CBI

Part Numbers with the "F" suffix ending are RoHS Compliant.
 Example: 553-0744-850F
 Packaging is marked with "RoHS Compliant" label or equivalent markings.
 Parts can be wave soldered, dip soldered or hand soldered using typical lead-free soldering process with max 260°C temp. for 5 sec.

THIS DRAWING AND THE CONTENTS HEREIN ARE CONFIDENTIAL AND THE SOLE PROPERTY OF DIALIGHT. REPRODUCTION OF THIS DRAWING OR CONSTRUCTION OF ANY PARTS WITHIN THIS DRAWING ARE FORBIDDEN WITHOUT THE WRITTEN CONSENT OF DIALIGHT.	
SCALE: 4:1000	DRAWING NUMBER
TOLERANCES: UNLESS OTHERWISE SPECIFIED	C-17329
FRACTIONS: ±1/64	REV
DECIMALS (.XX): ±.01	A
DECIMALS (.XXX): ±.005	TITLE
ANGLES: ±1°	3mm BI-LEVEL LED CBI
FINISH:	MATERIAL
FSCM 83330	Dialight
	1501 ROUTE 34 SOUTH, FARMINGDALE, NJ 07727
	SHEET 1 OF 1 FAMILY TABLE: