

## Excellent Integrated System Limited

Stocking Distributor

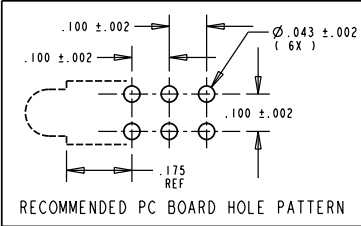
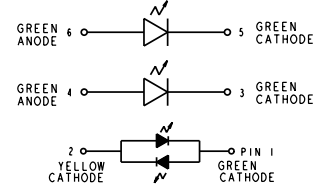
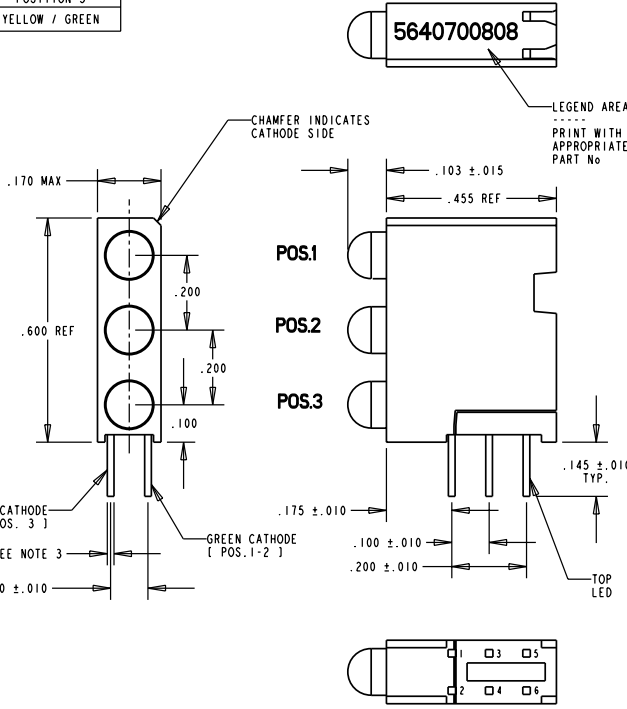
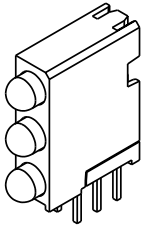
Click to view price, real time Inventory, Delivery & Lifecycle Information:

[Dialight](#)  
[5640700808F](#)

For any questions, you can email us directly:  
[sales@integrated-circuit.com](mailto:sales@integrated-circuit.com)

PART NUMBER and LEGEND	LED COLOR		
	POSITION 1	POSITION 2	POSITION 3
564-0700-808	GREEN DIFFUSED	GREEN DIFFUSED	YELLOW / GREEN

REV.	ECN NO.	REVISIONS	DRN.	CKD.	APP.	DATE
A		NEW RELEASE	LR		W.O.	11-29-94
B		CONVERTED TO NEW "BOTTOM" INSERT DESIGN; ADDED NOTES 4-6.	TC			



NOTES:

- LEADS TO FIT INTO HOLES SPACED AS PER HOLE PATTERN
- PIN NUMBERS FOR REFERENCE ONLY, DESIGNATION NON-EXISTENT ON PARTS.
- POS. 1-2 = .020 SQ.
- POS. 3 = .018 SQ.
- LEADS TO BE FREE OF DEFORMATION AFTER BENDING AND CUTTING
- LED LEAD DIMENSIONS SHOWN ARE MEASURED AT HOUSING EXIT
- DIALIGHT PART NUMBER: 564-0700-808

OPERATING CHARACTERISTICS AT T<sub>A</sub> = 25°C

SYMBOL	PARAMETER	COLOR	MIN	TYP	MAX	UNITS	TEST COND.
V <sub>F</sub>	FORWARD VOLTAGE	GREEN	1.5	2.3	3.0	V	I <sub>F</sub> : 10 mA
V <sub>R</sub>	REVERSE VOLTAGE	ALL	5			V	I <sub>R</sub> : 100µA
λ <sub>PEAK</sub>	PEAK WAVELENGTH	GREEN		565		nm	MEASURED AT PEAK
I <sub>V</sub>	LUMINOUS INTENSITY	GREEN	4.0	8.5		mc d	I <sub>F</sub> : 10 mA

BI-COLOR LEDS  
OPERATING CHARACTERISTICS AT T<sub>A</sub> = 25°C

SYMBOL	PARAMETER	COLOR	MIN	TYP	MAX	UNITS	TEST COND.
V <sub>F</sub>	FORWARD VOLTAGE	YELLOW		2.0	2.6	V	I <sub>F</sub> : 10 mA
V <sub>F</sub>	FORWARD VOLTAGE	GREEN		2.0	2.6	V	I <sub>F</sub> : 10 mA
λ <sub>PEAK</sub>	PEAK WAVELENGTH	YELLOW		585		nm	
λ <sub>PEAK</sub>	PEAK WAVELENGTH	GREEN		565		nm	
I <sub>V</sub>	LUMINOUS INTENSITY	YELLOW		2.5		mc d	I <sub>F</sub> : 10 mA
I <sub>V</sub>	LUMINOUS INTENSITY	GREEN		2.5		mc d	I <sub>F</sub> : 10 mA

THIS DRAWING AND THE CONTENTS HEREIN ARE CONFIDENTIAL AND THE SOLE PROPERTY OF DIALIGHT. REPRODUCTION OF THIS DRAWING OR CONSTRUCTION OF ANY PARTS WITHIN THIS DRAWING ARE FORBIDDEN WITHOUT THE WRITTEN CONSENT OF DIALIGHT.	
SCALE: 4:1	DRAWING NUMBER
ALL DIM'S IN: INCHES	REV
TOLERANCES: UNLESS OTHERWISE SPECIFIED	C-15929
FRACTIONS: ±1/64	TITLE
DECIMALS (.XX): ±.020	STANDARD 3X1 CBI BLOCK
DECIMALS (.XXX): ±.015	MATERIAL
DECIMALS (.XXXX): ±.010	
ANGLES: ±1°	
FINISH:	
FSCM 83330	Dialight 1913 ATLANTIC AVE. MANASQUAN, N.J. 08736
	SHEET OF FAMILY TABLE: