

Excellent Integrated System Limited

Stocking Distributor

Click to view price, real time Inventory, Delivery & Lifecycle Information:

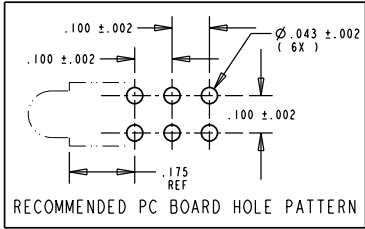
[Dialight](#)
[5640700813F](#)

For any questions, you can email us directly:
sales@integrated-circuit.com

REV.	ECN NO.	REVISIONS	DRN.	CKD.	APP.	DATE
A		NEW RELEASE	TC			

PART NUMBER and LEGEND	LED COLOR		
	POSITION 1	POSITION 2	POSITION 3
564-0700-813	YELLOW / GREEN	** BLANK **	GREEN (LOW CUR)

- NOTES:
- LEADS TO FIT INTO HOLES SPACED AS PER HOLE PATTERN
 - PIN NUMBERS FOR REFERENCE ONLY. DESIGNATION NON-EXISTENT ON PARTS.
 - LEADS TO BE FREE OF DEFORMATION AFTER BENDING AND CUTTING
 - LED LEAD DIMENSIONS SHOWN ARE MEASURED AT HOUSING EXIT
 - .018 SQ. NOM. (SINGLE COLOR)
 - .020 SQ. NOM. (BI-COLOR)
 - DIALIGHT PART NUMBER: 564-0700-813

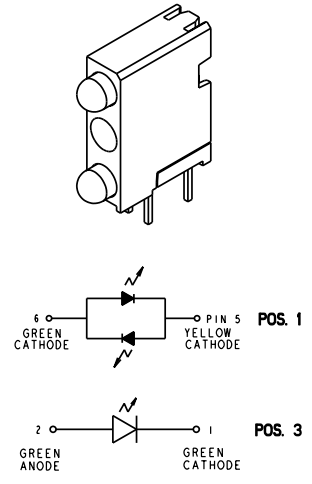
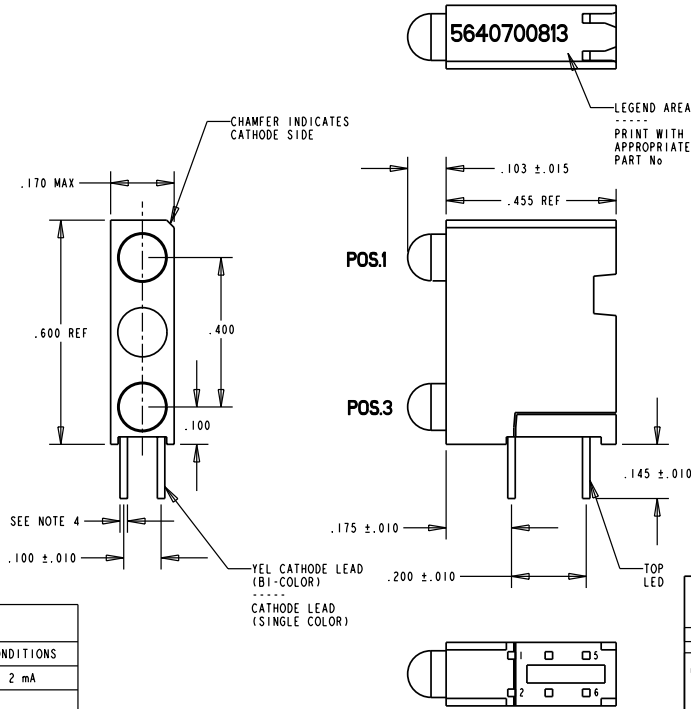


BI-COLOR LEDS
OPERATING CHARACTERISTICS AT T_A = 25°C

SYMBOL	PARAMETER	COLOR	MIN	TYP	MAX	UNITS	TEST COND.
V _F	FORWARD VOLTAGE	YELLOW GREEN	2.0	2.6	2.6	V	I _F = 10 mA
λ _D	PEAK WAVELENGTH	YELLOW GREEN	585			nm	
I _V	LUMINOUS INTENSITY	YELLOW GREEN	2.5			mc d	I _F = 10 mA

LED COLOR = GREEN DIFFUSED (LOW CURRENT)
OPERATING CHARACTERISTICS AT 25°C AMBIENT

CHARACTERISTICS	MIN	TYP	MAX	UNITS	TEST CONDITIONS
LUMINOUS INTENSITY	1.0	2.1		mc d	I _F = 2 mA
PEAK WAVELENGTH		565		nm	
FORWARD VOLTAGE		1.8	2.2	mA	I _F = 2 mA
REVERSE VOLTAGE	5			V	I _R = 50 μA
VIEWING ANGLE		50		Deg.	



THIS DRAWING AND THE CONTENTS HERE IN ARE CONFIDENTIAL AND THE SOLE PROPERTY OF DIALIGHT. REPRODUCTION OF THIS DRAWING OR CONSTRUCTION OF ANY PARTS WITHIN THIS DRAWING ARE FORBIDDEN WITHOUT THE WRITTEN CONSENT OF DIALIGHT.

SCALE 4:1

ALL DIM'S IN: INCHES	DRAWING NUMBER	REV
TOLERANCES: UNLESS OTHERWISE SPECIFIED	C-16601	A
FRACTIONS: ±1/64	TITLE	STANDARD 3X1 CBI BLOCK
DECIMALS (.XX): ±.020	MATERIAL	
DECIMALS (.XXX): ±.015		
DECIMALS (.XXXX): ±.010		
ANGLES: ±1°		
FINISH:		
FSCM 83330	Dialight	1913 ATLANTIC AVE. MANASQUAN, N.J. 08736
	SHEET OF	FAMILY TABLE: