

Excellent Integrated System Limited

Stocking Distributor

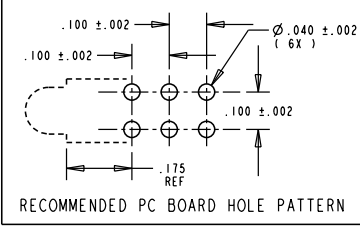
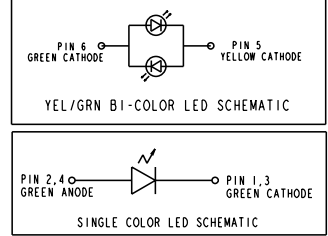
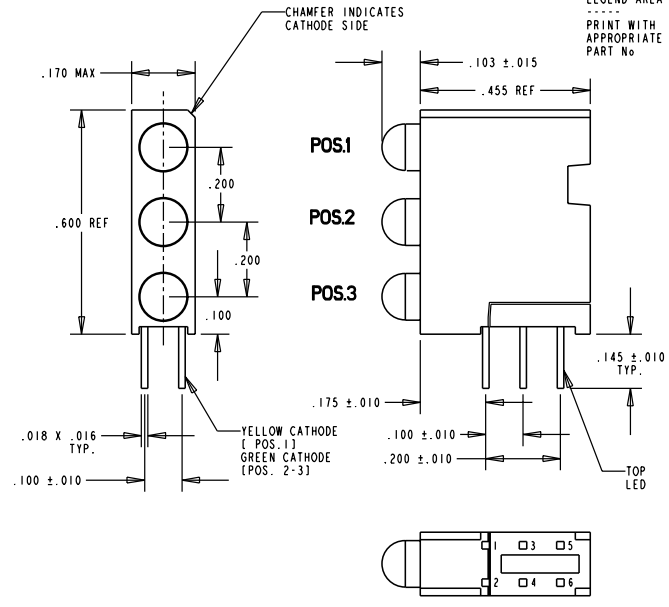
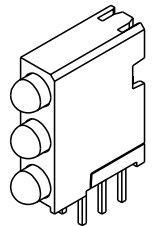
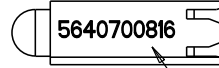
Click to view price, real time Inventory, Delivery & Lifecycle Information:

[Dialight](#)
[5640700816F](#)

For any questions, you can email us directly:
sales@integrated-circuit.com

| REV. | ECN NO. | REVISIONS | DRN. | CKD. | APP. | DATE |
|------|---------|-------------|------|------|------|------|
| A | | NEW RELEASE | DC | | | |

| PART NUMBER and LEGEND | LED COLOR | | |
|---------------------------|----------------|----------------|----------------|
| | POSITION 1 | POSITION 2 | POSITION 3 |
| 564-0700-816 | YELLOW / GREEN | GREEN DIFFUSED | GREEN DIFFUSED |



- NOTES:
- LEADS TO FIT INTO HOLES SPACED AS PER HOLE PATTERN
 - PIN NUMBERS FOR REFERENCE ONLY, DESIGNATION NON-EXISTENT ON PARTS.
 - LEADS TO BE FREE OF DEFORMATION AFTER BENDING AND CUTTING
 - LED LEAD DIMENSIONS SHOWN ARE MEASURED AT HOUSING EXIT
 - DIALIGHT PART NUMBER: 564-0700-816

OPERATING CHARACTERISTICS AT T_A = 25°C

| SYMBOL | PARAMETER | COLOR | MIN | TYP | MAX | UNITS | TEST COND. |
|-------------------|--------------------|-------|-----|------|-----|-------|------------------------|
| V _F | FORWARD VOLTAGE | GREEN | 2.1 | 2.8 | | V | I _F : 20 mA |
| I _R | REVERSE CURRENT | GREEN | | | 100 | µA | V _R : 5 V |
| λ _{PEAK} | PEAK WAVELENGTH | GREEN | 565 | | | nm | MEASURED AT PEAK |
| I _V | LUMINOUS INTENSITY | GREEN | 4.7 | 12.6 | | mc d | I _F : 10 mA |

YEL/GRN BI-COLOR LEDS
OPERATING CHARACTERISTICS AT T_A = 25°C

| SYMBOL | PARAMETER | COLOR | MIN | TYP | MAX | UNITS | TEST COND. |
|-------------------|--------------------|-----------------|-----|-----|-----|-------|------------------------|
| V _F | FORWARD VOLTAGE | YELLOW GREEN | 2.1 | 2.8 | | V | I _F : 20 mA |
| λ _{PEAK} | PEAK WAVELENGTH | YELLOW GREEN | 585 | 565 | | nm | |
| I _V | LUMINOUS INTENSITY | YELLOW GREEN | 2.5 | | | mc d | I _F : 10 mA |

THIS DRAWING AND THE CONTENTS HEREIN ARE CONFIDENTIAL AND THE SOLE PROPERTY OF DIALIGHT. REPRODUCTION OF THIS DRAWING OR CONSTRUCTION OF ANY PARTS WITHIN THIS DRAWING ARE FORBIDDEN WITHOUT THE WRITTEN CONSENT OF DIALIGHT.

SCALE: 4:1

| | |
|--|------------------------|
| DRAWING NUMBER | REV |
| C-16726 | A |
| TITLE: STANDARD 3X1 CBI BLOCK | |
| MATERIAL: | |
| Dialight 1913 ATLANTIC AVE. MANASQUAN, N.J. 08736 | |
| FSCM 83330 | SHEET OF FAMILY TABLE: |