

## Excellent Integrated System Limited

Stocking Distributor

Click to view price, real time Inventory, Delivery & Lifecycle Information:

[Dialight](#)  
[5660208F](#)

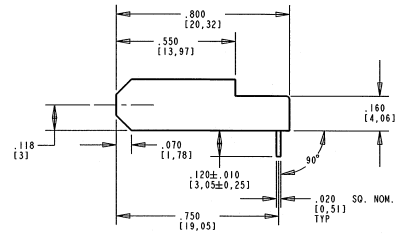
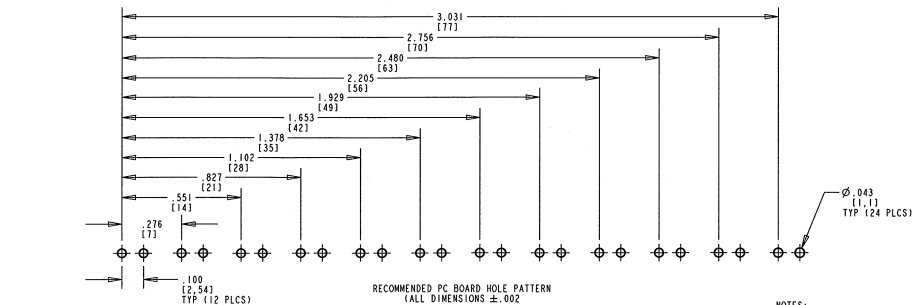
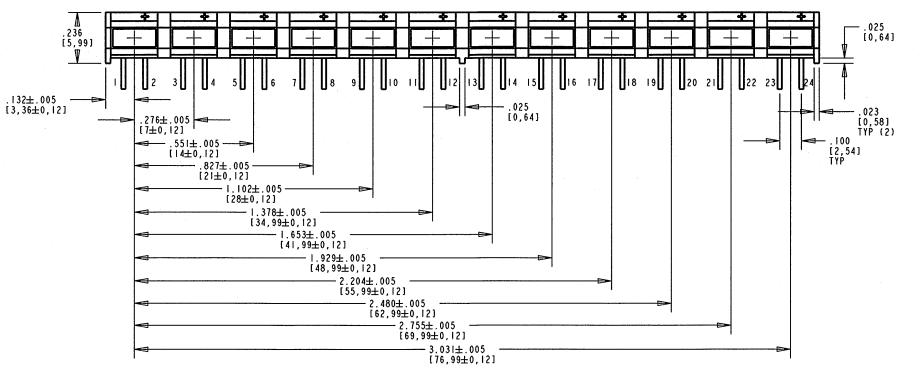
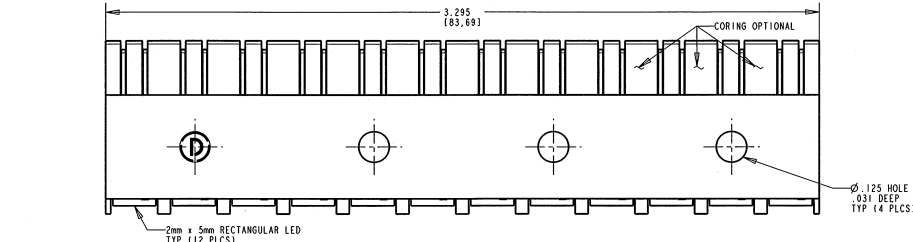
For any questions, you can email us directly:  
[sales@integrated-circuit.com](mailto:sales@integrated-circuit.com)



**Distributor of Dialight: Excellent Integrated System Limited**  
 Datasheet of 5660208F - LED 2X5MM 12LED ARRAY GRN DIFF

DIALIGHT PART NUMBER	COLOR
566-0208F	GREEN DIFFUSED
566-0308F	YELLOW DIFFUSED
566-0408F	RED DIFFUSED

REV	ECN NO	REVISIONS	DRN	CKD	APP	DATE
A		NEW RELEASE	KUJ	TD	BJ	9/28/12

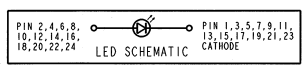


ABSOLUTE MAXIMUM RATINGS AT 25°C AMBIENT			
POWER DISSIPATION	mW	100	60
DERATE LINEARLY FROM 50°C	mW/°C	0.4	0.25
CONTINUOUS FORWARD CURRENT	mA	30	20
PEAK FORWARD CURRENT (1/10 DUTY CYCLE, 0.1ms PULSE WIDTH)	mA	120	80
LEAD SOLDERING TEMPERATURE, 5 SEC., 1/16" FROM BODY	°C	260	
OPERATING TEMPERATURE	°C	-55 TO +100	
STORAGE TEMPERATURE	°C	-55 TO +100	

OPERATING CHARACTERISTICS AT TA=25°C					
V <sub>f</sub>	FORWARD VOLTAGE	RED	MIN.	TYP.	MAX.
		YELLOW	2.0	2.8	
		GREEN	2.1	2.6	
V <sub>k</sub>	ALL			5	V
					I <sub>k</sub> : 100µA
λ <sub>p</sub>	PEAK WAVELENGTH	RED		635	nm
		YELLOW		565	
		GREEN		565	
I <sub>v</sub>	LUMINOUS INTENSITY	RED	3.0	7.4	mc/d
		YELLOW	2.2	7.4	
		GREEN	2.2	7.4	



**RoHS COMPLIANT 566-0X08F**  
 Part Numbers with the "F" suffix ending are RoHS Compliant. For example: 566-0208F.  
 Packaging is marked with "RoHS Compliant" label or equivalent markings. Parts can be wave soldered, dip soldered or hand soldered using typical lead-free soldering process with max 260°C temp. for 5 sec.



- NOTES:
- LED LEAD DIMENSIONS SHOWN ARE MEASURED AT HOUSING EXIT.
  - LEADS TO FIT INTO HOLES SPACED AS PER PATTERN.
  - PIN NUMBERS FOR REFERENCE ONLY. DESIGNATION NON-EXISTENT ON PART.
  - DIALIGHT PART NUMBERS: 566-0208F, 566-0308F, 566-0408F
  - THIS ASSEMBLY CONTAINS ELECTROSTATIC DISCHARGE SENSITIVE DEVICES (ESDS). MAINTAIN ALL PRECAUTIONARY MEASURES DURING ASSEMBLY, HANDLING, AND STORAGE IN ACCORDANCE WITH IPC-A-610.

THIS DRAWING AND THE CONTENTS HEREIN ARE CONFIDENTIAL AND THE SOLE PROPERTY OF DIALIGHT. REPRODUCTION OF THIS DRAWING OR CONSTRUCTION OF ANY PARTS WITHIN THIS DRAWING ARE FORBIDDEN WITHOUT THE WRITTEN CONSENT OF DIALIGHT.

SCALE: 3:000	DRAWING NUMBER	REV
ALL DIM'S IN INCHES UNLESS OTHERWISE SPECIFIED	C-17605	A
FRACTIONS: 1/16, 1/32, 1/64	TITLE	MATERIAL
DECIMALS: 0.001, 0.002, 0.005, 0.010, 0.020, 0.050, 0.100	2mm x 5mm RECTANGULAR LED CS1-12 LED ARRAY, RoHS COMPLIANT	
FINISH:	Dialight	1501 ROUTE 34 SOUTH FARMINGDALE, NJ 07727
FSC 83330	SHEET 1 OF 1 FAMILY TABLE	