

Excellent Integrated System Limited

Stocking Distributor

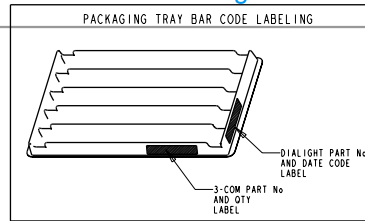
Click to view price, real time Inventory, Delivery & Lifecycle Information:

[Dialight](#)
[5680016803F](#)

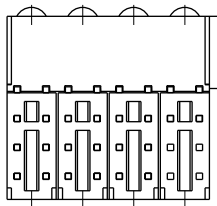
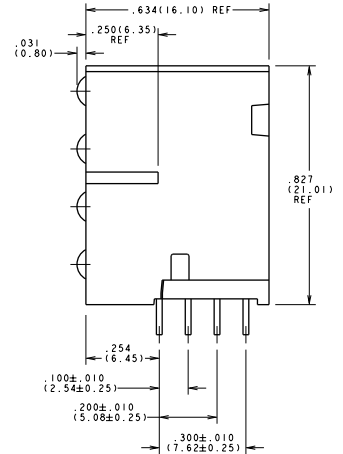
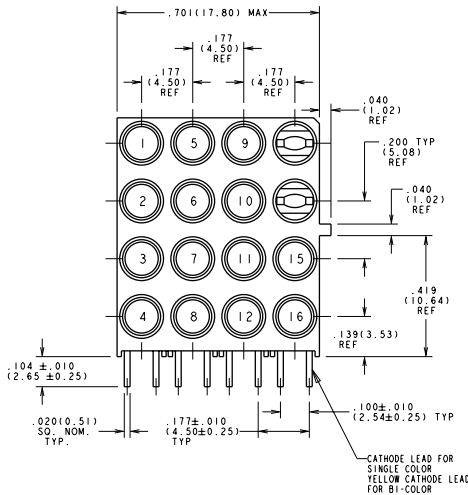
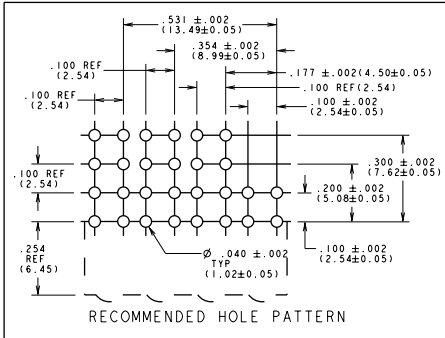
For any questions, you can email us directly:

sales@integrated-circuit.com

LED COLOR							
POS #	COLOR	POS #	COLOR	POS #	COLOR	POS #	COLOR
1	YELLOW	5	YELLOW	9	YELLOW	13	-BLANK-
2	GREEN	6	GREEN	10	GREEN	14	-BLANK-
3	YELLOW	7	YELLOW	11	YELLOW	15	YELLOW
4	GREEN	8	GREEN	12	GREEN	16	YELLOW



REV.	ECN NO.	REVISIONS	DRN.	CKD.	APP.	DATE
A		NEW RELEASE	AV			12-15-97
B		ADDED mm DIMENSIONS -- 031 (0.50) WAS .324(0.51) ADDED .177 ± 0.01(4.50 ± 0.25) DIM.: RELOCATED TAB.	TC		N.O.	1-28-98
C		LED B16 WAS YELLOW/GREEN.	AV		N.O.	3-10-98
D		104 ± 0.01(2.65 ± 0.25) WAS .090 ± 0.01(2.29 ± 0.25); REMOVED "REF" FROM DIMENSIONS ON SIDE VIEW; ADDED HOUSING CUTOUT AND REVISED SLOT ON INSERT.	TC	AV	NO	9-9-98
E		ADD PACKAGING INFO	AV	DC	N.O.	2-25-99
F		REMOVED 3cm PD LABEL FROM TRAY.	TC			



- NOTES :
- 3-COM PART NUMBER = 7320-455-006 REF
 - ALL DIMENSIONS ARE IN INCHES (mm)
 - PACKAGING = 75 BLOCKS PER TRAY
 - DIALIGHT PART NUMBER = 568-0016-803

THIS DRAWING AND THE CONTENTS HEREIN ARE CONFIDENTIAL AND THE SOLE PROPERTY OF DIALIGHT. REPRODUCTION OF THIS DRAWING OR CONSTRUCTION OF ANY PARTS WITHIN THIS DRAWING ARE FORBIDDEN WITHOUT THE WRITTEN CONSENT OF DIALIGHT.

SCALE	ECN	DRAWING NUMBER	REV
		C-16318	F
TITLE		(4x4) CBI BLOCK (RH)	
MATERIAL			
FINISH:		Dialight	
FSCM 83330		1913 ATLANTIC AVE. MANASQUAN, N.J. 08736	
SHEET		OF FAMILY TABLES:	

GREEN LED SPEC					
OPERATING CHARACTERISTICS AT 25° C AMBIENT					
LED CHARACTERISTICS	MIN.	TYP.	MAX.	UNITS	TEST CONDITIONS
LUMINOUS INTENSITY	4.7	12.6		mc d	$I_f = 10 \text{ mA}$
FORWARD VOLTAGE		2.1	2.8	V	$I_f = 20 \text{ mA}$
PEAK EMISSION WAVELENGTH		565		nm	
REVERSE CURRENT			100	μA	$V_R = 5 \text{ V}$
VIEWING ANGLE (2 ϕ 1/2)		60		DEGREES	
CAPACITANCE		35		pF	$V_R = 0 \text{ V}, f = 1 \text{ MHz}$

YELLOW LED SPEC					
OPERATING CHARACTERISTICS AT 25° C AMBIENT					
LED CHARACTERISTICS	MIN.	TYP.	MAX.	UNITS	TEST CONDITIONS
LUMINOUS INTENSITY	7.4	10.0		mc d	$I_f = 10 \text{ mA}$
FORWARD VOLTAGE		2.1	2.8	V	$I_f = 20 \text{ mA}$
PEAK EMISSION WAVELENGTH		585		nm	
REVERSE CURRENT			100	μA	$V_R = 5 \text{ V}$
VIEWING ANGLE (2 ϕ 1/2)		60		DEGREES	
CAPACITANCE		15		pF	$V_R = 0 \text{ V}, f = 1 \text{ MHz}$