

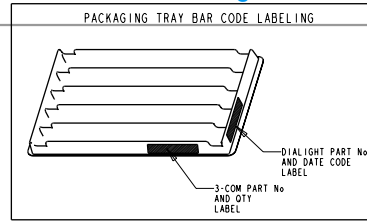
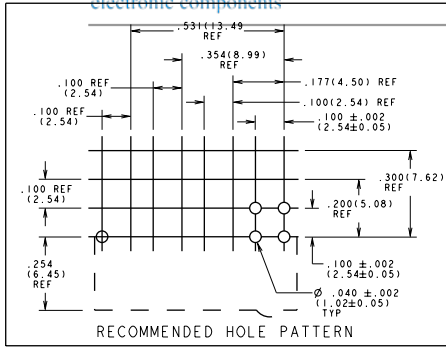
## Excellent Integrated System Limited

Stocking Distributor

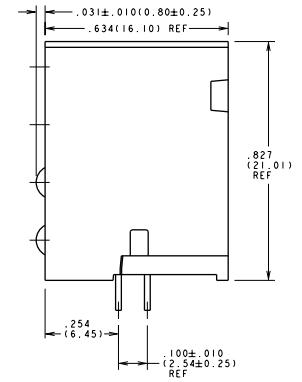
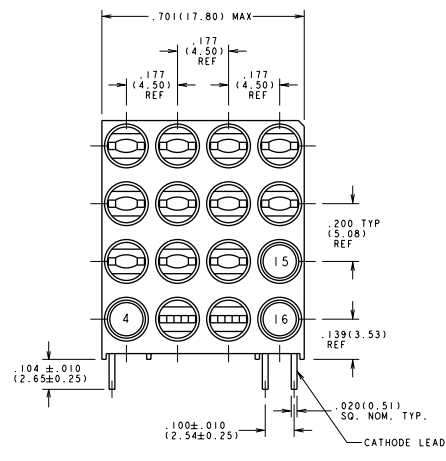
Click to view price, real time Inventory, Delivery & Lifecycle Information:

[Dialight](#)  
[5680016804F](#)

For any questions, you can email us directly:  
[sales@integrated-circuit.com](mailto:sales@integrated-circuit.com)

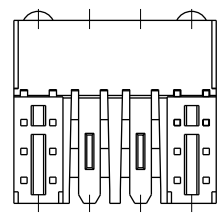


| REV. | ECN NO. | REVISIONS  | DRN. | CHK. | APP. | DATE            |
|------|---------|--|------|------|------|-----------------|
| A    |         | NEW RELEASE  |      |      | AV   | N.O. 12-15-97   |
| B    |         | ADDED .031 INCH DIMENSIONS; ADDED 2 INSERTS ON BOTTOM VIEW   |      |      | TC   | N.O. 1-28-98    |
| C    |         | .104 ± .010 (2.65 ± 0.25) WAS .090 ± .010 (2.29 ± 0.25); REMOVED "REF" FROM DIMENSIONS ON SIDE VIEW; ADDED HOUSING CUTOUT AND REVISED SLOT ON INSERT; ADDED NOTE 3; ADDED LEAD POS. 4, 5 ON TABLE POS. 16 YELLOW WAS YELLOW. |      |      | TC   | AV NO 9-9-98    |
| D    |         | ADD PACKAGING INFO   |      |      | AV   | DC N.O. 2-25-99 |
| E    |         | REMOVED 3com PD LABEL FROM TRAY  |      |      | TC   |                 |



| LED COLOR |            |       |         |       |         |       |         |
|-----------|------------|-------|---------|-------|---------|-------|---------|
| POS #     | COLOR      | POS # | COLOR   | POS # | COLOR   | POS # | COLOR   |
| 1         | -BLANK-    | 5     | -BLANK- | 9     | -BLANK- | 13    | -BLANK- |
| 2         | -BLANK-    | 6     | -BLANK- | 10    | -BLANK- | 14    | -BLANK- |
| 3         | -BLANK-    | 7     | -BLANK- | 11    | -BLANK- | 15    | YELLOW  |
| 4         | SEE NOTE 3 | 8     | -BLANK- | 12    | -BLANK- | 16    | YELLOW  |

| YELLOW LED SPEC                            |      |      |      |         |                                 |
|--|------|------|------|---------|---------------------------------|
| OPERATING CHARACTERISTICS AT 25° C AMBIENT |      |      |      |         |                                 |
| LED CHARACTERISTICS                        | MIN. | TYP. | MAX. | UNITS   | TEST CONDITIONS                 |
| LUMINOUS INTENSITY                         | 7.4  | 10.0 |      | mcd     | I <sub>f</sub> = 10 mA          |
| FORWARD VOLTAGE                            |      | 2.1  | 2.8  | V       | I <sub>f</sub> = 20 mA          |
| PEAK EMISSION WAVELENGTH                   |      | 585  |      | nm      |                                 |
| REVERSE CURRENT                            |      |      | 100  | µA      | @ V <sub>r</sub> = 5 V          |
| VIEWING ANGLE (2θ 1/2)                     |      | 60   |      | DEGREES |                                 |
| CAPACITANCE                                |      | 15   |      | pF      | V <sub>b</sub> = 0 V, f = 1 MHz |



- NOTES :
- 3-COM PART NUMBER = 7320-455-009 REF
  - ALL DIMENSIONS ARE IN INCHES (mm)
  - YELLOW LED USED (NON-FUNCTIONAL) WITH ONLY 1 LEAD PROTRUDING FROM BOTTOM OF HOUSING FOR ALIGNMENT PURPOSE
  - PACKAGING = BLOCKS PLACED IN CLEAR ANTISTATIC TRAY 80 BLOCKS PER TRAY
  - DIALIGHT PART NUMBER = 568-0016-804

|   |   |
|---|---|
| THIS DRAWING AND THE CONTENTS HEREIN ARE CONFIDENTIAL AND THE SOLE PROPERTY OF DIALIGHT. REPRODUCTION OF THIS DRAWING OR CONSTRUCTION OF ANY PARTS WITHIN THIS DRAWING ARE FORBIDDEN WITHOUT THE WRITTEN CONSENT OF DIALIGHT. |   |
| SCALE: 1:1  | DRAWING NUMBER                                    |
| ALL DIM'S IN: INCHES  | C-16319   |
| TOLERANCES: UNLESS OTHERWISE SPECIFIED  | REV E   |
| FRACTIONS: 1/164  | TITLE (4x4) CBI BLOCK                             |
| DECIMALS: 1.001; 0.001  | MATERIAL  |
| DECIMALS: 1.001; 0.015  |   |
| ANGLES: n°  |   |
| FINISH: n°  |   |
| FSCM 83330  | Dialight 1913 ATLANTIC AVE. MANASQUAN, N.J. 08736 |
|   | SHEET OF FAMILY TABLES:                           |