

Excellent Integrated System Limited

Stocking Distributor

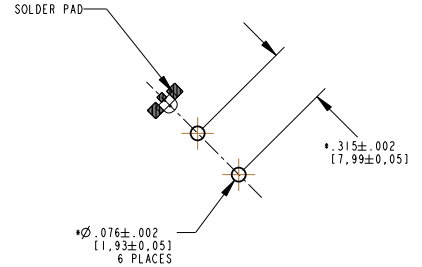
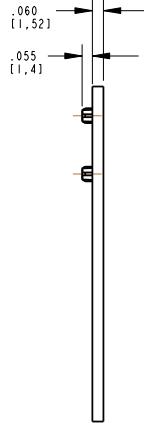
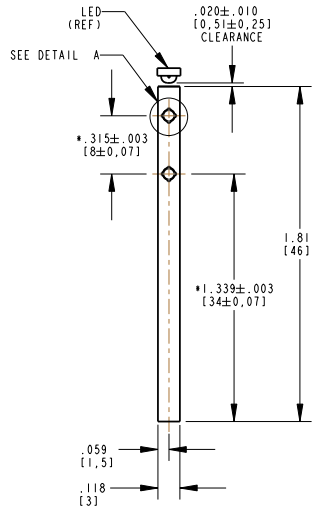
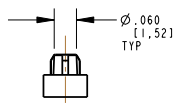
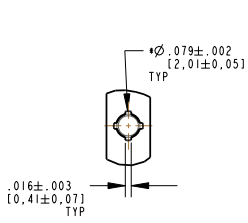
Click to view price, real time Inventory, Delivery & Lifecycle Information:

[Dialight](#)
[5151154F](#)

For any questions, you can email us directly:
sales@integrated-circuit.com

REV	ECN NO	REVISIONS	DRN	CKD	APP	DATE
A		NEW RELEASE		TWC		

* DENOTES CRITICAL DIMENSION OR SPECIFICATION



RECOMMENDED HOLE PATTERN LAYOUT FOR 1 POSITION STRAIGHT LIGHTPIPE 515-1154F

RoHS Compliant 515-1154F Lightpipe

Part Numbers with the "F" suffix ending are RoHS Compliant. Packaging is marked with "RoHS Compliant" label or equivalent markings.

NOTES:

1. COMPONENT MOLDED IN A CLEAR TRANSMISSIVE POLYCARBONATE, UL 94V-0 GRADE.
2. COMPONENT DESIGNED TO BE PRESSED INTO P.C. BOARD.
3. DIALIGHT LIGHTPIPE PART NUMBER: 515-1154F
4. RECOMMENDED LIGHT SOURCE: RT. ANGLE 1208 PKG (.120 X .080 X .040" HIGH)
5. 597-2751-602F FOR 20 PC SAMPLE STRIP, -607F FOR FULL REEL R/G/B TRI-COLOR
6. 597-2712-602F FOR 20 PC SAMPLE STRIP, -607F FOR FULL REEL R/G/B TRI-COLOR
6. ALL SURFACES ARE POLISHED WITH EXCEPTION OF PRESS FIT PINS.

THIS DRAWING AND THE CONTENTS HEREIN ARE CONFIDENTIAL AND THE SOLE PROPERTY OF DIALIGHT. REPRODUCTION OF THIS DRAWING OR CONSTRUCTION OF ANY PARTS WITHIN THIS DRAWING ARE FORBIDDEN WITHOUT THE WRITTEN CONSENT OF DIALIGHT.	
SCALE: 2.000	DRAWING NUMBER
ALL DIM'S IN: INCHES (MM)	C-17360
TOLERANCES: UNLESS OTHERWISE SPECIFIED	REV
FRACTIONS: ±1/64	A
DECIMALS (.XX): ±.01	TITLE LIGHTPIPE, STRAIGHT, SINGLE
DECIMALS (.XXX): ±.005	RoHS COMPLIANT
FINISH:	MATERIAL
FSCM 83330	Dialight 1501 ROUTE 34 SOUTH, FARMINGDALE, NJ 07727
	SHEET 1 OF 1 FAMILY TABLE: