



Excellent Integrated System Limited

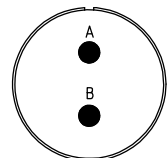
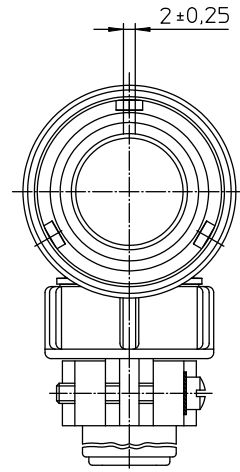
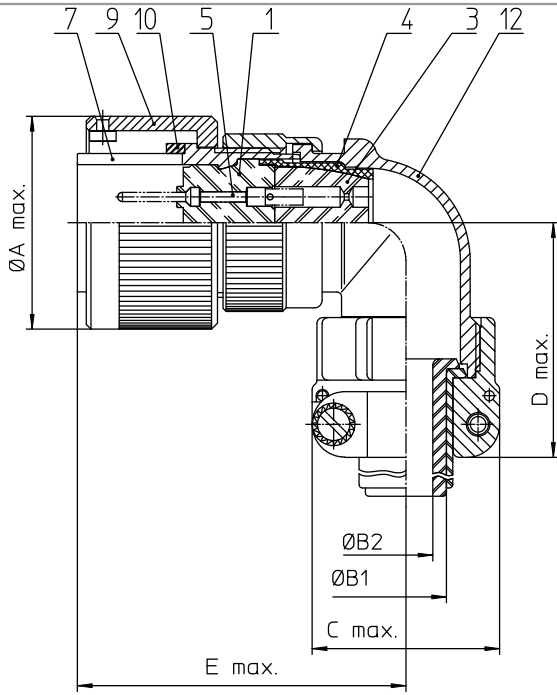
Stocking Distributor

Click to view price, real time Inventory, Delivery & Lifecycle Information:

[ITT Cannon, LLC](#)
[CA3108E16-11PYBF80](#)

For any questions, you can email us directly:

sales@integrated-circuit.com



| NO. | MASSE / DIMENSION |
|-----|-------------------|
| A | 32 |
| B1 | 11,1 |
| B2 | - |
| C | 30 |
| D | 45 |
| E | 57 |

| NO. | BESCHREIBUNG / DESCRIPTION |
|-----|-------------------------------------|
| 1 | ISOLIERKÖRPER STIFT / INSULATOR PIN |
| 3 | DICHTKÖRPER / GROMMET |
| 4 | ENDRING / ENDRING |
| 5 | KONTAKTSTIFT / CONTACT PIN |
| 7 | ZYLINDERGHÄUSE / BARREL |
| 9 | ÜBERWURFMUTTER / COUPLING NUT |
| 10 | DICHRING FRONT / FRONT SEALING RING |
| 12 | ENDEGHÄUSE / ENDBELL |

Note: Due to an automatic nomenclature system, numbers generated may not be sequential.
Specification and Dimensions subject to change
Drawings illustrate normal insulator positioning

| Material Specification: | |
|-------------------------|---|
| Shell Material: | Aluminium alloy |
| Shell Plating: | Olive drab chromate over cadmium (conductive) |
| Insulator Material: | CR-Elastomere |
| Contact Material: | Copper alloy |
| Contact Plating: | Hard silver |

all dimensions are in mm
Dimensions without tolerance indications are general tolerances in acc. with DIN7168m

drawing for CUSTOMER

| | | |
|---|---|---------------------|
| <p>ITT Engineered for life ITT Cannon GmbH ITT Cannon GmbH ITT Cannon Germany</p> | description | CA3108E16-11PYB-F80 |
| | Plug 90° Endbell with clamp and bushing AWG Crimp / Pin / Layout: 16-11 | |
| © All rights reserved. Reproduction or reuse in any form without the prior written authorization of ITT Cannon. | page 01/1 revision 788-4, Jul 16 | |