

## Excellent Integrated System Limited

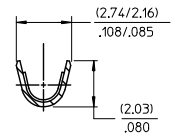
Stocking Distributor

Click to view price, real time Inventory, Delivery & Lifecycle Information:

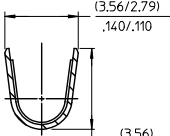
[Molex Connector Corporation](#)  
[02-06-5102](#)

For any questions, you can email us directly:  
[sales@integrated-circuit.com](mailto:sales@integrated-circuit.com)

PART NO.	ENG. NO.
02-06-1101	1561-1P901
02-06-1103	1561-1P901L
02-06-5101	1561-1P561
02-06-5102	1561-1P561L
02-06-5108	1561-1P228
02-06-5109	1561-1P228L
02-06-5100	1561-1P550
02-06-5103	1561-1P550L
02-06-5105	1561-1P591
02-06-5104	1561-1P591L
02-06-1118	1561-11P901
NOT TOOLED	1561-11P901L



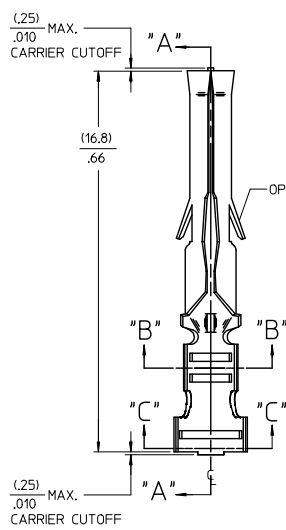
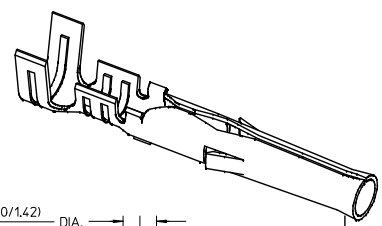
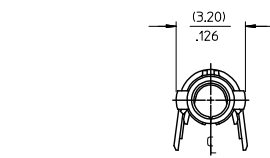
SECT. "B-B"  
SCALE:10X



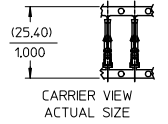
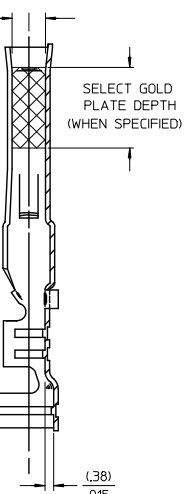
SECT. "C-C"  
SCALE:10X

LEGEND

1561-\*(\*\*\*)\*  
 BLANK=WITH LOCKING TABS  
 1=WITHOUT LOCKING TABS  
 P=PREPLATE  
 BLANK=POSTPLATE  
 FORM  
 BLANK=CHAIN  
 L=LOOSE  
 FINISH CODE



SECT. "A-A"



- NOTES:  
 1. MATERIAL: BRASS  
 2. FINISH:  
 901 HOT TIN DIP (.00051)/.000020 MIN.  
 228 SELECT GOLD PLATE (.00075)/.000030 MIN. IN CONTACT AREA, SELECT TIN (.00250)/.000100 MIN. IN CRIMP AREA OVER (.00125)/.000050 MIN. NICKEL OVERALL.  
 561 SELECT GOLD PLATE (.00076)/.000030 MIN. IN CONTACT AREA, OVER (.00127)/.000050 MIN. NICKEL OVERALL.  
 591 SELECT GOLD PLATE (.00175)/.000050 MIN. IN CONTACT AREA, OVER (.00127)/.000050 MIN. NICKEL OVERALL WITH (.000025)/.000010 MAX. GOLD FLASH OVERALL.  
 550 SELECT GOLD PLATE (.00038)/.000015 MIN. IN CONTACT AREA, OVER (.00076)/.000030 MIN. NICKEL OVERALL WITH (.000025)/.000010 MAX. GOLD FLASH OVERALL.  
 3. PRODUCT SPECIFICATION: PS-02-06.  
 4. PACKAGING INFORMATION: NOT AVAILABLE  
 5. TERMINAL FOR USE WITH (1.57)/.062 DIA. SERIES HOUSINGS AND WILL ACCEPT 18 THRU 24 AWG WIRE WITH (1.52/3.05)/.060/.120 INSULATION DIA.  
 6. PARTS CONFORM TO CLASS B REQUIREMENTS OF COSMETIC SPECIFICATION PS-45499-002.

CORRECT TOLERANCE EC NO: UCP2015-0937 DRAWN BY: CHENKUN CHKD BY: CHENKUN APPROVED BY: CHENKUN DATE: 2014/09/02 2014/09/02 2014/09/04	QUALITY SYMBOLS ▽=0 ▽=0 ▽=0	GENERAL TOLERANCES (UNLESS SPECIFIED)		DIMENSION STYLE		SCALE	DESIGN UNITS	THIRD ANGLE PROJECTION
				MM/IN		6:1	INCH	
		4 PLACES ± --- ± ---	DRAWN BY	DATE	TITLE			
		3 PLACES ± --- ± .010	GEW	1991/02/19	CRIMP TERMINAL, FEMALE .062 DIA. FOR 18-24 AWG WIRE			
2 PLACES ± 0.25 ± .014	CHECKED BY	DATE	molex					
1 PLACE ± 0.36 ± ---	RW	1991/02/19						
0 PLACE ± ±	APPROVED BY	DATE	MATERIAL NO.		DOCUMENT NO.	SHEET NO.		
	GEW	1991/02/19	SEE CHART		SD-1561-*	1 OF 1		
ANGULAR ±1/2°		THIS DRAWING CONTAINS INFORMATION THAT IS PROPRIETARY TO MOLEX INCORPORATED AND SHOULD NOT BE USED WITHOUT WRITTEN PERMISSION						
DRAFT WHERE APPLICABLE MUST REMAIN WITHIN DIMENSIONS								