



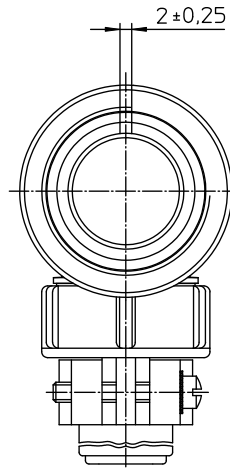
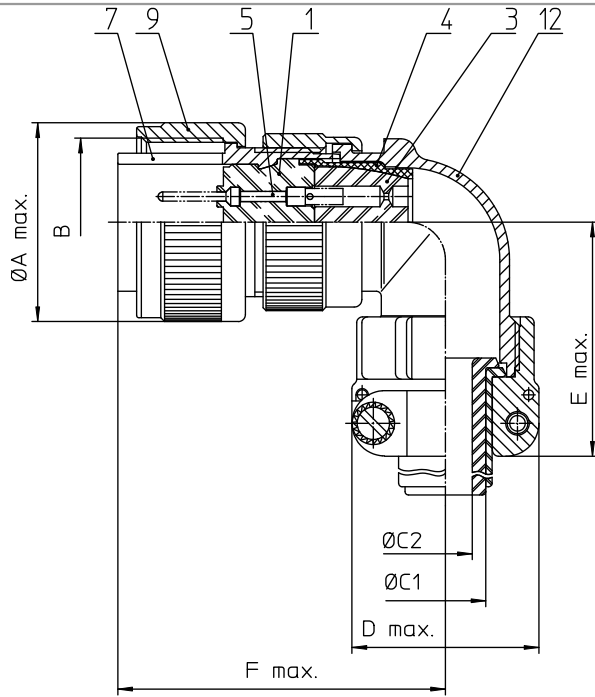
Excellent Integrated System Limited

Stocking Distributor

Click to view price, real time Inventory, Delivery & Lifecycle Information:

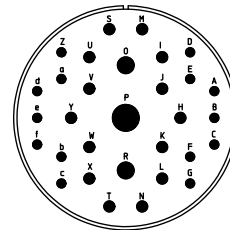
[ITT Cannon, LLC](#)
[CA3108E36-9PF80](#)

For any questions, you can email us directly:
sales@integrated-circuit.com



NO.	MASSE / DIMENSION
A	62.8
B	2 1/4-16UN-2B
C1	31.8
C2	26.8
D	58
E	69
F	75

NO.	BESCHREIBUNG / DESCRIPTION
1	ISOLIERKÖRPER STIFT / INSULATOR PIN
3	DICHTKÖRPER / GROMMET
4	ENDRING / ENDRING
5	KONTAKTSTIFT/ CONTACT PIN
7	ZYLINDERGHÄUSE / BARREL
9	ÜBERWURFMUTTER / COUPLING NUT
12	ENDGEHÄUSE / ENDBELL



L-3609-P

<p>Note: Due to an automatic nomenclature system, numbers generated may not be sequential.</p> <p>Specification and Dimensions subject to change. Drawings illustrate normal insulator positioning.</p>	
<p>Material Specification:</p> <p>Shell Material: Aluminum alloy</p> <p>Shell Plating: Olive drab chromate coating over cadmium plating</p> <p>Insulator Material: Neoprene</p> <p>Contact Material: Copper alloy</p> <p>Contact Plating: Hard silver</p>	

<p>all dimensions are in mm</p> <p>Dimensions without tolerance indications are general tolerances in acc. with DIN7180</p>		<p>drawing for CUSTOMER</p>
<p>ITT Engineered for life ITT Cannon Group 11100000000000000000</p>	<p>description CA3108E36-9P-F80 Plug 90° Endbell with clamp and bushing AWG Crimp / Pin / Layout: 36-9</p>	<p>© All rights reserved. Reproduction or use in any form without the prior written authorization of ITT Cannon.</p> <p>page 1/1</p> <p>revision 377.3 Jul 16</p>