

Excellent Integrated System Limited

Stocking Distributor

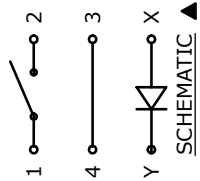
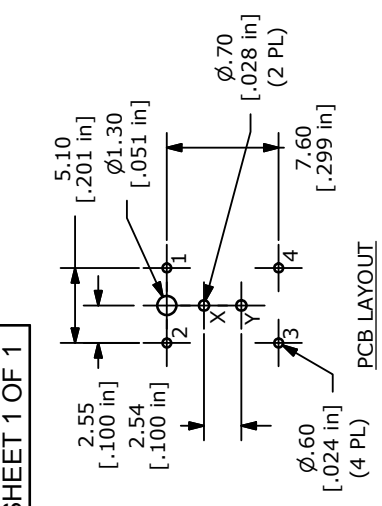
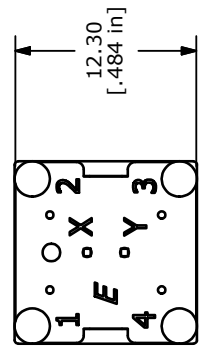
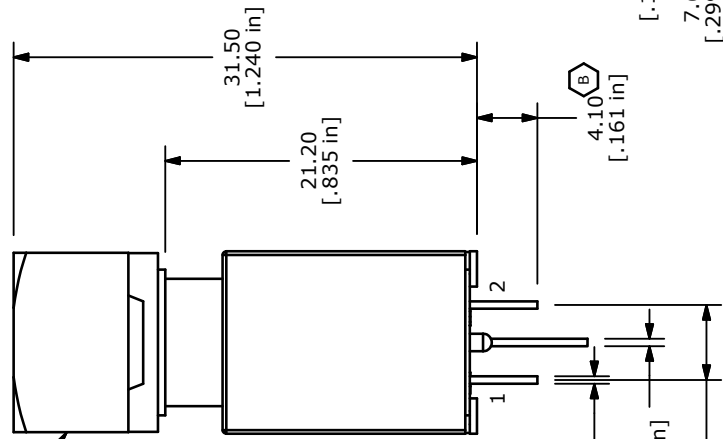
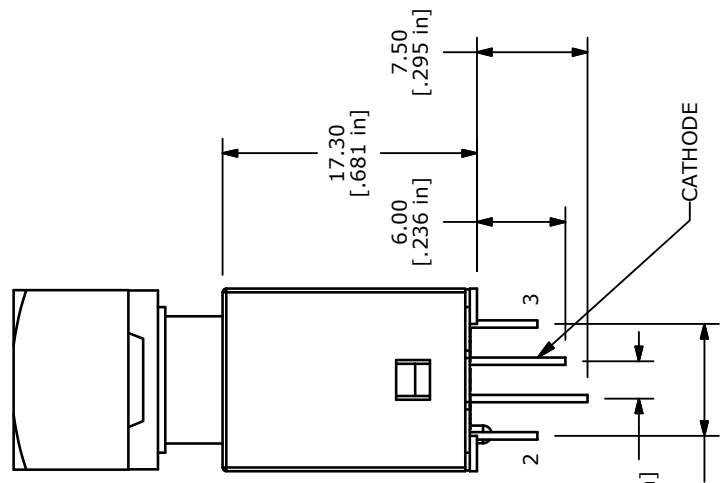
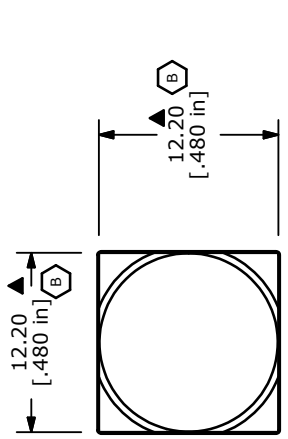
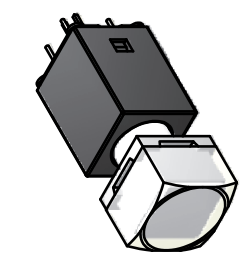
Click to view price, real time Inventory, Delivery & Lifecycle Information:

[E-Switch](#)
[LP16OA1ASTWR](#)

For any questions, you can email us directly:

sales@integrated-circuit.com

SHEET 1 OF 1



- NOTES:
1. ALL DIMENSIONS IN MM [INCH]
 2. GENERAL TOLERANCE: X.X±0.4
X.XX±0.25
 3. TERM. NOS. FOR REFERENCE ONLY.
 4. RATING: 20VDC, 100mA MAX; SPST
 5. CONTACT RESISTANCE: 150 MILLI-OHM MAX.
 6. INSULATION RESISTANCE: 10MEGA-OHM MIN @500VDC.
 7. DIELECTRIC STRENGTH: 500VAC FOR 1 MINUTE
 8. OPERATING FORCE: 250±X50GF
 9. OPERATING LIFE: 50,000,000 CYCLES
 10. OPERATING TEMP: -5°C TO +60°C
 11. STORAGE TEMPERATURE: -40°C TO +90°C
 12. TOTAL TRAVEL: 3.30mm±0.3
 - ▲13. TRAVEL TO ELECTRICAL MAKE: 2.9 ±0.5MM
 - ▲14. LED COLOR: RED
 15. 2002/95/EC (ROHS) COMPLIANT
 16. ▲DENOTES CRITICAL PARAMETER.

| ▲ LED SPECS | UNITS | RED |
|---------------------------|-------|------------------|
| FORWARD CURRENT | mA | 20 |
| FORWARD VOLTAGE @20mA | V | 1.95 Typ-2.5 Max |
| LUMINOUS INTENSITY @ 10mA | mcd | 280 Typ |



TITLE LP160A1ASTWR

| | | | | |
|-----|--------|-----------------------------|---------|-----|
| B | 19592 | CHANGE DIMS: was 4.2 & 12.4 | 1/17/11 | BGL |
| A | 19259 | New Release | 8/20/10 | rc |
| REV | PCR NO | DESCRIPTION | DATE | BY |

THE INFORMATION CONTAINED IN THIS DOCUMENT IS PROPRIETARY TO E-SWITCH AND IS NOT TO BE COPIED OR TRANSFERRED

| | | | | | | | | | |
|-------|-----|------|-----------|----|----|-----|---------|-----|---|
| SCALE | 2:1 | DATE | 7/29/2010 | DR | rc | DWG | B160001 | REV | B |
|-------|-----|------|-----------|----|----|-----|---------|-----|---|