

Excellent Integrated System Limited

Stocking Distributor

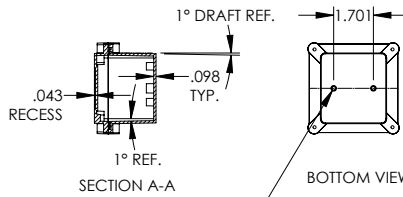
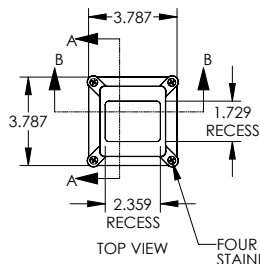
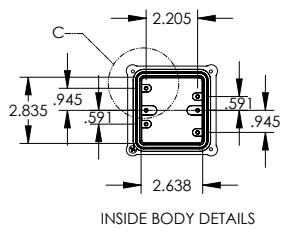
Click to view price, real time Inventory, Delivery & Lifecycle Information:

[BUD Industries, Inc.](#)
[IPS-3903](#)

For any questions, you can email us directly:

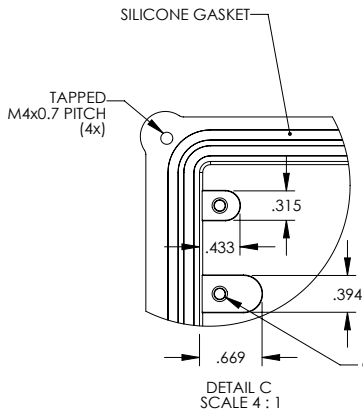
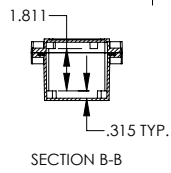
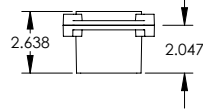
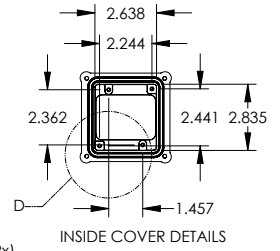
sales@integrated-circuit.com

PART NAME	IP67 SERIES NEMA DIE CAST ALUMINUM BOX	PART No.	IPS-3903	REVISION DATE	1/21/2011
-----------	--	----------	----------	---------------	-----------

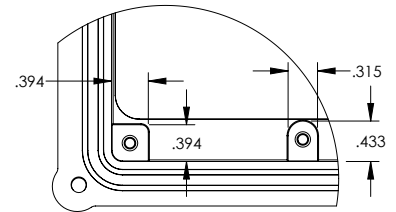
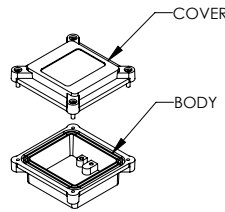


BOTTOM VIEW

Ø .176 x .315 DEEP BLIND HOLE (2x)
 {ACCEPTS M5 x 10mm (.394") LG. SELF-TAPPING SCREWS (NOT SUPPLIED)}



Ø .125 x .315 DEEP BLIND HOLE
 (6x) IN BODY
 (4x) IN COVER
 {ACCEPTS M3.5 x 6mm (.236") LG. SELF-TAPPING SCREWS (NOT SUPPLIED)}



MEETS NEMA 1, 2, 4, 4X, 12, 13 AND IP67 RATINGS
 MATERIAL - ALUMINUM ALLOY ADC-12
 FINISH - NATURAL
 TOLERANCES: ALL HOLE DIAMETERS ±.005
 ALL OTHER DIMENSIONS ±.015