

Excellent Integrated System Limited

Stocking Distributor

Click to view price, real time Inventory, Delivery & Lifecycle Information:

[Phoenix Contact](#)
[3003758](#)

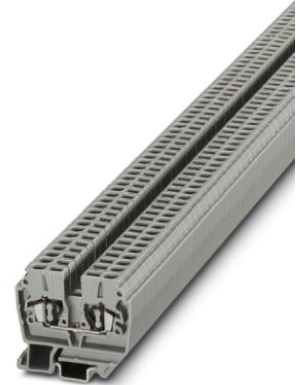
For any questions, you can email us directly:
sales@integrated-circuit.com



Extract from the online catalog


MZFK 1,5

Order No.: 3003758



<http://eshop.phoenixcontact.de/phoenix/treeViewClick.do?UID=3003758>

Feed-through modular terminal block, Type of connection: Spring-cage connection, Cross section: 0.14 mm² - 2.5 mm², AWG 26 - 14, Width: 5.2 mm, Color: gray, Mounting type: NS 15

Commercial data	
GTIN (EAN)	 4 017918 107055
sales group	A610
Pack	50 pcs.
Customs tariff	85369010
Catalog page information	Page 142 (CL-2007)

Product notes

WEEE/RoHS-compliant since:
01/01/2003



<http://www.download.phoenixcontact.com>
Please note that the data given here has been taken from the online catalog. For comprehensive information and data, please refer to the user documentation. The General Terms and Conditions of Use apply to Internet downloads.

Technical data

General	
Number of levels	1
Number of connections	2
Color	gray
Insulating material	PA

MZFK 1,5 Order No.: 3003758

<http://eshop.phoenixcontact.de/phoenix/treeViewClick.do?UID=3003758>

Inflammability class acc. to UL 94	V0
------------------------------------	----

Dimensions

Width	5.2 mm
Length	40 mm

Technical data

Maximum load current	24 A (with 2.5 mm ² conductor connection cross section)
Rated surge voltage	8 kV
Pollution degree	3
Surge voltage category	III
Insulating material group	I
Connection in acc. with standard	IEC 60947-7-1
Nominal current I _N	24 A
Nominal voltage U _N	800 V
Open side panel	ja

Connection data

Conductor cross section solid min.	0.14 mm ²
Conductor cross section solid max.	2.5 mm ²
Conductor cross section stranded min.	0.14 mm ²
Conductor cross section stranded max.	1.5 mm ²
Conductor cross section AWG/kcmil min.	26
Conductor cross section AWG/kcmil max	14
Conductor cross section stranded, with ferrule without plastic sleeve min.	0.14 mm ²
Conductor cross section stranded, with ferrule without plastic sleeve max.	1.5 mm ²
Conductor cross section stranded, with ferrule with plastic sleeve min.	0.14 mm ²
Conductor cross section stranded, with ferrule with plastic sleeve max.	1.5 mm ²
Type of connection	Spring-cage connection
Stripping length	9 mm
Internal cylindrical gage	A1

MZFK 1,5 Order No.: 3003758

<http://eshop.phoenixcontact.de/phoenix/treeViewClick.do?UID=3003758>

Certificates / Approvals



Certification

CUL, UL

Accessories

Item	Designation	Description
Assembly		
3024164	D-MZFK 1,5	End cover, Length: 40 mm, Width: 1.1 mm, Color: gray
1401637	E/MBK	End clamp, width: 6.2 mm, color: gray
1401763	NS 15 AL PERF 2000MM	DIN rail, material: Aluminum, perforated, height 5.5 mm, width 15 mm, length: 2 m
1401682	NS 15 PERF 2000MM	DIN rail, material: steel, perforated, height 5.5 mm, width 15 mm, length: 2 m
1401695	NS 15 UNPERF 2000MM	DIN rail, material: Steel, unperforated, height 5.5 mm, width 15 mm, length: 2 m
2770215	TS-KK 3	Separating plate, Length: 16 mm, Height: 14 mm, Color: gray

Bridges

3000227	FBRI 2-5 N	Fixed bridge, Number of positions: 2, Color: silver
3000201	FBRI 3-5 N	Fixed bridge, Number of positions: 3, Color: silver
2770642	FBRI 10-5 N	Fixed bridge, Number of positions: 10, Color: silver
3000434	FBRI 12-5 N	Fixed bridge, Number of positions: 12, Color: aluminum
3000476	FBRI 16-5 N	Fixed bridge, Number of positions: 16, Color: aluminum
3000515	FBRI 20-5 N	Fixed bridge, Number of positions: 20, Color: aluminum
3006823	FBRI 40-5 N	Fixed bridge, Number of positions: 40, Color: aluminum
3025066	FBST 2-5	Plug-in bridge, Number of positions: 2, Color: red
3025079	FBST 3-5	Plug-in bridge, Number of positions: 3, Color: red
3025147	FBST 10-5	Plug-in bridge, Number of positions: 10, Color: gray

Marking

0803647	ZBFM 5:SO/CMS	Special printing, Zack marker sheet, flat, 120-section, divisible, marking according to customer requirements
---------	---------------	---

MZFK 1,5 Order No.: 3003758

<http://eshop.phoenixcontact.de/phoenix/treeViewClick.do?UID=3003758>

Plug/Adapter

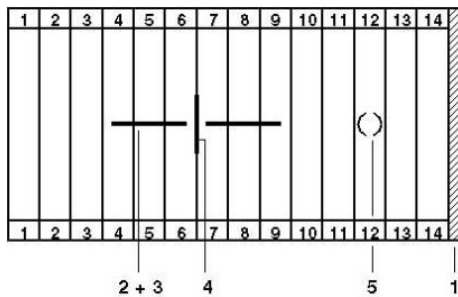
0601292	PSB 3/10/4	Female test connector, Color: silver
---------	------------	--------------------------------------

Tools

1204517	SZF 1-0,6X3,5	Actuation tool, for ST terminal blocks, also suitable for use as a bladed screwdriver, size: 0.6 x 3.5 x 100 mm, 2-component grip, with non-slip grip
---------	---------------	---

Diagrams/Drawings

Circuit diagram



- 1 = cover
- 2 = fixed bridge
- 3 = plug-in bridge
- 4 = separating plate
- 5 = test plug socket

MZFK 1,5 Order No.: 3003758

<http://eshop.phoenixcontact.de/phoenix/treeViewClick.do?UID=3003758>

Address

PHOENIX CONTACT Deutschland GmbH
Flachsmarktstr. 8
32825 Blomberg, Germany
Phone +49 5235 3 12000
Fax +49 5235 3 41200
<http://www.phoenixcontact.de>



© 2010 Phoenix Contact
Technical modifications reserved;