

Excellent Integrated System Limited

Stocking Distributor

Click to view price, real time Inventory, Delivery & Lifecycle Information:

[Phoenix Contact](#)
[2278513](#)

For any questions, you can email us directly:

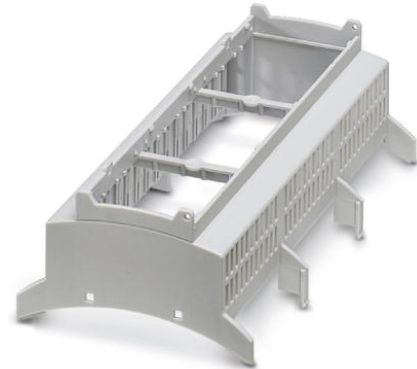
sales@integrated-circuit.com



Extract from the online catalog


BC 161,6 OT U11 KMGY

Order No.: 2278513



<http://eshop.phoenixcontact.de/phoenix/treeViewClick.do?UID=2278513>

Upper part for installation housing BC, width: 161.6 mm, wiring space depth: 11 mm

Commercial data	
GTIN (EAN)	 4 046356 299480
sales group	F060
Pack	10 pcs.
Customs tariff	85472000
Catalog page information	Page 556 (CC-2009)

Product notes

WEEE/RoHS-compliant since:
06/04/2008



<http://www.download.phoenixcontact.com>
 Please note that the data given here has been taken from the online catalog. For comprehensive information and data, please refer to the user documentation. The General Terms and Conditions of Use apply to Internet downloads.

Technical data

General	
Housing type	Upper part
Housing material	polycarbonate
Color	light gray

BC 161,6 OT U11 KMGY Order No.: 2278513
<http://eshop.phoenixcontact.de/phoenix/treeViewClick.do?UID=2278513>

Dimensions / positions

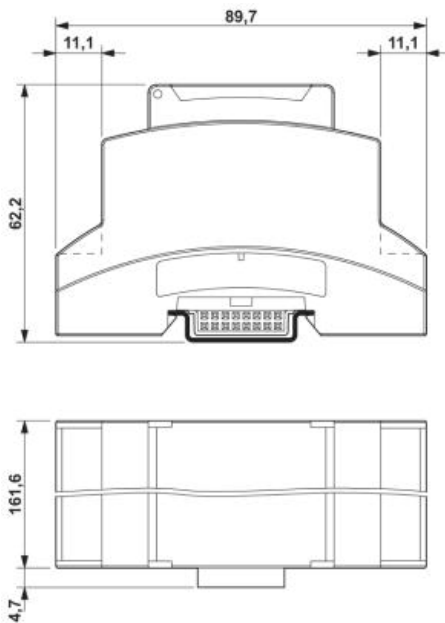
Length	89.7 mm
Constructional height	62.2 mm
Width	161.6 mm

Technical data

Inflammability class acc. to UL 94	V0
------------------------------------	----

Diagrams/Drawings

Dimensioned drawing



The dimensional drawing shows the item with the lower part of the housing and the housing cover

BC 161,6 OT U11 KMGY Order No.: 2278513

<http://eshop.phoenixcontact.de/phoenix/treeViewClick.do?UID=2278513>

Address

PHOENIX CONTACT Inc., USA
586 Fulling Mill Road
Middletown, PA 17057, USA
Phone (800) 888-7388
Fax (717) 944-1625
<http://www.phoenixcon.com>



© 2010 Phoenix Contact
Technical modifications reserved;