

Excellent Integrated System Limited

Stocking Distributor

Click to view price, real time Inventory, Delivery & Lifecycle Information:

[Phoenix Contact](#)
[2802552](#)

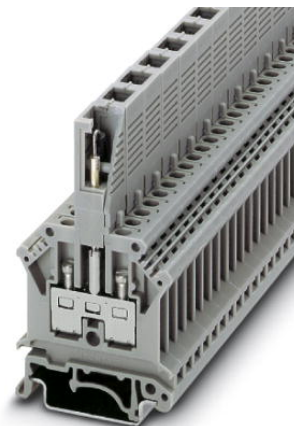
For any questions, you can email us directly:
sales@integrated-circuit.com



Extract from the online catalog

BES 6-1N4007

Order No.: 2802552



<http://eshop.phoenixcontact.de/phoenix/treeViewClick.do?UID=2802552>

Component connector, Color: gray, Assembly: NS 35/7.5, NS 35/15, NS 32

Commercial data

GTIN (EAN)	
sales group	A911
Pack	10 pcs.
Customs tariff	85366990
Catalog page information	Page 389 (CL-2009)

Product notes

WEEE/RoHS-compliant since: 01/01/2006



<http://www.download.phoenixcontact.com>
Please note that the data given here has been taken from the online catalog. For comprehensive information and data, please refer to the user documentation. The General Terms and Conditions of Use apply to Internet downloads.

Certificates / Approvals



Certification

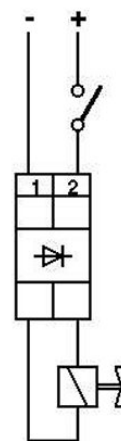
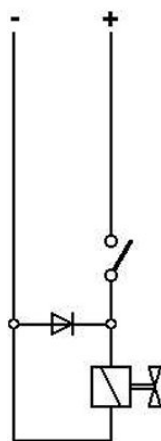
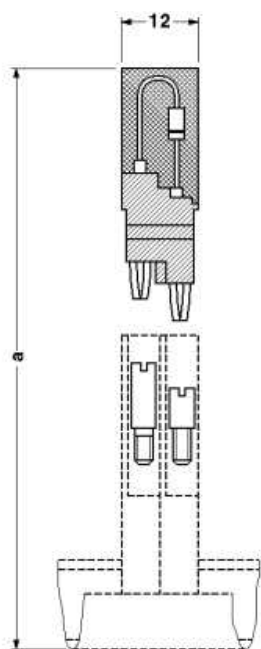
GOST

BES 6-1N4007 Order No.: 2802552

<http://eshop.phoenixcontact.de/phoenix/treeViewClick.do?UID=2802552>

Diagrams/Drawings

Circuit diagram



BES 6-1N4007 Order No.: 2802552
<http://eshop.phoenixcontact.de/phoenix/treeViewClick.do?UID=2802552>

Address

PHOENIX CONTACT Inc., USA
586 Fulling Mill Road
Middletown, PA 17057, USA
Phone (800) 888-7388
Fax (717) 944-1625
<http://www.phoenixcon.com>



© 2010 Phoenix Contact
Technical modifications reserved;