

## Excellent Integrated System Limited

Stocking Distributor

Click to view price, real time Inventory, Delivery & Lifecycle Information:

[Phoenix Contact](#)  
[1605572](#)

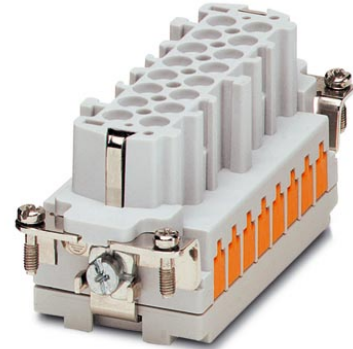
For any questions, you can email us directly:  
[sales@integrated-circuit.com](mailto:sales@integrated-circuit.com)



Extract from the online catalog


## HC-B 16-EBUQ-2,5

Order No.: 1605572



<http://eshop.phoenixcontact.de/phoenix/treeViewClick.do?UID=1605572>

HEAVYCON female insert, B16 series, 16-pos., QUICKON-connection

| Commercial data          |  |
|--------------------------|--|
| GTIN (EAN)               | <br>4 017918 940669 |
| sales group              | D000   |
| Pack                     | 10 pcs.  |
| Customs tariff           | 85369010   |
| Catalog page information | Page 431 (PC-2009)   |

### Product notes

WEEE/RoHS-compliant since:  
12/01/2005



<http://www.download.phoenixcontact.com>  
 Please note that the data given here has been taken from the online catalog. For comprehensive information and data, please refer to the user documentation. The General Terms and Conditions of Use apply to Internet downloads.

### Product description

With the QUICKON connection method, the wires are connected with a simple levering action of the screwdriver. The wire does not need to be stripped before connection! This saves at least 60% connection time!

HC-B 16-EBUQ-2,5 Order No.: 1605572

<http://eshop.phoenixcontact.de/phoenix/treeViewClick.do?UID=1605572>
**Technical data**
**General data**

|   |   |
|---|---|
| Note  | For HEAVYCON ADVANCE and HEAVYCON housing of B16 type. Coding using the CP-HC (1686478) keying profile. HC-B6.../ HC-B10... for two keying profiles. HC-B16.../ HC-B24... for 4 keying profiles. Connectors may be operated only when there is no load/voltage. |
| Connection method   | QUICKON connection  |
| Ambient temperature (operation)                                       | -40 °C ... 125 °C (including heating up of contacts)  |
| Ambient temperature (assembly)  | -25 °C ... 50 °C  |
| Pollution degree  | 3   |
| Surge voltage category  | III   |
| Number of positions   | 16  |
| Insertion/withdrawal cycles   | ≥ 500   |
| Design  | B16   |
| Conductor cross-section   | 0.34 mm <sup>2</sup> ... 2.5 mm <sup>2</sup>  |
| Connection cross-section AWG  | 22 ... 14   |
| Wire diameter including insulation                                    | 1 mm ... 3.5 mm   |
| Frequency of connections between conductors of the same cross section | 10  |
| Assembly instructions   | If the conductor is to be reconnected, it must be cut off above the last contact point.   |
| Connection  | For housings of type B16/B32. Connectors may only be actuated when there is no load/voltage.  |

**Material data**

|                                    |              |
|------------------------------------|--------------|
| Inflammability class acc. to UL 94 | V0           |
| Contact material                   | Copper alloy |
| Contact surface material           | Ag           |
| Contact carrier material           | PA           |
| Material wire insulation           | PVC / PE     |

**Electrical characteristics**

|                       |       |
|-----------------------|-------|
| Rated voltage (III/3) | 400 V |
| Rated surge voltage   | 6 kV  |
| Rated current         | 16 A  |

HC-B 16-EBUQ-2,5 Order No.: 1605572  
<http://eshop.phoenixcontact.de/phoenix/treeViewClick.do?UID=1605572>

**Certificates / Approvals**



Certification CSA, CUL, UL

**Accessories**

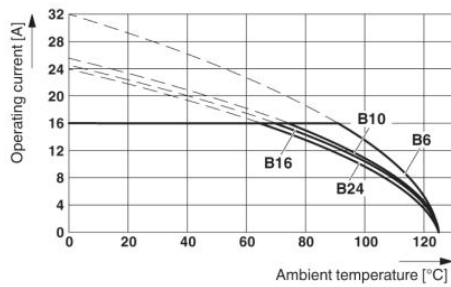
| Item                | Designation | Description   |
|---------------------|-------------|---|
| <b>General</b>      |             |   |
| 1644326             | HC-B-3PE    | PE multiplier, for three PE connections, for HC-B (besides HC-B..E..ZZ) / HC-BB / HC-DD / HC-D40 / HC-D64 contact inserts |
| 1604997             | HC-B-PES    | PE screw, for contact inserts HC-B / HC-BB / HC-DD / HC-D40 / HC-D64  |
| 1685327             | HC-B-ZG     | Strain relief clamps contact inserts of series: B-, BB-, D 40, D 64, DD and HV, straight cable exit                       |
| 1685330             | HC-B-ZS     | Strain relief clamps contact inserts of series: B-, BB-, D 40, D 64, DD and HV, lateral cable exit                        |
| 1772722             | HC-CB       | Coding pin, prevents mismating of up to six plug connectors with an identical number of positions                         |
| 1676860             | HC-CBU      | Keying socket for coding up to 16 plug connectors   |
| 1676857             | HC-CST      | Keying peg for coding up to 16 plug connectors  |
| 1687972             | HC-SMR-B16  | HEAVYCON connector assembly frame, for contact inserts of type B16  |
| <b>Plug/Adapter</b> |             |   |
| 1686478             | CP-HC       | Keying profile, 4-section, for pushing into the keying grooves  |

HC-B 16-EBUQ-2,5 Order No.: 1605572

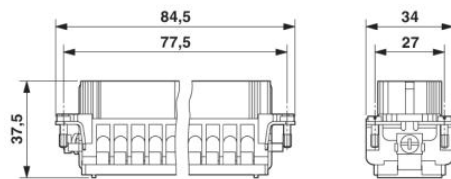
<http://eshop.phoenixcontact.de/phoenix/treeViewClick.do?UID=1605572>

**Diagrams/Drawings**

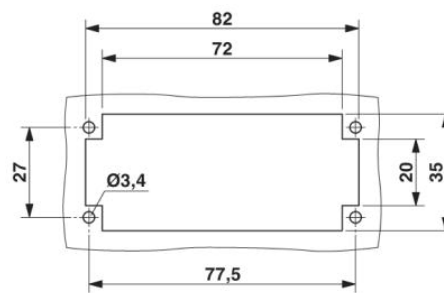
Diagram



Dimensioned drawing



Female insert



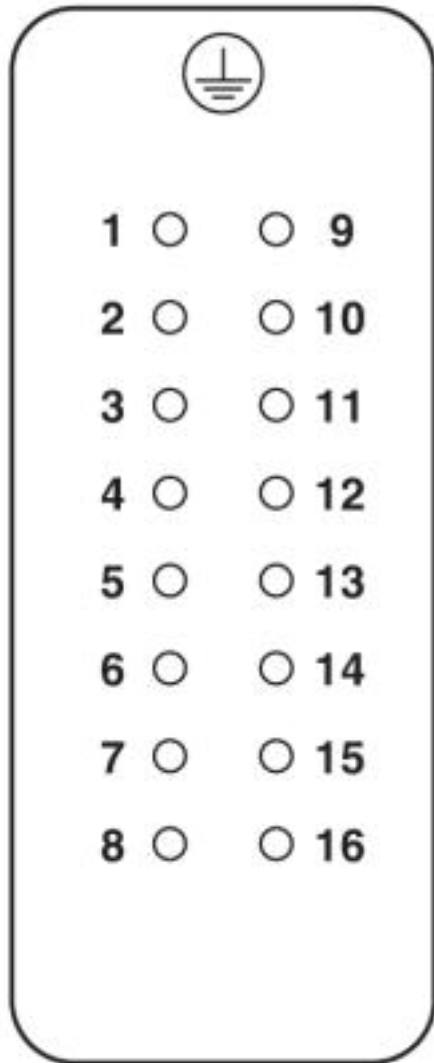
Panel cutout

HC-B 16-EBUQ-2,5 Order No.: 1605572

<http://eshop.phoenixcontact.de/phoenix/treeViewClick.do?UID=1605572>

Schematic diagram

Connector pin assignment, connection side



HC-B 16-EBUQ-2,5 Order No.: 1605572

<http://eshop.phoenixcontact.de/phoenix/treeViewClick.do?UID=1605572>

---

**Address**

PHOENIX CONTACT Deutschland GmbH  
Flachsmarktstr. 8  
32825 Blomberg, Germany  
Phone +49 5235 3 12000  
Fax +49 5235 3 41200  
<http://www.phoenixcontact.de>



© 2010 Phoenix Contact  
Technical modifications reserved;