

Excellent Integrated System Limited

Stocking Distributor

Click to view price, real time Inventory, Delivery & Lifecycle Information:

[Phoenix Contact](#)
[1772395](#)

For any questions, you can email us directly:

sales@integrated-circuit.com



Extract from the online catalog

HC-D 15-SML-52/M2PG16


Order No.: 1772395

The illustration shows version, HC-D 15-SML-52/M 1 PG 16



<http://eshop.phoenixcontact.de/phoenix/treeViewClick.do?UID=1772395>

Box mounting base, with single locking latch, height 52 mm, with screw connection, 2x Pg16

Commercial data	
GTIN (EAN)	4 017918 037062 
Note	Made-to-order
sales group	D011
Pack	10 pcs.
Customs tariff	85389099
Catalog page information	Page 511 (PC-2009)

Product notes

WEEE/RoHS-compliant since:
03/01/2006



<http://www.download.phoenixcontact.com>
 Please note that the data given here has been taken from the online catalog. For comprehensive information and data, please refer to the user documentation. The General Terms and Conditions of Use apply to Internet downloads.

Technical data

General data	
Note	For contact inserts HC-D15, A10
Design	D15

HC-D 15-SML-52/M2PG16 Order No.: 1772395

<http://eshop.phoenixcontact.de/phoenix/treeViewClick.do?UID=1772395>

Height	52 mm
Width	50 mm
Length	93 mm
Housing type	Box mounting bases
Locking type	With single locking latch
Type of the screw connection	2x Pg16
Pg screw connection	With
Wrench size, union nut	22 mm
External cable diameter	7.5 mm ... 15 mm
Degree of protection	IP65
Ambient temperature (operation)	-40 °C ... 125 °C
Housing material	Aluminum, die-cast
Housing surface material	Powder-coated, gray
Cable gland material	Nickel-plated brass
Cable seal material	NBR
Material lock	Steel, galvanized

Certificates / Approvals

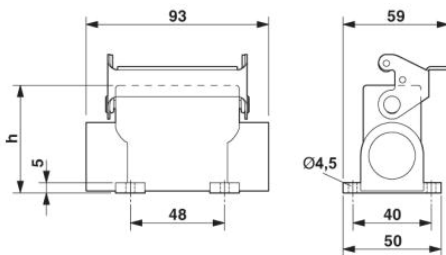


Certification

GOST

Diagrams/Drawings

Dimensioned drawing



HC-D 15-SML-52/M2PG16 Order No.: 1772395

<http://eshop.phoenixcontact.de/phoenix/treeViewClick.do?UID=1772395>

Address

PHOENIX CONTACT Inc., USA
586 Fulling Mill Road
Middletown, PA 17057, USA
Phone (800) 888-7388
Fax (717) 944-1625
<http://www.phoenixcon.com>



© 2010 Phoenix Contact
Technical modifications reserved;