

Excellent Integrated System Limited

Stocking Distributor

Click to view price, real time Inventory, Delivery & Lifecycle Information:

[Phoenix Contact](#)
[1674574](#)

For any questions, you can email us directly:

sales@integrated-circuit.com

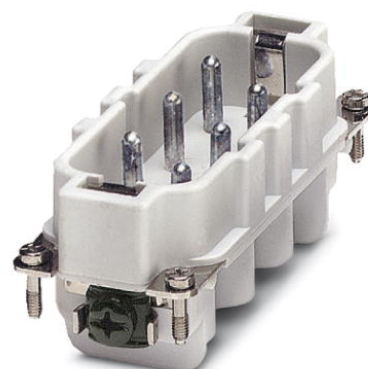


Extract from the online catalog

HC-HS 6-ESTS-12


Order No.: 1674574

The illustration shows version HC-HS 6-ESTS



<http://eshop.phoenixcontact.de/phoenix/treeViewClick.do?UID=1674574>

HEAVYCON male insert, HS6 series, screw connection, numbering from 7-12

Commercial data	
GTIN (EAN)	 4 017918 144685
sales group	D006
Pack	10 pcs.
Customs tariff	85366990
Catalog page information	Page 445 (PC-2009)

Product notes

WEEE/RoHS-compliant since:
02/24/2006



<http://www.download.phoenixcontact.com>
Please note that the data given here has been taken from the online catalog. For comprehensive information and data, please refer to the user documentation. The General Terms and Conditions of Use apply to Internet downloads.

Technical data

General data

Note	For HEAVYCON-ADVANCE housings of B16 type and HEAVYCON housings of B32 type
Connection method	Screw connection
Tightening torque	1.2 Nm
Ambient temperature (operation)	-40 °C ... 125 °C (including heating up of contacts)

HC-HS 6-ESTS-12 Order No.: 1674574

<http://eshop.phoenixcontact.de/phoenix/treeViewClick.do?UID=1674574>

Pollution degree	3
Surge voltage category	III
Constructional and testing regulations	DIN VDE 0627/86
	DIN VDE 0110/02.79
	DIN VDE 0110-1/04.97
	IEC 60664-1, DIN IEC 60512
Number of positions	6
Insertion/withdrawal cycles	≥ 500
Design	HS6
Connection in acc. with standard	IEC / EN
Conductor cross-section	0.5 mm ² ... 6 mm ²
Connection cross-section AWG	20 ... 10
Stripping length of the individual wire	10 mm
Assembly instructions	Connectors may be operated only when there is no load/voltage.

Material data

Inflammability class acc. to UL 94	V0
Contact material	Copper alloy
Contact surface material	Ag
Contact carrier material	PA

Electrical characteristics

Rated voltage (III/3)	500 V
Rated surge voltage	6 kV
Rated current	35 A

Certificates / Approvals



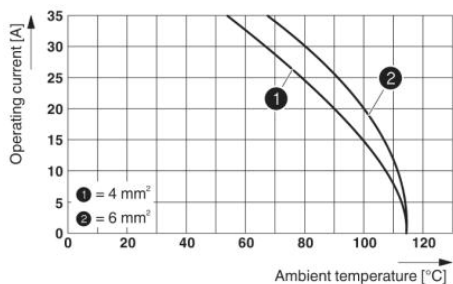
Certification

GOST

HC-HS 6-ESTS-12 Order No.: 1674574
<http://eshop.phoenixcontact.de/phoenix/treeViewClick.do?UID=1674574>

Diagrams/Drawings

Diagram

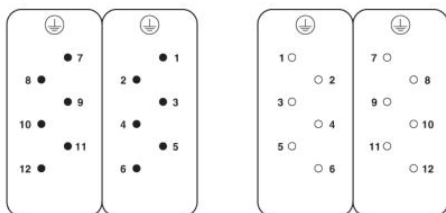


Derating diagram: HC-HS...S series

Dimensioned drawing

Male insert

Schematic diagram



HC-HS 6-ESTS-12 Order No.: 1674574

<http://eshop.phoenixcontact.de/phoenix/treeViewClick.do?UID=1674574>

Address

PHOENIX CONTACT Deutschland GmbH
Flachsmarktstr. 8
32825 Blomberg, Germany
Phone +49 5235 3 12000
Fax +49 5235 3 41200
<http://www.phoenixcontact.de>



© 2010 Phoenix Contact
Technical modifications reserved;